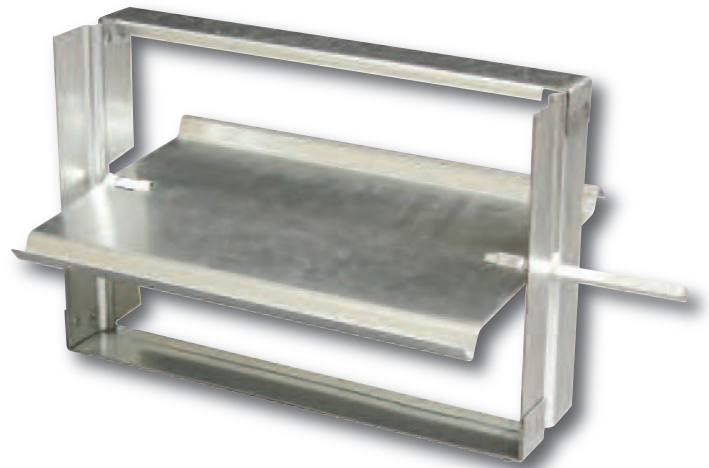


- FOR MANUAL BALANCING
- SINGLE BLADE
- GALVANIZED STEEL

Model:
1870 Single Blade



Model 1870

Model 1870 Manual Balancing Damper is a ruggedly built, economical branch duct balancing damper designed for manual balancing applications with rectangular ductwork. Model 1870 installs quickly and easily, becoming part of the ductwork saving time and money on installation costs. It offers an economical manufactured product alternative to custom 'shop built' dampers and meets the volume damper designs recommended by SMACNA. The low profile 18 ga. (1.3) frame and sills allow maximum free area and the ribbed forms in the blade and frame provides extra strength. A locking hand quadrant is provided with each damper for manual operation.

STANDARD CONSTRUCTION:

Frame: 3" wide x 18 ga. (76 wide x 1.3) galvanized steel.

Blades: 20 ga. (1.0) galvanized steel up to 24" x 12" (610 x 305).
 18 ga. (1.3) galvanized steel above 24" x 12" (610 x 305).

Shaft: 1/4" (6) square plated steel.

Quadrant: Plated steel with locking operator (shipped loose).

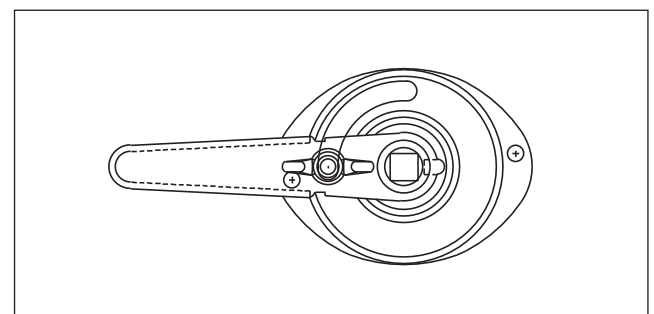
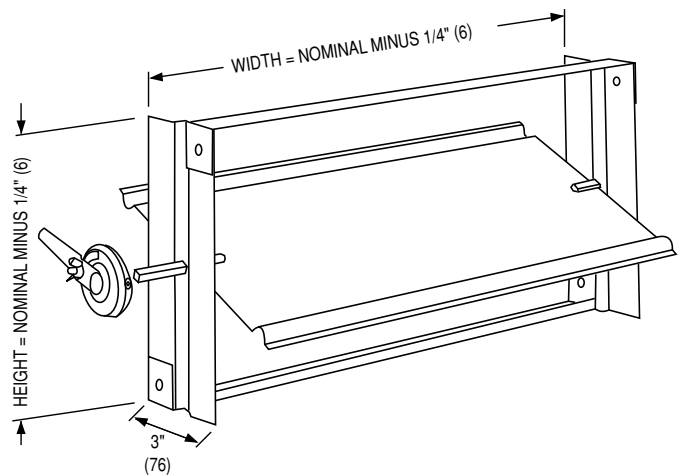
Model 1870 Sizes (Duct W x H):

| Minimum | Maximum |
|----------------------|------------------------|
| Single Section | Single Section |
| 4" x 4" (102 x 102). | 36" x 12" (914 x 305). |

Note: For larger sizes: refer to Models 1810 and 1820.

Temperature Range: -50°F to 180°F (-46°C to 82°C)

| 1870 Series - Maximum Performance Ratings | |
|---|---------------------|
| Maximum Velocity | 1500 fpm (7.6 m/s) |
| Maximum Pressure | 2 in. w.g. (500 Pa) |



LOCKING QUADRANT