

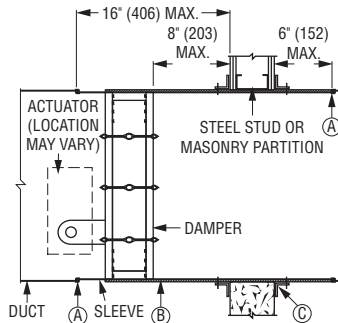
## TYPICAL INSTALLATION DETAILS:

### ITEMS:

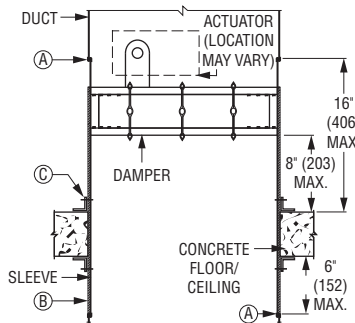
- A Duct/sleeve connection.
- B Intumescent material (insulation).
- C Retaining angles and fasteners.

### APPLICATION:

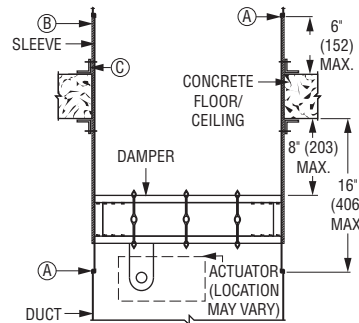
Model 1221-DOW fire/smoke damper is specially designed for "out of wall" (vertical mount) or "out of floor" (horizontal mount) through penetration applications (ductwork is connected to both sides) where the damper cannot be installed within the plane of the wall or floor.



**VERTICAL INSTALLATION**



**ABOVE FLOOR INSTALLATION**



**BELOW FLOOR INSTALLATION**

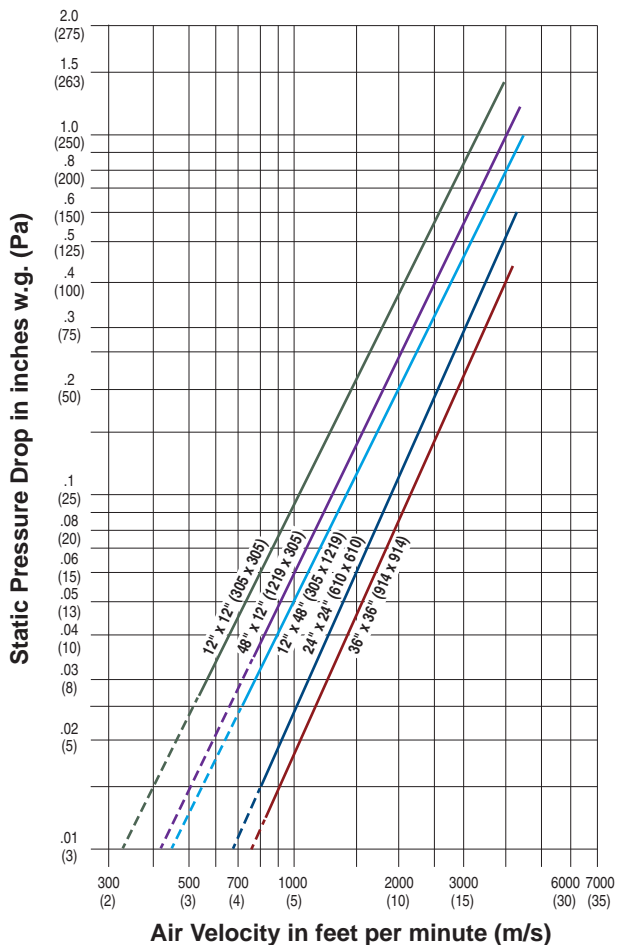
## PERFORMANCE DATA:

### MODEL SERIES: 1221-DOW - 1 1/2 HOUR LABEL

### LEAKAGE CLASS:

The 1221-DOW Series Out of Wall Combination Fire/Smoke Damper has been designed and qualified under UL 555S in order to provide maximum system design flexibility. They are available with a Class I leakage rating (currently the lowest available) with all damper/actuator assemblies having been tested successfully at an elevated temperature of 250°F (121°C) or 350°F (177°C), dependent on actuator, under airflow of 2000 fpm @ 4" w.g. (10 m/s @ 1 kPa). The 1221-DOW Series has also qualified under extended testing up to 4000 fpm (20 m/s) and 8 w.g. (2 kPa), with some size and actuator restrictions.

### PRESSURE DROP:



Pressure drop tested per AMCA Standard 500-D, Figure 5.3.  
Data corrected to standard air density of 0.075 lbs/ft.<sup>3</sup>.

1221-DOW Series - Maximum Performance Ratings	
UL 555 Fire Rating	1 1/2 Hour
UL 555S Leakage Rating	Class I
Maximum Velocity	4000 fpm (20 m/s)
Maximum Pressure	8 in. w.g. (2 kPa)
Maximum Temperature	350°F (177°C)