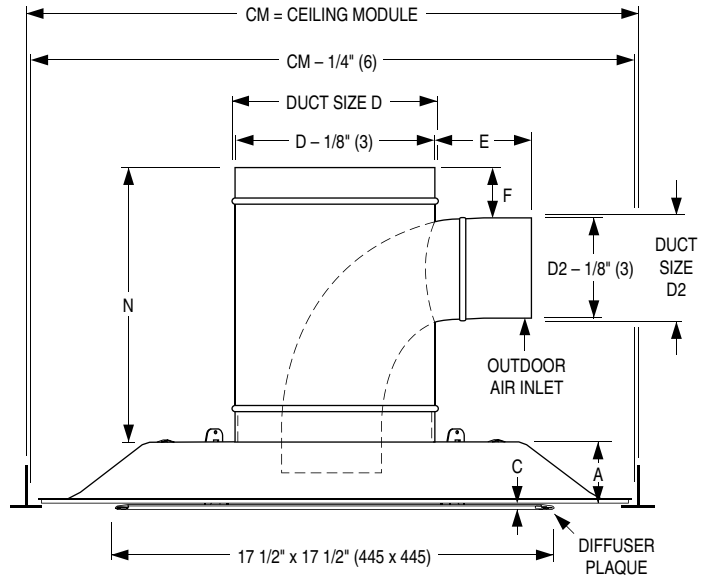
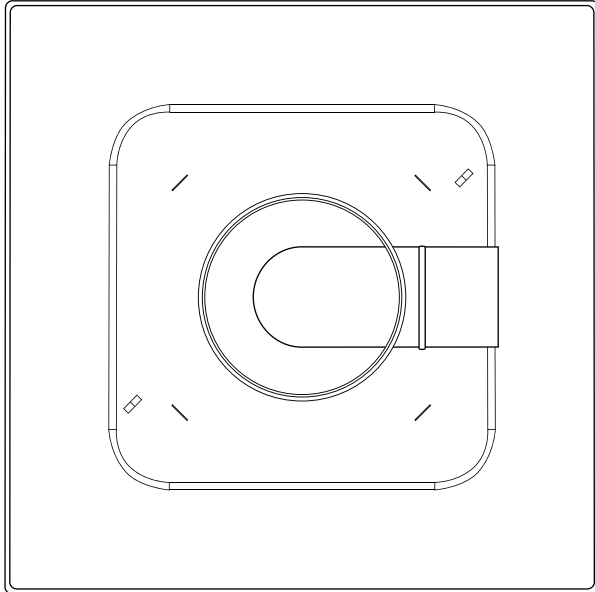


# ARCHITECTURAL DUAL INLET CEILING DIFFUSER CONDITIONED & VENTILATION AIR MIXING SQUARE PLAQUE • CORNER POSTS • ROUND NECK • STEEL MODEL: UNI2-DI

## ☐ TYPE L Lay-in T-Bar



## Dimensional Data

| Ceiling Module   |                | Imperial Units (inches) |                     |        |       |       |        |    |     |                   | Metric Units (mm)   |     |     |    |    |     |    |  |  |
|------------------|----------------|-------------------------|---------------------|--------|-------|-------|--------|----|-----|-------------------|---------------------|-----|-----|----|----|-----|----|--|--|
| Imperial Modules | Metric Modules | Cond. Duct Size D       | Vent. O. A. Duct D2 | N      | E     | F     | A      | B  | C   | Cond. Duct Size D | Vent. O. A. Duct D2 | N   | E   | F  | A  | B   | C  |  |  |
| 24 x 24          | 600 x 600      | 8                       | 4                   | 11     | 3 7/8 | 2     | 2 5/16 | 22 | 3/8 | 203               | 102                 | 279 | 98  | 51 | 59 | 559 | 10 |  |  |
|                  |                | 10                      |                     |        | 2 7/8 |       |        |    |     | 254               |                     |     | 73  |    |    |     |    |  |  |
|                  |                | 12                      | 6                   | 14 3/4 | 5 1/8 | 1 3/4 | 2 5/16 | 22 | 3/8 | 305               | 152                 | 375 | 130 | 44 | 59 | 559 | 10 |  |  |
|                  |                | 14                      |                     |        | 4 1/8 |       |        |    |     | 305               |                     |     | 105 |    |    |     |    |  |  |

## DESCRIPTION:

1. Material: Corrosion-resistant steel.
2. The UNI2-DI is a plaque diffuser that has two inlets. One from the main conditional air AHU and one from the Dedicated Outdoor Air System (DOAS). Utilizing the UNI2-DI within the entire space will allow for the required ventilation air and the conditioned air to be fully mixed and distributed evenly to all occupants.
3. The UNI2-DI is available with the following inlet size combinations.  
 Conditioned air inlet: 8" (203), 10" (254) with 4" (102) OAI  
 12" (305), 14" (356) with 6" (152) OAI
4. The UNI2-DI diffuser has been designed to provide both the unobtrusive appearance for architectural excellence and engineered performance.
5. The diffuser delivers a tight 360° radial horizontal pattern allowing high turn down ratios with no dumping.
6. The removable face panel is held in place by four hook corner posts that positively engage into slots in the backpan.
7. Standard finish is AW Appliance White.

## OPTIONS:

Conditioned Air Damper:

- ☐ 4250 Radial Sliding
- ☐ 4275 Radial Opposed
- ☐ 4675 Butterfly
- ☐ OAD Outdoor Air Balancing damper with hand locking quadrant.

QB Quadrant Blanks:

- ☐ QB3 3-Way Blow
- ☐ QC2 2-Way Corner Blow
- ☐ QB2 2-Way Opposite Blow
- ☐ QB1 1-Way Blow

Finish:

- ☐ SP Special. Specify \_\_\_\_\_.
- ☐ CVR Constant Volume Regulator (Order separately. Ships loose for field installation.)

Page 1 of 2

Dimensions are in inches (mm).

## SCHEDULE TYPE:

## PROJECT:

## ENGINEER:

## CONTRACTOR:

DATE

B SERIES

SUPERSEDES

DRAWING NO.

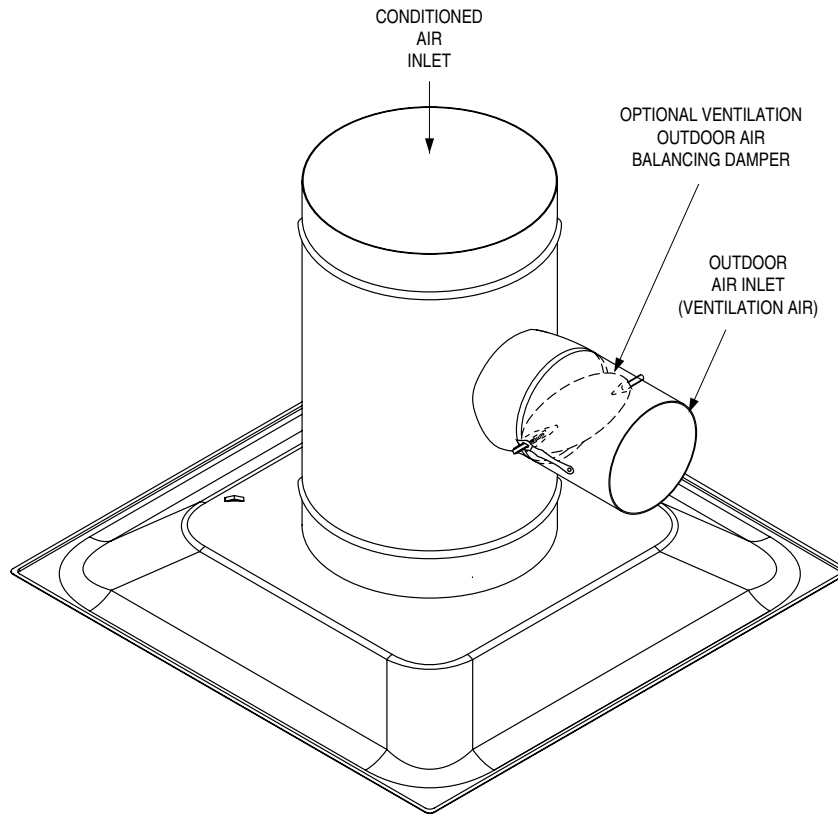
9 - 9 - 25

UNI

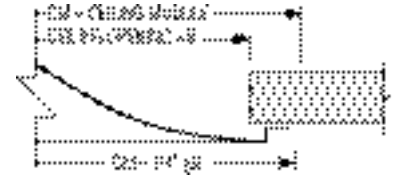
11 - 3 - 23

UNI2-DI

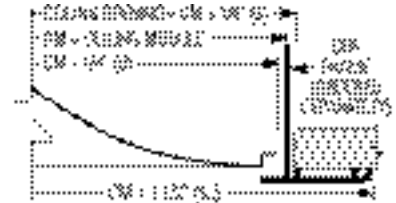
# ARCHITECTURAL DUAL INLET CEILING DIFFUSER CONDITIONED & VENTILATION AIR MIXING SQUARE PLAQUE • CORNER POSTS • ROUND NECK • STEEL MODEL: UNI2-DI



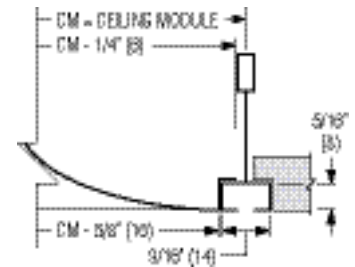
☐ **TYPE L Surface Mount**  
 Hard duct connection recommended.



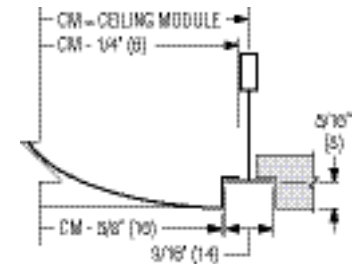
☐ **TYPE L Surface Mount With DFA**  
 Drywall/Plaster frame. Recommended for flexible duct connection and ceiling access.



☐ **TYPE F Fineline® 9/16\" Bolt Slot T-Bar**



☐ **TYPE F Fineline® 9/16\" Tegular T-Bar**



Fineline® is a registered trademark of USG Interiors Inc.

Page 2 of 2  
 Dimensions are in inches (mm).

|                       |  |             |                 |                    |
|-----------------------|--|-------------|-----------------|--------------------|
| <b>SCHEDULE TYPE:</b> |  |             |                 |                    |
| <b>PROJECT:</b>       |  |             |                 |                    |
| <b>ENGINEER:</b>      |  | <b>DATE</b> | <b>B SERIES</b> | <b>SUPERSEDES</b>  |
| <b>CONTRACTOR:</b>    |  | 9 - 9 - 25  | UNI             | 11 - 3 - 23        |
|                       |  |             |                 | <b>DRAWING NO.</b> |
|                       |  |             |                 | UNI2-DI            |