



Amegy Bank's new headquarters is located in Houston's Uptown District within Post Oak Park. Designed to support the company's long-term growth, the corporate tower features fifteen levels of office space above a parking podium with a landscaped garden on top. This surrounds a 10,000-square-foot conference pavilion, providing a unique outdoor amenity for employees and visitors.

The tower's gently curved glass exterior offers expansive views of downtown Houston and the Galleria. A double-height lobby,

finished with natural stone and wood, creates an inviting entry experience filled with daylight. The high-performance enclosure incorporates 10-foot floor-to-ceiling insulated glass, introducing natural light deep into the offices while reducing solar heat gain. Behind the tower's modern amenities, Nailor's air distribution solutions provide the comfort, efficiency, and performance that define the workplace experience.

The project achieved LEED Gold certification from the U.S. Green Building Council.



## CASE STUDY

### Amegy Bank Houston Corporate Headquarters

Nailor Products:

- Air Handling Units
- Fire/Smoke Damper
- Flowline Plenums & Diffusers
- Plenum Slot Diffusers
- Ceiling Diffusers
- Underfloor Swirl Diffusers
- Fan Powered Terminal Units
- Single Duct Terminal Units
- Fan Coil Units
- Electric Duct Heaters

Location: **Houston, TX**

Year: **2016**

Building Size/Area: **24 stories /350,000 sq. ft.**

Category: **Corporate Headquarters**

Developer/Project Manager: **Hines**

Design Architect: **Pickard Chilton**

Architect of Record: **Kendall/Heaton Associates**

Structural Engineer:

**Walter P Moore and Associates, Inc.**

Contractor: **D.E. Harvey Builders**

MEP Engineer: **I.A. Naman + Associates, Inc.**

Landscape Architect:

**Clark Condon Associates, Inc.**

Interiors Architect: **Gensler**

Nailor Representative: **Vicon Equipment Inc.**



## AIR HANDLING UNITS

### Model: F Series Central Plant



**THERMAL**  
CORPORATION  
A Division of Nailor International Inc.

In alignment with LEED Certification requirements and ASHRAE Standard 62.1 compliance, Thermal provided a total of 46 Dual Pathway 3" F-Series Air Handling Units for the project.

These units were custom-engineered for underfloor applications, with each system incorporating curved 90-degree sound attenuators to meet the specified Noise Criteria (NC) levels at targeted performance thresholds.

Each air handling unit offers flexible multi-zone functionality, enabling separate pathways for Neutral Air, Chilled Water Cooling, and Mixed Underfloor Air—delivering precise environmental control and enhanced occupant comfort.







## FIRE/SMOKE DAMPERS Model: 1221



The Nailor Model 1221 is a high-performance combination fire and smoke damper engineered for optimal safety and reliability in HVAC systems. They utilize an innovative inter-locking double-skin airfoil blade design that provides a flame and smoke seal, eliminating the need for synthetic blade seals which burn out during fire conditions, and maintains its leakage class up to 2000°F (1093°C) - a feature no other fire/smoke damper in the industry can offer. Designed with a factory-fitted sleeve and concealed, durable linkage, the 1221 ensures easy installation and long-lasting performance. UL 555 and UL 555S certified, this damper meets rigorous fire and smoke standards, making it ideal for wall or floor penetrations, smoke management systems, and grille terminations where both safety and code compliance are critical.

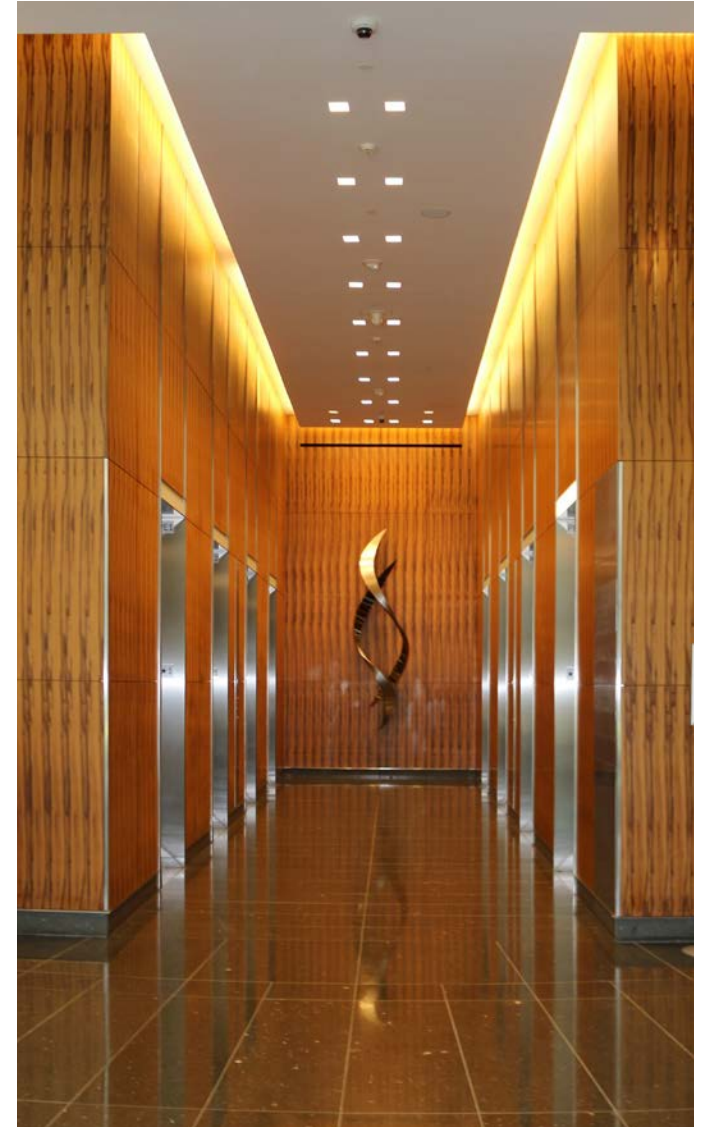


## AIR HANDLING TOWER

Model: TCU



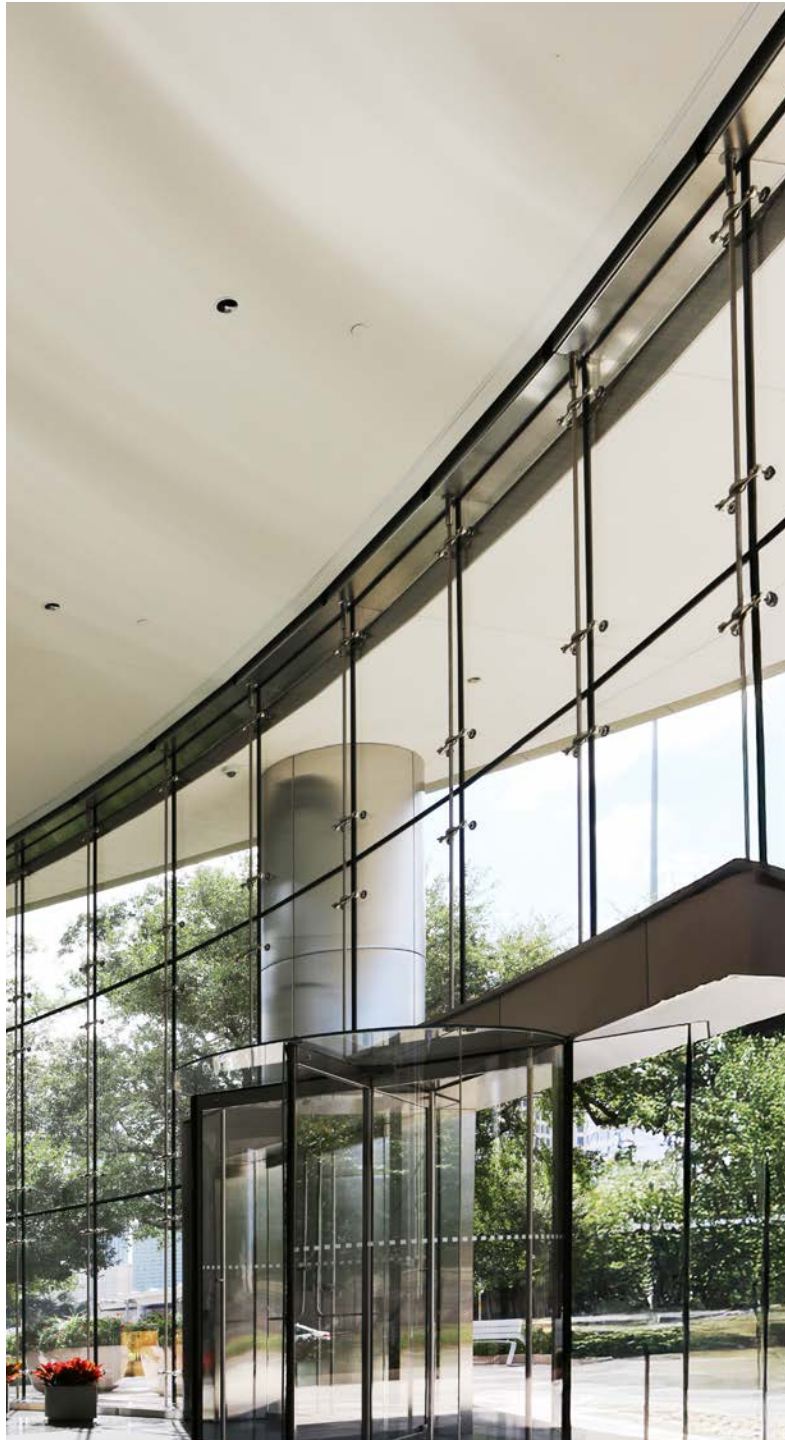
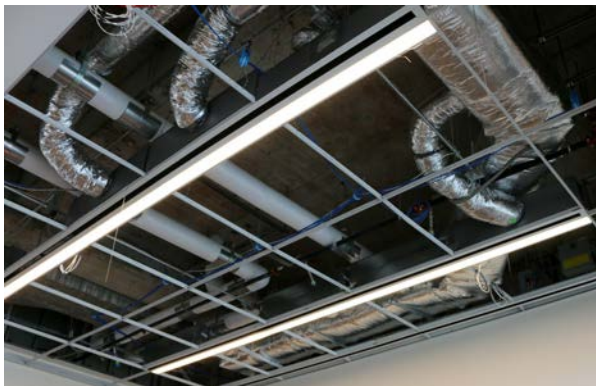
**THERMAL**  
CORPORATION  
A Division of Nailor International Inc.



Thermal's Tranquility Column Units (TCU) support the building's underfloor air distribution system by mixing multiple airstreams and delivering conditioned air directly into the raised floor plenum. This design provides steady temperature control across large open office areas and adapts easily to changing cooling and ventilation needs. The TCU can operate as a primary supply source, a supplemental cooling unit, or as a mixing column for outdoor and return air, giving the system flexibility throughout the tower.

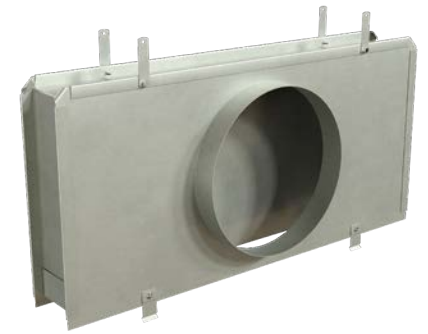
Each unit features smooth exterior panels, customizable framing, and quiet direct-drive plenum fans mounted on vibration-isolated bases to keep sound levels low. Hinged double-wall access doors make service quick and straightforward, and optional built-in filter sections help maintain clean airflow. The TCU delivers reliable, low-noise performance while supporting the building's UFAD design and long-term comfort goals.





## FLOWLINE PLENUMS

Model: **FLPI**



## FLOWLINE LINEAR SLOT DIFFUSERS

Model: **FLH**



Nailor's Flowline Air Distribution system at Amegy Bank's headquarters pairs FLPI plenums with FLH10 and FLH20 Flowline diffusers to deliver uniform, low-noise airflow and a sleek linear ceiling design. The insulated plenums minimize breakout noise and condensation while ensuring balanced performance, and the Flowline diffusers provide a modern, continuous slot appearance that blends seamlessly into office interiors. Together, they create a reliable, energy-efficient solution that enhances both comfort and aesthetics throughout the building.



## PLENUM SLOT DIFFUSERS

Model: 59NDR & 59BSR



Nailor's plenum slot diffusers were selected to meet this project's standards for comfort, flexibility, and modern design. Both the 59NDR and 59BSR deliver uniform air distribution with low sound levels, ensuring a quiet and efficient environment. They are typically installed along the windows in offices and other buildings to create a curtain wall of air that helps temper the glass and reduce drafts.

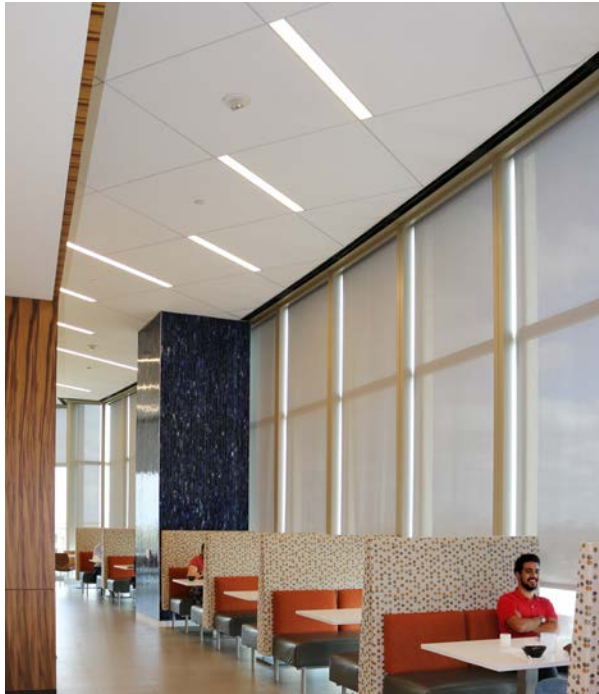
The 59NDR provides a narrow, low-profile design that works well in open office layouts where a subtle ceiling appearance is preferred. The 59BSR offers a slightly wider slot profile, making it a good choice for areas where a stronger ceiling presence is acceptable. Both models include adjustable pattern controllers that allow quick changes to the air pattern, giving the system the flexibility to adapt to different room layouts and occupancy needs while maintaining comfort and performance.







**PLENUM SLOT DIFFUSERS (Con't)**  
Model: 59NDR & 59BSR



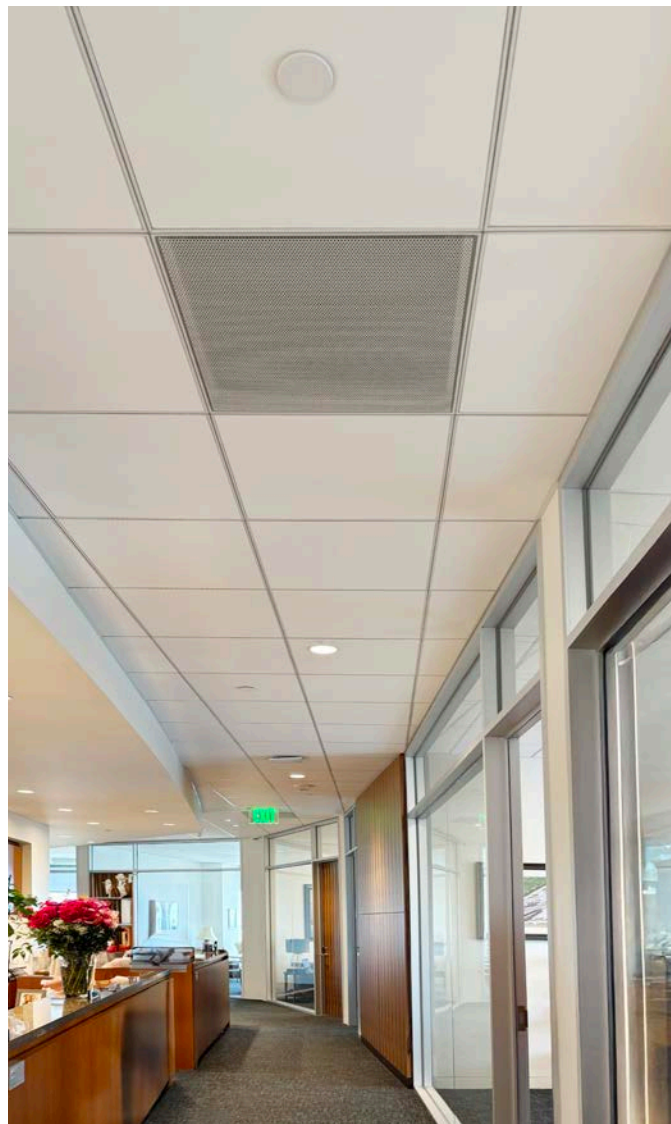
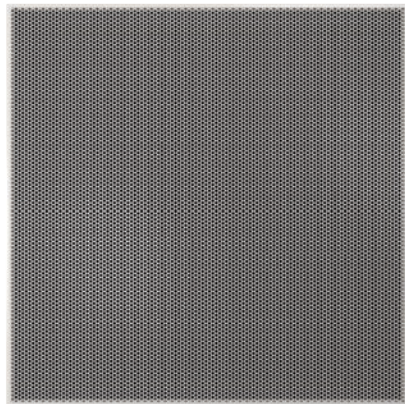
## ARCHITECTURAL CEILING DIFFUSERS

Model: **UNI2 SUPPLY**



## PERFORATED CEILING DIFFUSERS

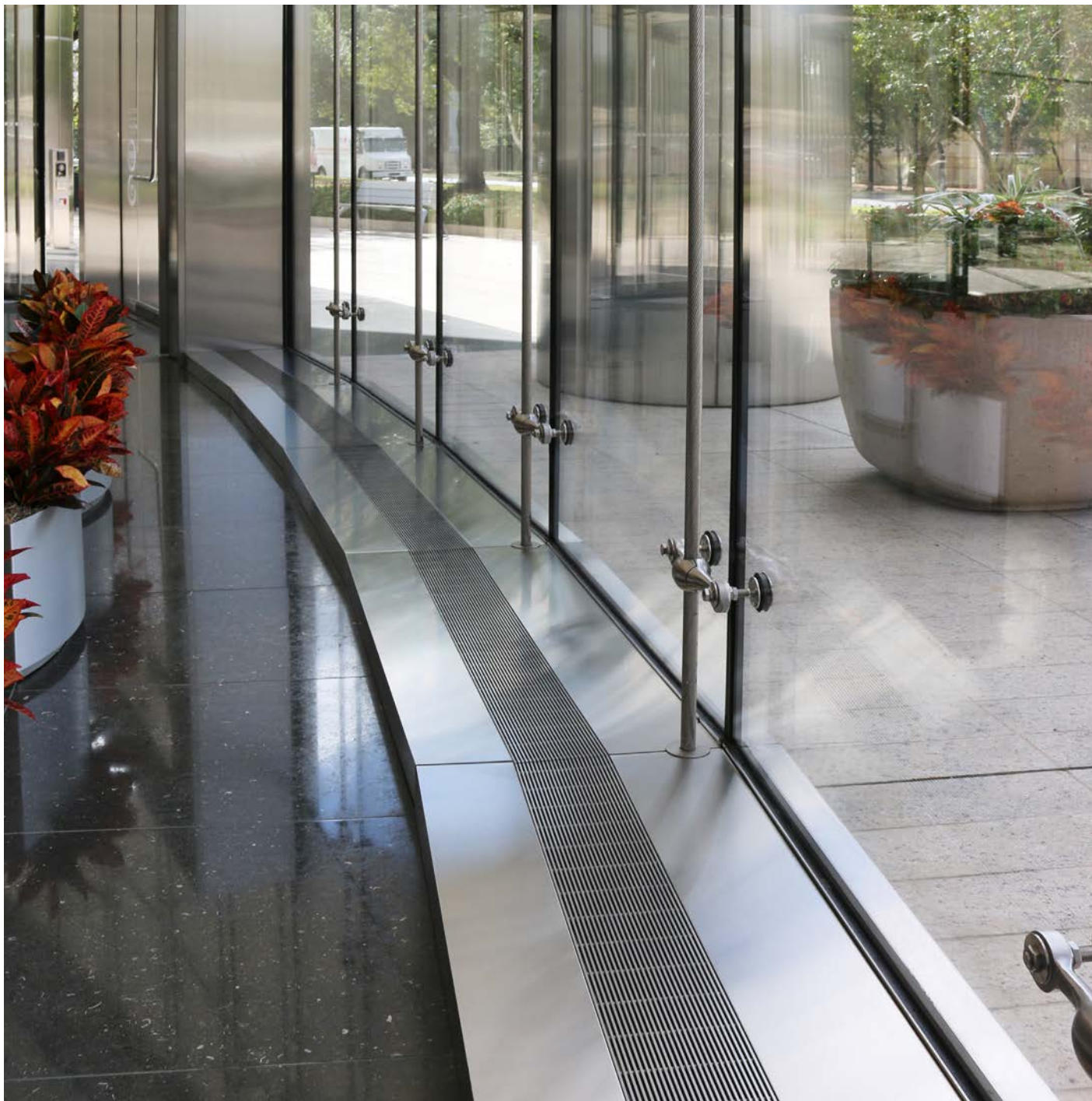
Model: **4360 RETURN**



Nailor's UNI2 plaque ceiling diffusers are designed to provide smooth, uniform air distribution with a clean architectural look. The stamped one-piece face adds strength and durability, while the diffuser's design produces a stable horizontal airflow pattern that promotes good room air mixing. This helps maintain consistent comfort levels in both open offices and enclosed rooms. The UNI2 is offered in a variety of neck sizes and frame styles, giving designers flexibility to match different ceiling systems. Easy to install and simple to maintain, it provides a dependable

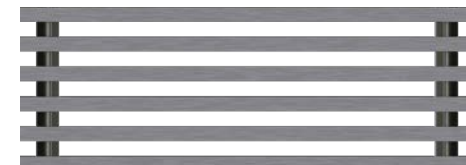
balance of performance, appearance, and value for commercial projects. The 4360 Series perforated return ceiling diffuser combines a modern, flush design with reliable performance. Its perforated face integrates smoothly into standard ceiling grids, making it ideal for offices and other quiet spaces. The diffuser's durable construction ensures long service life, and its straightforward installation makes it a practical choice for contractors and building owners alike. Together, the 4360 and UNI2 provide flexible and efficient solutions for ceiling-mounted air distribution.





## LINEAR BAR GRILLES

Model: **49-480**



49-480 Linear Bar Grille Cores were used on the floor in the main lobby to keep the space looking clean and modern. This model features zero deflection bars, giving it a straight, minimal look that blends in well with the lobby's architecture. The extruded aluminum construction and pressed-in bar design keep the core sturdy and durable, even in high traffic areas.

With standard sizing and the ability to run sections up to 72 inches, it was easy to create long, seamless grille lines that fit the building's overall style. The result is a subtle, dependable air distribution detail that looks good and supports the polished feel of a Class A space.



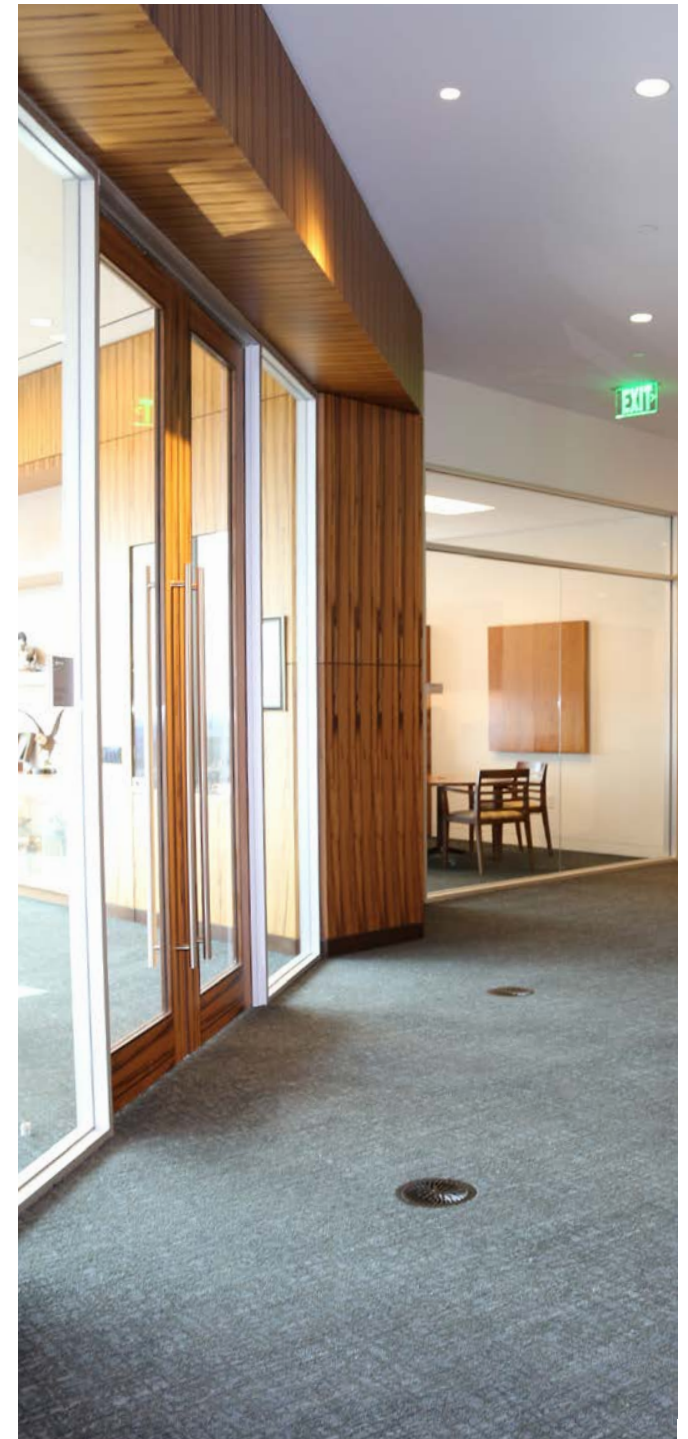
## FLOOR SWIRL DIFFUSERS

Model: ANFD



Nailor's ANFD Swirl Diffusers are made for raised floor air systems and give a strong, even swirl of air that quickly mixes with room air. This helps keep the space comfortable and consistent right at the floor level where people are working.

The round design fits neatly into the floor panels and stays low-profile so it doesn't stand out. Each diffuser has a built-in volume control, so the airflow can be adjusted at each location without affecting the rest of the system. Simple, durable, and easy to move if layouts change, the ANFD is a reliable choice for underfloor air distribution in office spaces like Amegy Bank's headquarters.



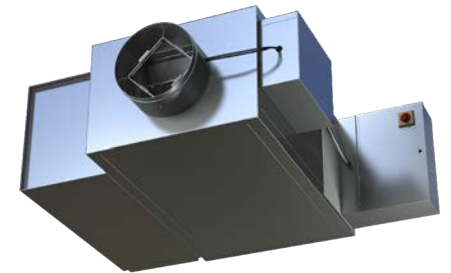




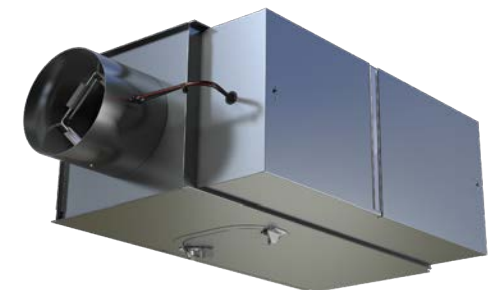
## FAN POWERED TERMINAL UNITS Model Series: 37SST



## FAN POWERED TERMINAL UNITS Model Series: 35S



## SINGLE DUCT TERMINAL UNITS Model Series: 3000



Nailor's 37SST Stealth Series units were used where ceiling space was limited. At only 11 inches high, the 37SST fits easily into shallow plenums common in high-rise offices. Its Stealth technology keeps sound levels low while still providing steady airflow and reliable temperature control in areas where noise and comfort are important.

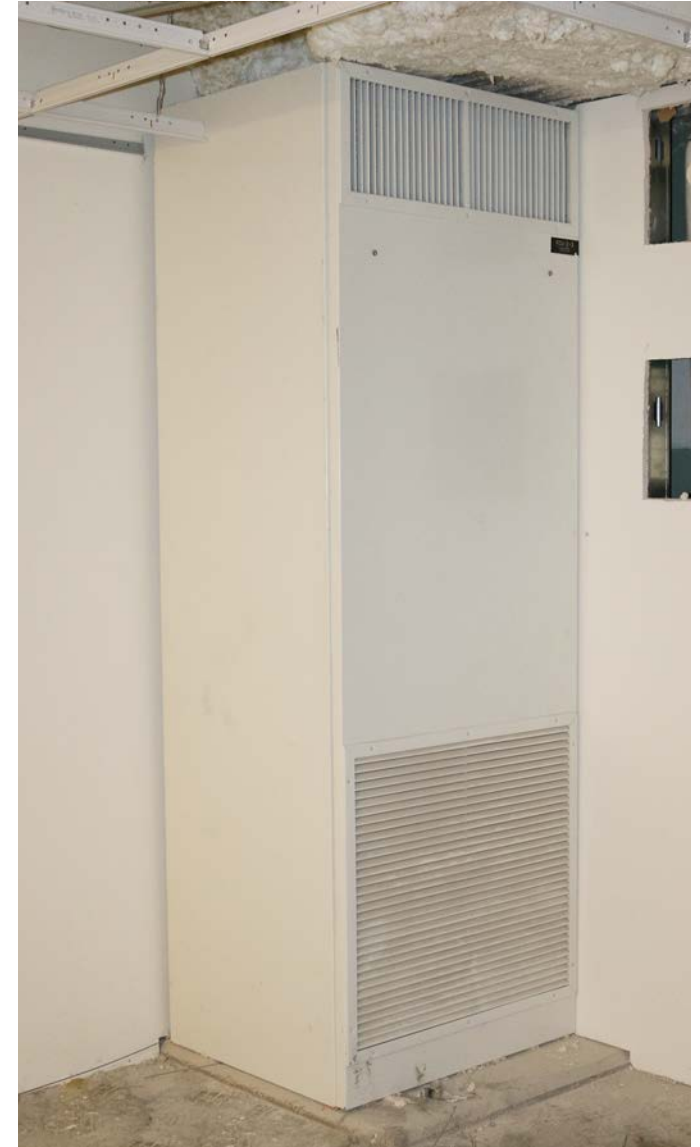
The 35S Series offers another compact fan powered option for floors with more standard plenum space. It provides strong sound performance and dependable airflow without taking up unnecessary

room, making it a practical choice across open offices and general work areas.

For zones that require simple, direct airflow control, the 3000 Series single duct units deliver a flexible solution. They can operate in constant or variable air volume systems and use a responsive control damper to maintain stable airflow and comfortable temperatures. With multiple configuration options, the 3000 Series supports consistent comfort throughout the building.

## VERTICAL FAN COIL UNITS

Model: D39VHZ



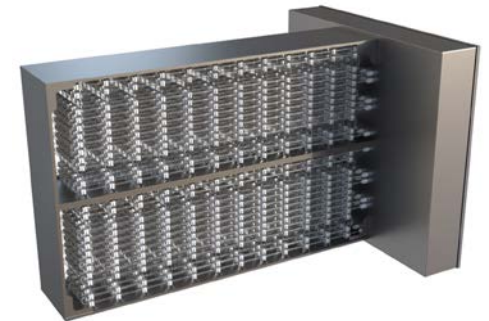
Nailor's D39VHZ vertical fan coil units provide some of the industries highest range in airflow of highly efficient heating and cooling ideal for high rise buildings. These units are designed for exposed floor-mounted or concealed installations, allowing them to fit seamlessly into the building layout without taking up valuable space. The integral risers, which can be shipped separately for faster field installation, allow for the of units to save on cost as they are installed in a "stack" from one floor to the next sharing the common set of risers.

The D39VHZ is equipped with high-efficiency ECM motors, which deliver quieter operation, improved energy performance, and more precise airflow control. The ease of serviceability makes the unit an industry favorite as all kinds of maintenance from changing filters to replacing motors can be done with ease. With durable construction and easy service access, the D39VHZ offers long-term reliability while helping maintain consistent comfort throughout the tower.





**ELECTRIC DUCT HEATER**  
Model: DHRS with optional SCR



Nailor DHRS Series electric duct heaters are built for dependable heating in commercial air systems. Their slip-in design makes them easy to install in standard ductwork, and the heavy-duty frame ensures long-lasting performance. Each unit is built with safety in mind, using automatic and manual reset cutouts to prevent overheating. When ordered with the optional SCR (Silicon Controlled

Rectifier) controls, the heater can adjust its output smoothly instead of switching fully on and off. This provides more even temperatures, reduces energy waste, and helps keep spaces comfortable without sudden changes in airflow or noise. The DHRS Series combines durability, safety, and precise control to deliver a reliable and efficient heating solution for commercial buildings.





## **United States**

**Nailor Industries, Inc.**

### **International Headquarters**

4714 Winfield Road  
Houston, TX 77039

Tel: (281) 590-1172

### **Regional Manufacturing/Sales**

3730 Civic Center Drive  
North Las Vegas, NV 89030

Tel: (702) 648-5400

## **Canada**

**Nailor Industries, Inc.**

### **Canadian Headquarters**

98 Toryork Drive  
Toronto, ON M9L 1X6

Tel: (416) 744-3300

### **Regional Manufacturing/Sales**

Unit F, 4427-72nd Avenue S.E.  
Calgary, AB T2C 2G5

Tel: (403) 279-8619

**nailor.com**

CSAMEGY 12-22-2025

