



Nailor®

CASE STUDY

The Old Post Office

Nailor Products:

- Architectural Ceiling Diffusers
- Perforated Ceiling Diffusers
- Supply and Return Grilles
- Industrial Supply Grilles
- Curved Spiral Duct Grilles
- Displacement Diffuser Wall Mounts
- Single Duct Terminal Units
- Fan Powered Terminal Units
- Horizontal Fan Coil Units
- Linear Slot Diffusers
- Flowline Diffusers
- Plenum Slot Diffusers

Location: **Chicago, IL**

Year: **2020**

Buildings/Size/Area: **3 million sq. ft.**

Category: **Corporate**

Architect: **Gensler (Chicago)**

Developer: **610 W Companies**

MEP/FP & Technology Engineer:
McGuire Engineers

Structural Engineer: **Wiss Janney Elstner**

Contractor: **Bear Construction**

Landscape Architect: **Hoerr Schaudt**

Interiors: **Gensler**

Nailor Representative: **Hatchell & Associates Inc.**

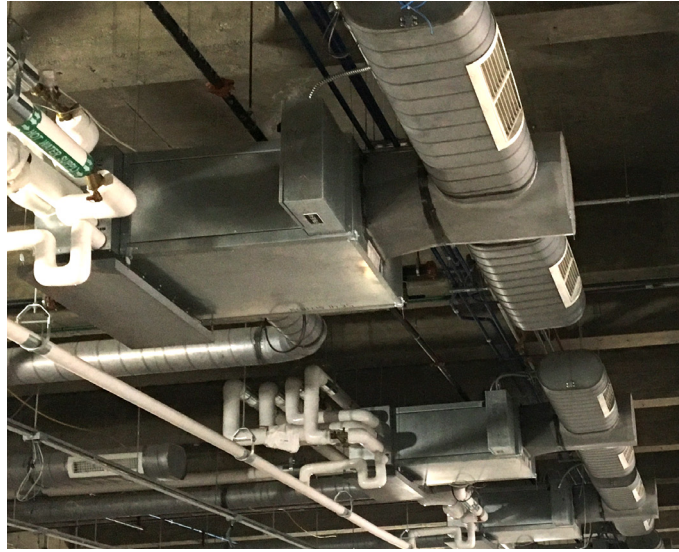
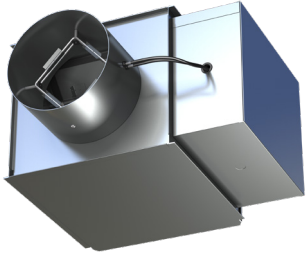
Originally constructed in 1921, the Old Post Office in Chicago was redeveloped into a modern Class A (high-end) office space while preserving the building's historic character and architectural presence. Spanning more than 3 million square feet across a multi-building campus, the project required HVAC solutions that could support large open floor plates, varying tenant needs, and long-term flexibility within an existing landmark structure.

Beyond the scale of the project, several mechanical constraints shaped the system design. Rooftop space was limited due

to its use as an amenity deck, restricting the placement of dedicated outdoor air equipment. Existing structural pylons, tight ceiling cavities, varying floor heights, and the building's location above active rail lines required careful coordination of ductwork, equipment, and distribution paths. Nailor air distribution and terminal units were selected to work within these limitations while maintaining consistent airflow, acoustic control, and visual integration throughout the space. The result is a system that delivers modern performance standards without compromising the original structure.

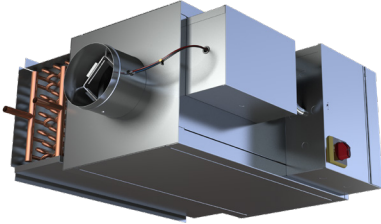
SINGLE DUCT TERMINAL UNITS

Model: D3001



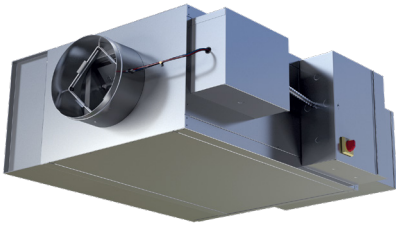
FAN POWERED CHILLED WATER TERMINAL UNITS

Model: D33SZ



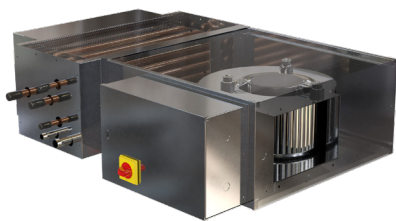
FAN POWERED STEALTH TERMINAL UNITS W/ ECM/EPIC FAN TECHNOLOGY®

Model: D35SWT



HORIZONTAL FAN COIL UNITS WITH EPIC ECM MOTOR

Model: D37FHZW



Single duct terminal units with hot water reheat were used throughout the building to provide zone level temperature control for different tenant areas.

Fan powered terminal units were installed where additional air movement was needed. Because many spaces have open ceilings, sound levels were an important consideration. The Stealth series design helps maintain quiet operation while still delivering consistent airflow. Optional FN2 90° electrical enclosures are hinged for easier access and can be mounted

remotely to help meet NEC code requirements in tight ceiling spaces. Fan powered chilled water terminal units were used alongside the building's dedicated outdoor air system, allowing ventilation air to be delivered efficiently without increasing duct sizes.

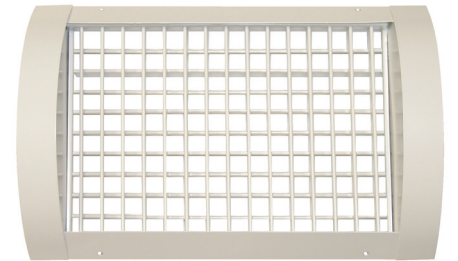
Low-profile, high-performance horizontal fan coil units were installed where localized conditioning was needed and mechanical space was limited. At only 11" tall, the 37FH line can handle static pressures up to 0.70 in. w.g.



INDUSTRIAL SUPPLY GRILLES
Model: 45DL1



CURVED SPIRAL DUCT GRILLES
Model: 51DHC



Industrial supply grilles were utilized in areas featuring exposed ceilings where mechanical systems remain visible. In these open environments, air distribution components needed to provide reliable performance while complementing the building's industrial character. The heavy duty construction and louvered design allow controlled airflow while fitting naturally within exposed structural conditions.

Curved spiral duct grilles were incorporated where air is delivered directly from exposed spiral ductwork. Their curved profile allows the grille to mount flush to the duct surface, eliminating the need for additional

transitions or framing components. This simplified installation and maintained a clean mechanical presentation while supporting efficient air delivery.

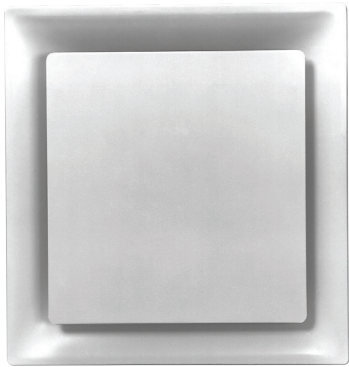
Displacement diffusers were installed in select areas where low velocity air delivery was preferred without relying solely on overhead supply. By introducing conditioned air at floor level, these diffusers help improve comfort within the occupied zone and reduce stratification in spaces with higher ceilings. Their integration into walls and stair risers allowed them to support airflow performance while preserving architectural lines.

**DISPLACEMENT DIFFUSER
WALL MOUNT**
Model: DWR1



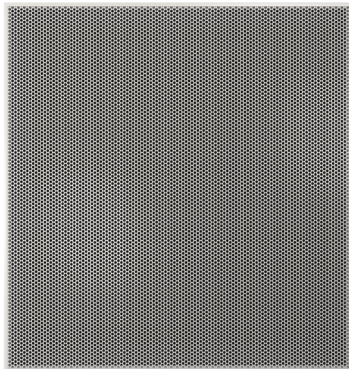
ARCHITECTURAL CEILING DIFFUSERS

Model: AUNI2



PERFORATED RETURN CEILING DIFFUSERS

Model: 4360A



RETURN GRILLES

Model: 6145



Architectural ceiling diffusers were installed throughout office and shared spaces to provide even air distribution while maintaining a clean ceiling appearance. With open floor plans and visible ceiling conditions, it was important that supply devices blend seamlessly into the layout without competing with lighting or structural elements. Their low profile design helped preserve ceiling height while supporting consistent airflow across large tenant areas.

Perforated return ceiling diffusers were used alongside the supply diffusers to maintain balanced airflow and overall system performance. In spaces where visual simplicity was important, the perforated return

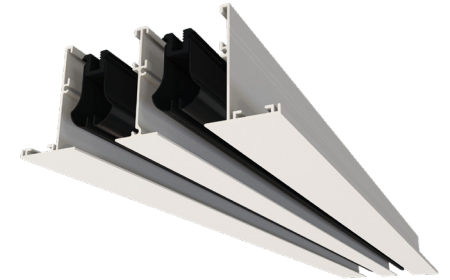
face aligned with surrounding ceiling components, allowing the return system to remain discreet while still functioning effectively. This approach supported both airflow balance and architectural consistency throughout open areas.

Supply and return grilles were incorporated in areas requiring durability and flexibility. Given the building's mix of office, public, and amenity spaces, airflow components needed to adapt to different layouts and mounting conditions. These grilles provide dependable performance while maintaining a consistent appearance across both wall and ceiling applications, helping support comfort throughout the redevelopment.



LINEAR SLOT DIFFUSERS

Model: 5010



FLOWLINE ARCHITECTURAL DIFFUSERS

Model: FLH/FLV



PLENUM SLOT DIFFUSERS

Model: 5715I



Linear slot diffusers were incorporated to provide continuous air distribution along longer runs in open and shared spaces. Even airflow across these areas helps reduce hot and cold spots while maintaining a minimal visual profile. Their adaptability supports varying ceiling conditions and tenant layouts throughout the building.

Flowline architectural diffusers were selected to provide linear air distribution in areas where clean lines and controlled airflow were both important. Their slim profile allows them to integrate into ceilings

without disrupting surrounding design elements, supporting consistent air delivery while maintaining a continuously clean look.

Plenum slot diffusers were used in areas where simplified above ceiling coordination was beneficial. By integrating directly into standard lay in T bar ceilings and reducing the need for individual duct connections at each outlet, they helped address space constraints while maintaining reliable and adjustable airflow performance.



United States

Nailor Industries, Inc.

International Headquarters

4714 Winfield Road
Houston, TX 77039

Tel: (281) 590-1172

Regional Manufacturing/Sales

3730 Civic Center Drive
North Las Vegas, NV 89030

Tel: (702) 648-5400

Canada

Nailor Industries Inc.

Canadian Headquarters

98 Toryork Drive
Toronto, ON M9L 1X6

Tel: (416) 744-3300

Regional Manufacturing/Sales

Unit F, 4427-72nd Avenue S.E.
Calgary, AB T2C 2G5

Tel: (403) 279-8619

nailor.com

CSOPO 4-22-2026

Nailor® is a registered trademark of Nailor Industries, Inc.

