



# Nailor®

## CASE STUDY

### The Westin at the Woodlands

Nailor Products:

- FlowLine™ Linear Diffusers

Location: **The Woodlands, TX**

Year: **2015**

Buildings/Size/Area:  
**12 stories / 220,000 sq. ft.**

Category: **Hotel**

Architect: **Gensler**

Contractor: **JE Dunn Construction**

Interiors: **Waldrop+nichols Studio**

The Nailor FlowLine™ product is an extremely versatile high capacity architectural linear diffuser system that can be selected to meet any design need. FlowLine™ was chosen as a solution for The Westin at The Woodlands because the number of throw patterns, frames, capacity, and smooth curves could allow the one product to meet the needs of the design.

The highlight of The Westin at The Woodlands architectural design is the two-story staircase atrium located in the lobby. FlowLine™ was used in both ceiling and side wall configurations in the same

radius as the circular atrium to seamlessly incorporate into the architectural design. The large capacity enables the FlowLine™ system to handle the high air flows required to conditioning the large windows without creating any noise, contributing to the thermal and acoustical comfort of the occupants. The design required a curved ceiling mounted diffuser system to handle the heat load from the windows that is supplemented by a radiused sidewall diffuser to support the rest of the space. Both designs used the concealed frame configuration to seamlessly integrate with the drywall ceiling and walls.

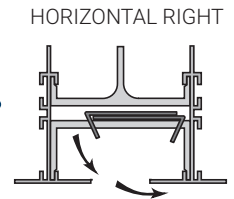


## FLOWLINE™ LINEAR DIFFUSERS

Model: FL

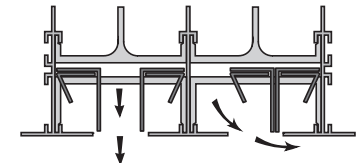


The FlowLine™ linear diffuser was selected throughout The Westin to meet both architectural and performance requirements across a variety of spaces. In the staircase atrium, the ceiling pattern incorporated a flat curve profile, while the sidewall application utilized a concave face curve, with convex face curve options also available to support different design intents. In interior spaces, FlowLine™'s adjustable horizontal throw pattern made it an ideal solution for hallway conditioning. Concealed installations were used to maintain a clean ceiling appearance, while the long throw capability and adjustable pattern deflectors allowed the diffuser to quietly and effectively condition wide corridors. In areas requiring both perimeter and interior air distribution, such as the lobby restaurant, a dual-slot FlowLine™ configuration was used to provide coverage along exterior glazing while evenly distributing air throughout the space

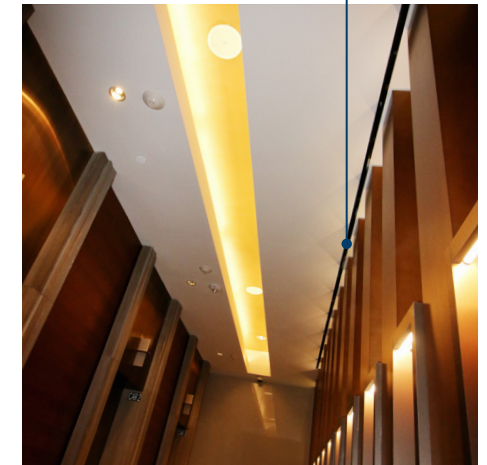


FLAT FACE CURVE

CONCAVE FACE CURVE



VERTICAL & HORIZONTAL











## **United States**

**Nailor Industries, Inc.**

**International Headquarters**

4714 Winfield Road  
Houston, TX 77039

Tel: (281) 590-1172

**Regional Manufacturing/Sales**

3730 Civic Center Drive  
North Las Vegas, NV 89030

Tel: (702) 648-5400

## **Canada**

**Nailor Industries, Inc.**

**Canadian Headquarters**

98 Toryork Drive  
Toronto, ON M9L 1X6

Tel: (416) 744-3300

**Regional Manufacturing/Sales**

Unit F, 4427-72nd Avenue S.E.  
Calgary, AB T2C 2G5

Tel: (403) 279-8619

**nailor.com**

CSWAW 11-20-2021

