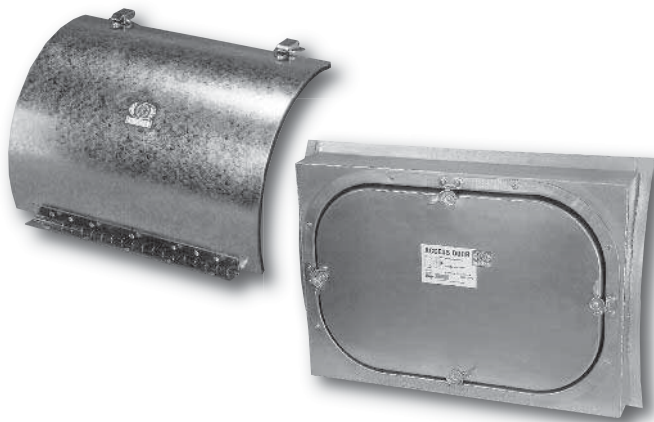


MODEL 0840-6 PLENUM ACCESS DOOR

Nailor Model 0840-6 ultra-low leakage plenum access door provides easy access to larger plenums and equipment housings and is suitable for use in high, medium or low pressure applications. The design features include positive seal gasketing and insulation which provide assured low-leakage performance. The die-formed frame, hinged door and die-cast closure handles provide extra strength and maximum operational convenience.



Model 0840-6



Model 0890

Model 0895

MODELS 0890 & 0895 FOR ROUND DUCT

Nailor Model 0890 is an economical round duct access door suitable for use in low pressure applications. A durable hinge permits the heavy duty 16 ga. (1.6) door to swing open fully, allowing unobstructed access to the duct, while the zinc plated strikes and catches and polyurethane foam gasketing provide a tight, positive seal when closed.

Model 0895 turret style access doors provide heavy duty construction with easy opening, suitable for use in medium and high pressure round duct systems. Features include an all-welded turret box and saddle formed to duct radius, and a high-pressure 0800 Series access door that is caulked and fastened to turret. Zinc plated progressive camlocks and bulb type door gasket provide a secure, tight seal.

MODEL 0900-1 & 0900-2 UTILITY ACCESS DOORS FIRE RATED & GENERAL USE

Nailor Model 0900-1 fire-rated access door is for use whenever it is necessary to provide service access to utilities located within fire separations such as corridor walls, stairwells and ceilings. The 2" (51) thick insulation, which acts as a heat barrier, is also ideal for reducing sound transmission through access opening. The flush key operated latch provides convenient and secure opening and closing. Model 0900-2 is a multi-purpose access door designed to provide convenient access to utilities contained within walls or ceilings. This versatile access door installs flush in drywall, masonry block or tile, and plaster walls and ceilings with a clean unobtrusive finish. Both models are offered in an array of standard sizes, with special sizes available upon request.



Model 0900-1

Model 0900-2

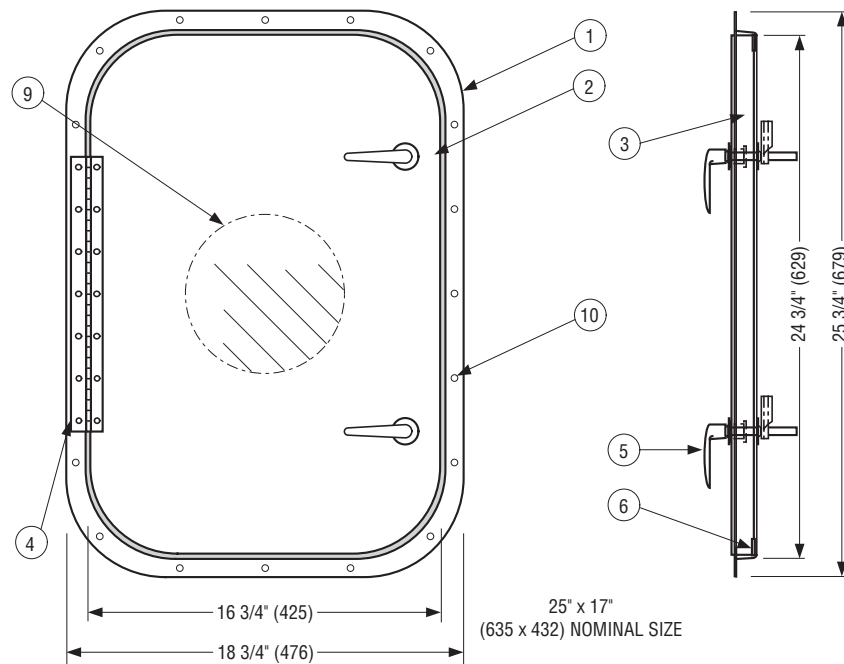
- PLENUM ACCESS DOOR
- HINGED
- INSULATED
- ULTRA-LOW LEAKAGE

Model: 0840-6



Model 0840-6

The Nailor Model 0840-6 ultra-low leakage plenum access door provides easy access to larger plenums and equipment housings and is suitable for use in high, medium or low pressure applications. The design features include positive seal gasketing and insulation which provide assured low-leakage performance. The die-formed frame, hinged door and die-cast closure handles provide extra strength and maximum operational convenience.



STANDARD CONSTRUCTION:

- 1. Frame:** Die-formed 22 ga. (0.85) galvanized steel flange frame for strength.
- 2. Door Panel:** Die-formed 22 ga. (0.85) galvanized steel door panel for extra strength.
- 3. Insulation:** 1" (25) dual density insulation with 22 ga. (0.85) galvanized steel backing plate.
- 4. Hinge:** Zinc plated piano hinge.
- 5. Fasteners:** Die-cast closure hatches.
- 6. Seal:** Positive bulb flexible PVC door seal.
- 7. Template:** Layout template included.
- 8. Mounting:** 3/16" (5) dia. pre-punched attachment holes on inner flange for surface mounting.

COMMON OPTIONS:

- 9. Viewport:** Viewport - 5 1/2" (140) dia..
- 10. Mounting:** 3/16" (5) dia. pre-punched attachment holes on outer flange for flush mounting.

LEAKAGE INFORMATION:

Conforms to British Standard DW144 Class A, B and C.
Maximum allowable leakage at 8" w.g. (2 kPa):
0.286 cfm (8.1 l/min.)

HOW TO ORDER OR TO SPECIFY

MODEL: 0840-6 PLENUM ACCESS DOOR

EXAMPLE: 0840-6 - 2517 - VP - PO

1. **Model**

0840-6 Plenum Access Door,
25" x 17" (635 x 432) only

OPTIONS:

2. VP Viewport.
3. PO Pre-punched holes on outer flange.

SUGGESTED SPECIFICATION:

Provide and install as shown on plans and/or schedules, plenum access doors as manufactured by Nailor Industries, Inc., which meet the following criteria: Access doors shall meet British Standard DW144 Class C for leakage. Manufacturer shall submit leakage data tested to minimum of 8 in. w.g. (2 kPa). Frame shall be of oval design, constructed of die-formed 22 ga. (0.85) galvanized steel. Door shall constructed of double skin die-formed 22 ga. (0.85) galvanized steel with 1" (25) insulation fully enclosed within the door panel. Door shall be attached to frame with continuous plated steel piano hinge and shall close securely by means of two die-cast closure handles. Bulb type seal shall be integrally fastened to door for positive seal. Standard of acceptance shall be Nailor Industries Model 0840-6.

- OUT-SWING FRAME (NEGATIVE PRESSURE)
- THERMAL BREAK PLENUM ACCESS DOOR
- EXTRUDED ALUMINUM FRAME
- INSULATED STEEL DOOR PANELS

Models:

0850-2L Left Hinge

0850-2R Right Hinge

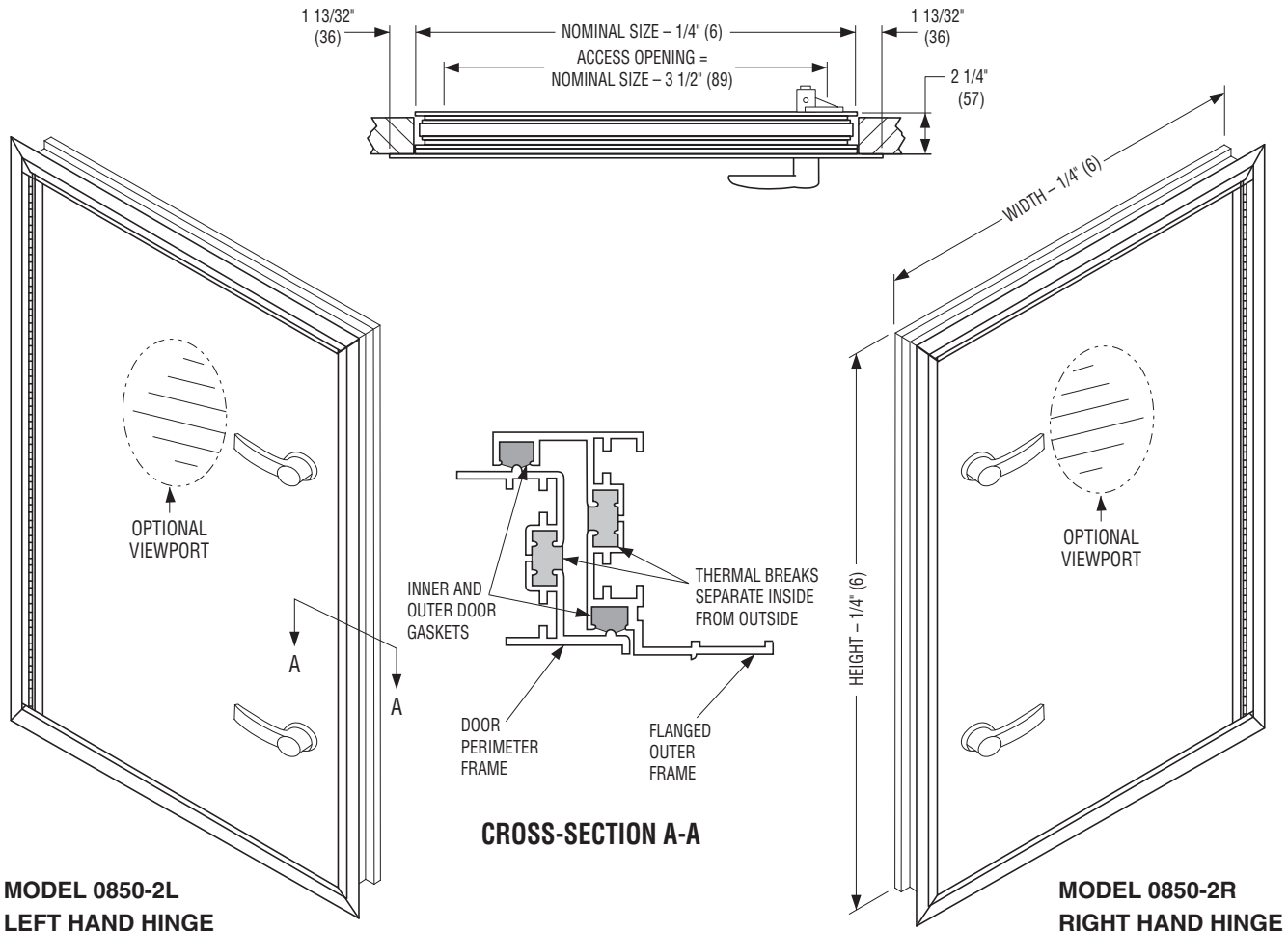
Standard Sizes:

12 x 12 (305 x 305)	30 x 72 (762 x 1829)
18 x 18 (457 x 457)	36 x 36 (914 x 914)
18 x 24 (457 x 610)	36 x 48 (914 x 1219)
24 x 24 (610 x 610)	36 x 60 (914 x 1524)
24 x 36 (610 x 914)	36 x 72 (914 x 1829)
24 x 48 (610 x 1219)	36 x 84 (914 x 2134)
24 x 60 (610 x 1524)	48 x 48 (1219 x 1219)
24 x 72 (610 x 1829)	48 x 60 (1219 x 1524)
30 x 36 (762 x 914)	48 x 72 (1219 x 1829)
30 x 48 (762 x 1219)	48 x 84 (1219 x 2134)
30 x 60 (762 x 1524)	48 x 96 (1219 x 2438)

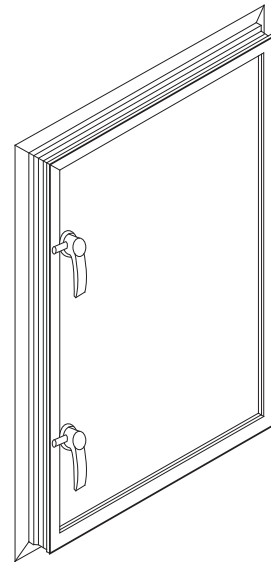


Model 0850-2R
(with optional viewport)

Nailor Model Series 0850 thermal break plenum access doors are ultra-low leakage, premium quality doors designed for out-swing (negative pressure) applications. Design features include extruded aluminum frames with attractive mitered corner construction, thermal break door and frame design that utilizes pour-and-debridging technology to achieve levels of thermal isolation unsurpassed by other methods and double door gaskets to assure low levels of leakage. A standard 3 lb. density insulation is used between the 20 ga. (1.0) galvanized steel inner and outer door panels. Ergonomic adjustable door latches have cam-locking surfaces for smooth operation and positive seal. All units feature full length stainless steel piano type hinges, for either left hand or right hand operation.



- IN-SWING FRAME (POSITIVE PRESSURE)
- THERMAL BREAK PLENUM ACCESS DOOR
- EXTRUDED ALUMINUM FRAME
- INSULATED STEEL DOOR PANELS



Model 0855-2R

Models:

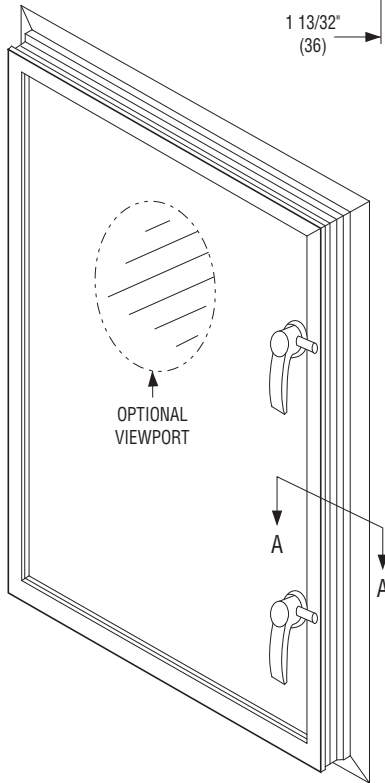
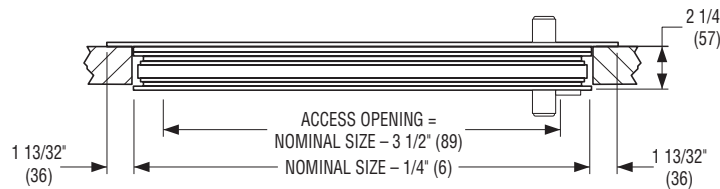
0855-2L Left Hinge

0855-2R Right Hinge

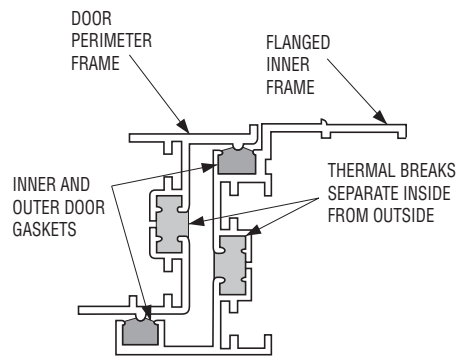
Standard Sizes:

12 x 12 (305 x 305)	30 x 72 (762 x 1829)
18 x 18 (457 x 457)	36 x 36 (914 x 914)
18 x 24 (457 x 610)	36 x 48 (914 x 1219)
24 x 24 (610 x 610)	36 x 60 (914 x 1524)
24 x 36 (610 x 914)	36 x 72 (914 x 1829)
24 x 48 (610 x 1219)	36 x 84 (914 x 2134)
24 x 60 (610 x 1524)	48 x 48 (1219 x 1219)
24 x 72 (610 x 1829)	48 x 60 (1219 x 1524)
30 x 36 (762 x 914)	48 x 72 (1219 x 1829)
30 x 48 (762 x 1219)	48 x 84 (1219 x 2134)
30 x 60 (762 x 1524)	48 x 96 (1219 x 2438)

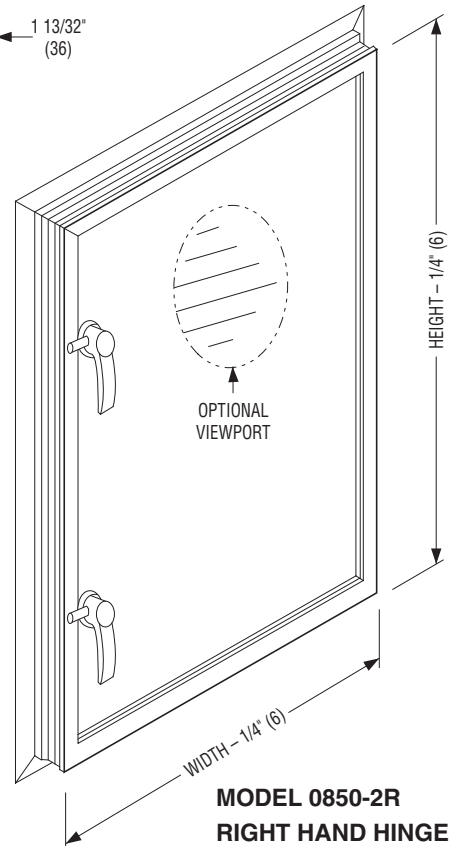
Nailor Model Series 0855 thermal break plenum access doors are ultra-low leakage, premium quality doors designed for in-swing (positive pressure) applications. Design features include extruded aluminum frames with attractive mitered corner construction, thermal break door and frame design that utilizes pour-and-debridging technology to achieve levels of thermal isolation unsurpassed by other methods and double door gaskets to assure low levels of leakage. A standard 3 lb. density insulation is used between the 20 ga. (1.0) galvanized steel inner and outer door panels. Ergonomic adjustable door latches have cam-locking surfaces for smooth operation and positive seal. All units feature full length stainless steel piano type hinges, for either left hand or right hand operation.



**MODEL 0855-2L
LEFT HAND HINGE**



CROSS-SECTION A-A



**MODEL 0855-2R
RIGHT HAND HINGE**

HOW TO ORDER OR TO SPECIFY

MODELS: 0850-2L, 0850-2R, 0855-2L & 0855-2R THERMAL BREAK PLENUM ACCESS DOORS

EXAMPLE: 0855-2L - DH2 - VP8

1. Models

Negative Pressure

0850-2L Negative Pressure,
Out-swing Frame,
Right Hand Hinge

0850-2R Negative Pressure,
Out-swing Frame,
Left Hand Hinge

Positive Pressure

0855-2L Positive Pressure,
In-swing Frame,
Left Hand Hinge

0855-2R Positive Pressure,
In-swing Frame,
Right Hand Hinge

OPTIONS:

2. Door Handles

DH0	None, Prep Only.
DH2	2 Per Door (recommended min. for door heights under 60" [1524]).
DH3	3 Per Door (recommended min. for door heights 60" [1524] through 80" [2032]).
DH4	4 Per Door (recommended min. for door heights over 80" [2032]).

3. View Port

Dual Pane, hermetically sealed Lexan view glass window.

VP8 8" (203) round. Minimum door size is 18" x 18" [457 x 457].

VP12 12" (305) round. Minimum door size is 24" x 24" [610 x 610].

SUGGESTED SPECIFICATION:

Provide and install as shown on plans and/or schedules, thermal break plenum access doors as manufactured by Nailor Industries, Inc., which meet the following criteria: Frames shall be extruded aluminum with mitered corner construction. Door panels shall be constructed of 20 ga. (1.0) galvanized steel. Insulation between door panels shall be 3 lb. density. Thermal isolation shall be achieved utilizing pour-and-debridging technology and each door shall be complete with double gaskets assuring low leakage performance. Door shall be attached to frame with continuous stainless steel piano type hinge and shall close securely by means of die cast closure handles. 1. Out-swing (negative pressure) operation. Standard of acceptance shall be Nailor Industries Model (**specifier to select**) 0850-2L with left hand hinge **or** 0850-2R with right hand hinge **or** 2. In-swing (positive pressure) operation. Standard of acceptance shall be Nailor Industries Model (**specifier to select**) 0855-2L with left hand hinge **or** 0855-2R with right hand hinge.