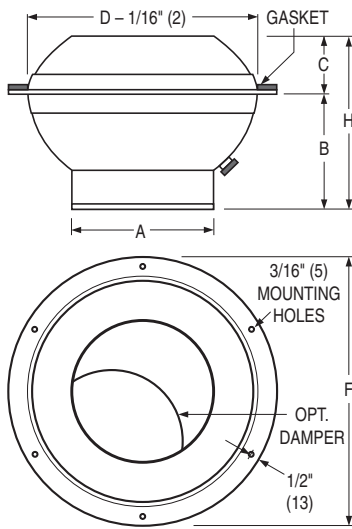




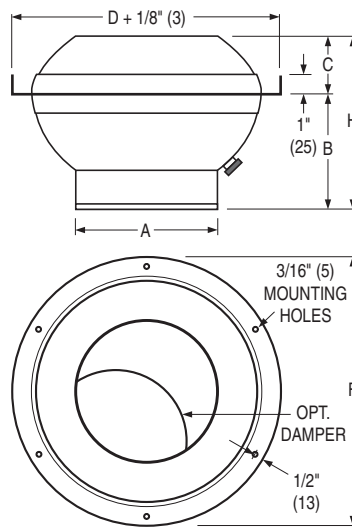
ROUND PUNKAH LOUVER / JET NOZZLE
ALUMINUM • HIGH VELOCITY • ROUND NECK
MODEL: RPL



SM Frame
(Surface Mount)

Nom. Size	A	B	C	D	F	H	Mtg. Holes
* 3 (76)	1 5/8 (41)	1 3/4 (44)	15/16 (24)	3 1/8 (79)	5 (127)	2 11/16 (152)	3
4 (102)	2 (51)	2 9/16 (65)	3/4 (19)	4 (102)	6 (152)	3 5/16 (84)	3
6 (152)	3 (76)	3 1/16 (78)	1 7/16 (37)	6 (152)	8 (203)	4 1/2 (114)	4
8 (203)	4 3/8 (111)	4 1/4 (108)	1 3/4 (44)	8 (203)	10 (254)	6 (152)	4
10 (254)	5 3/4 (146)	5 1/2 (140)	2 7/8 (73)	10 (254)	12 (305)	8 3/8 (213)	6
12 (305)	7 3/8 (187)	6 (152)	3 (76)	12 (305)	14 (356)	9 (229)	6
14 (356)	8 5/8 (219)	7 1/8 (181)	4 1/8 (105)	14 (356)	16 (406)	11 1/4 (286)	6
16 (406)	9 3/4 (248)	8 1/4 (210)	4 3/4 (121)	16 (406)	18 (457)	13 (330)	6
18 (457)	10 1/2 (267)	9 1/2 (241)	4 1/4 (108)	18 (457)	20 (508)	13 3/4 (349)	8
20 (508)	12 3/8 (314)	10 7/8 (276)	4 7/8 (124)	20 (508)	22 (559)	15 3/4 (400)	8

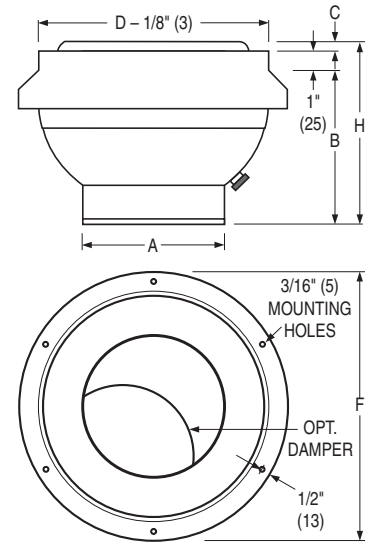
* Aperture damper is not available on 3" (76) unit.



RD Frame
(Exposed Round Duct)

Nom. Size	A	B	C	D	F	H
4 (102)	2 (51)	2 9/16 (65)	3/4 (19)	6 (152)	6 (152)	3 5/16 (84)
6 (152)	3 (76)	3 1/16 (78)	1 7/16 (37)	8 (203)	8 (203)	4 1/2 (114)
8 (203)	4 3/8 (111)	4 1/4 (108)	1 3/4 (44)	10 (254)	10 (254)	6 (152)
10 (254)	5 3/4 (146)	5 1/2 (140)	2 7/8 (73)	12 (305)	12 (305)	8 3/8 (213)
12 (305)	7 3/8 (187)	6 (152)	3 (76)	14 (356)	14 (356)	9 (229)
14 (356)	8 5/8 (219)	7 1/8 (181)	4 1/8 (105)	16 (406)	16 (406)	11 1/4 (286)
16 (406)	9 3/4 (248)	8 1/4 (210)	4 3/4 (121)	18 (457)	18 (457)	13 (330)
18 (457)	10 1/2 (267)	9 1/2 (241)	4 1/4 (108)	20 (508)	20 (508)	13 3/4 (349)
20 (508)	12 3/8 (314)	10 7/8 (276)	4 7/8 (124)	22 (559)	22 (559)	15 3/4 (400)

Inches are measured to the nearest 1/16" (2).
Note: † The RD frame model nominal size is 2" (51) smaller than the duct size it mounts to.
 Example: A size 10 mounts on a 12" (305) duct.



RR Frame
(Round Reducer)

Nom. Size	A	B	C	D	F	H
6 (152)	3 (76)	5 9/16 (141)	1 (25)	6 (152)	8 (203)	6 9/16 (167)
8 (203)	4 3/8 (111)	6 3/4 (171)	1 (25)	8 (203)	10 (254)	7 3/4 (197)
10 (254)	5 3/4 (146)	8 (203)	1 (25)	10 (254)	12 (305)	9 (229)
12 (305)	7 3/8 (187)	8 1/2 (216)	1 (25)	12 (305)	14 (356)	9 1/2 (241)
14 (356)	8 5/8 (219)	9 5/8 (244)	1 5/8 (41)	14 (356)	16 (406)	11 1/4 (286)
16 (406)	9 3/4 (248)	10 3/4 (273)	2 1/4 (57)	16 (406)	18 (457)	13 (330)
18 (457)	10 1/2 (267)	12 (305)	1 3/4 (44)	18 (457)	20 (508)	13 3/4 (349)
20 (508)	12 3/8 (314)	13 3/8 (240)	2 3/8 (60)	20 (508)	22 (559)	15 3/4 (400)

DESCRIPTION:

1. Material: Aluminum construction.
2. Model RPL Round Punkah Louver is a high velocity jet nozzle that is ideally suited for industrial, institutional or commercial applications requiring accurate directional control of a concentrated column of air. The versatile design offers low noise levels, low pressure requirements, easy finger tip adjustment and directional air pattern control ± 35° deflection with full 360° rotation.
3. Frame Type SM – Mounting screws are included.
 Frame Type RD – Frame slides cleanly over end of exposed duct work. Mounting screws are included.
 Frame Type RR – Frame slides cleanly in to end of exposed duct work. Mounting screws are included.

4. GK Foam Gasket is standard (Frame Type SM only).
5. Standard finish is AW Appliance White.

OPTIONS:

- Frame:
- SM Surface Mount (Wall/Ceiling)
 - RD Exposed Round Duct
 - RR Round Reducer
 - APD Aperture Damper (Stainless Steel Damper Hardware)
- Finish:
- SP Special. Specify: _____ .

SCHEDULE TYPE

PROJECT

ENGINEER

CONTRACTOR

Dimensions are in inches (mm).

DATE

3 - 20 - 19

B SERIES

RPL

SUPERSEDES

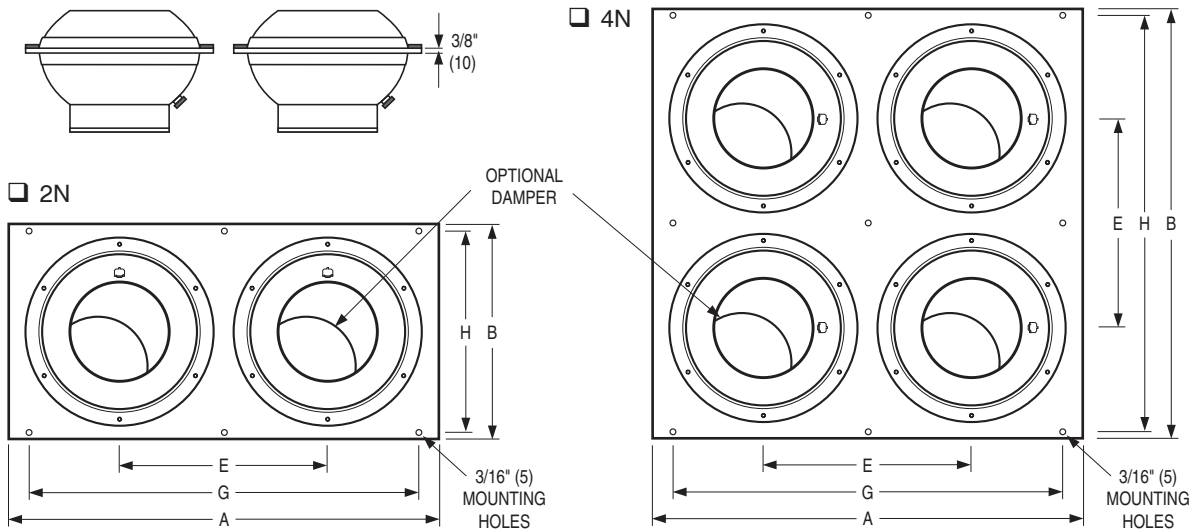
1 - 31 - 19

DRAWING NO.

RPL-1



ROUND PUNKAH LOUVER / JET NOZZLE
PANEL MOUNTED • WALL / CEILING • MULTIPLE
ALUMINUM • HIGH VELOCITY
MODEL: RPLP



Nominal Nozzle Size	Qty. per Panel	A Width (inches/mm)	B Height (inches/mm)	Duct Size (inches/mm)	E	G	H
4	2N	14 (356)	8 (203)	12 x 6 (305 x 152)	7 (178)	11 (279)	7 (178)
6		18 (457)	10 (254)	16 x 8 (406 x 203)	9 (229)	15 (381)	9 (229)
8		24 (610)	12 (305)	22 x 10 (559 x 254)	11 1/2 (292)	21 (533)	11 (279)
10		28 (711)	14 (356)	26 x 12 (660 x 305)	13 1/2 (343)	25 (635)	13 (330)
12		32 (813)	16 (406)	30 x 14 (762 x 356)	15 1/2 (394)	29 (737)	15 (381)
4		4N	14 (356)	14 (356)	12 x 12 (305 x 305)	7 (178)	11 (279)
6	18 (457)		18 (457)	16 x 16 (406 x 406)	9 (229)	15 (381)	17 (432)
8	24 (610)		24 (610)	22 x 22 (559 x 559)	11 1/2 (292)	21 (533)	23 (584)
10	28 (711)		28 (711)	26 x 26 (660 x 660)	13 1/2 (343)	25 (635)	27 (686)
12	32 (813)		32 (813)	30 x 30 (762 x 762)	15 1/2 (394)	29 (737)	31 (787)

Note:

Panel size is 2" (51) larger than the duct size in both dimensions.

Example: A size 24 x 12 uses a duct size of 22 x 10.

Inches are measured to the nearest 1/16" (2).

DESCRIPTION:

1. Material: Aluminum construction.
2. Model RPLP Round Punkah Louver – Panel Mount is a high velocity jet nozzle that is ideally suited for industrial, institutional or commercial applications requiring accurate directional control of a concentrated column of air. The jet nozzles are housed in a square or rectangular shaped panel that has been designed for panel wall ceiling mounted surfaces. The versatile design offers low noise levels, low pressure requirements, easy finger tip adjustment and directional air pattern control ± 35° deflection with full 360° rotation.
3. Nozzle sizes are 4" to 12" (102 – 305).
4. 2 or 4 Nozzles per panel.

5. Surface Mount. Mounting screws are included.
6. GK Foam Gasket is standard.
7. Standard finish is AW Appliance White.

OPTIONS:

APD Aperture Damper (Stainless Steel Damper Hardware)

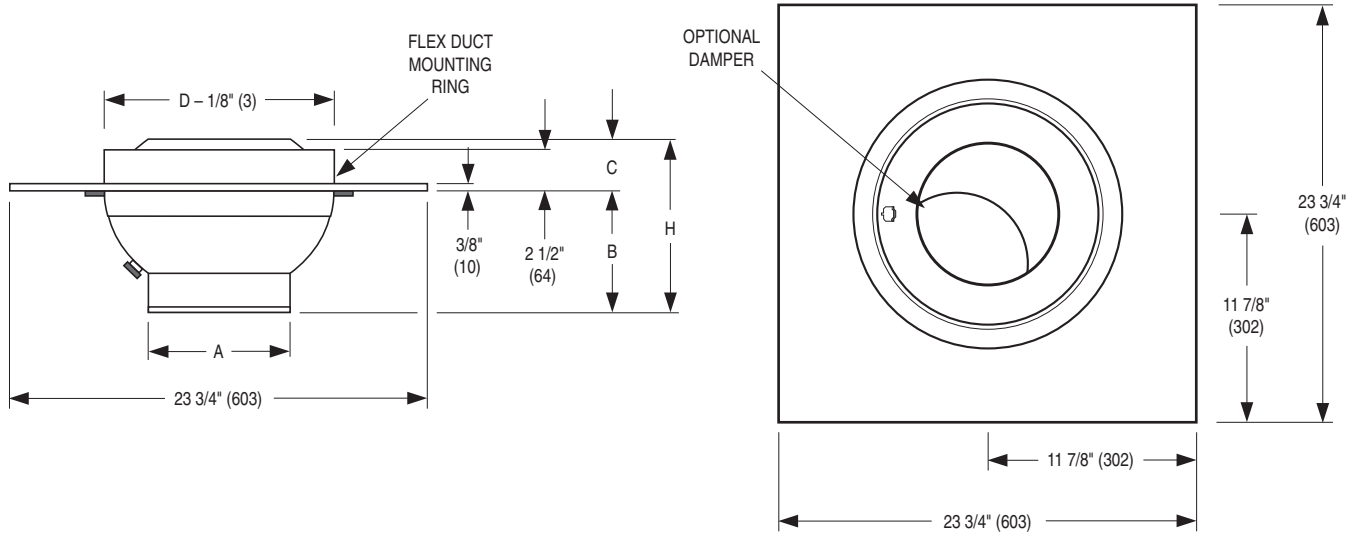
Finish:

SP Special. Specify: _____ .

SCHEDULE TYPE		Dimensions are in inches (mm).			
PROJECT					
ENGINEER	DATE	B SERIES	SUPERSEDES	DRAWING NO.	
CONTRACTOR	3 - 21 - 19	RPL	3 - 7 - 19	RPL-2	



ROUND PUNKAH LOUVER / JET NOZZLE
ALUMINUM • HIGH VELOCITY
PANEL MOUNTED • LAY-IN T-BAR
MODEL: RPLPL



Nominal Size	A	B	C	D (Duct Size)	H
6	3 (76)	3 3/8 (86)	2 1/2 (64)	6 (152)	5 7/8 (149)
8	4 3/8 (111)	4 9/16 (116)	2 1/2 (64)	8 (203)	7 1/16 (179)
10	5 3/4 (146)	5 13/16 (148)	2 9/16 (65)	10 (254)	8 3/8 (213)
12	7 3/8 (187)	6 5/16 (160)	2 11/16 (68)	12 (305)	9 (229)
14	8 5/8 (219)	7 7/16 (189)	3 13/16 (97)	14 (356)	11 1/4 (286)
16	9 3/4 (248)	8 9/16 (217)	4 7/16 (113)	16 (406)	13 (330)
18	10 1/2 (267)	9 13/16 (249)	3 15/16 (100)	18 (457)	13 3/4 (349)
20	12 3/8 (314)	11 3/16 (284)	4 9/16 (116)	20 (508)	15 3/4 (400)

Inches are measured to the nearest 1/16" (2).

DESCRIPTION:

1. Material: Aluminum construction.
2. Model RPLPL Round Punkah Louver – Panel Lay-in is a high velocity jet nozzle that is ideally suited for industrial, institutional or commercial applications requiring accurate directional control of a concentrated column of air. The jet nozzles are housed in a square panel that has been designed for panel lay-in T-Bar ceiling grids. The versatile design offers low noise levels, low pressure requirements, easy finger tip adjustment and directional air pattern control ± 35° deflection with full 360° rotation.
3. GK Foam Gasket is standard.
4. Flex duct mounting collar is included. Install easily in T-Bar ceiling grid.
5. Standard finish is AW Appliance White.

OPTIONS:

- APD Aperture Damper (Stainless Steel Damper Hardware)
- Finish:
- SP Special. Specify: _____ .

SCHEDULE TYPE					Dimensions are in inches (mm).				
PROJECT									
ENGINEER					DATE	B SERIES	SUPERSEDES	DRAWING NO.	
CONTRACTOR					3 - 21 - 19	RPL	3 - 7 - 19	RPL-3	

PERFORMANCE DATA: MODELS RPL AND RPLPL

Nom. Size	Nozzle Velocity, FPM	1000	1500	2000	2500	3000	3500	4000
3	Airflow, CFM	14	22	29	36	43	50	58
	Static Pressure	0.03	0.07	0.13	0.20	0.28	0.39	0.50
	Noise Criteria	—	—	—	19	23	26	30
	Throw	2-4-8	3-6-13	4-8-15	5-11-16	6-12-17	7-13-20	8-14-21
4	Airflow, CFM	22	33	44	55	66	77	88
	Static Pressure	0.03	0.07	0.13	0.20	0.28	0.39	0.50
	Noise Criteria	—	—	—	19	23	26	30
	Throw	3-6-12	4-8-17	6-12-23	8-16-24	9-18-27	10-21-30	12-22-32
6	Airflow, CFM	49	74	98	123	147	172	196
	Static Pressure	0.05	0.12	0.22	0.34	0.49	0.66	0.86
	Noise Criteria	—	—	15	21	25	29	33
	Throw	4-8-16	6-12-23	8-16-27	10-20-30	12-21-32	14-25-36	16-26-38
8	Airflow, CFM	104	157	209	261	313	365	418
	Static Pressure	0.06	0.14	0.24	0.38	0.53	0.70	0.92
	Noise Criteria	—	—	17	24	30	35	38
	Throw	6-11-23	8-17-34	11-23-39	14-28-44	17-31-46	20-35-52	23-38-55
10	Airflow, CFM	180	270	361	451	541	631	721
	Static Pressure	0.07	0.15	0.25	0.39	0.56	0.74	0.96
	Noise Criteria	—	—	21	29	35	40	45
	Throw	7-15-30	11-22-45	15-30-51	19-37-57	22-41-61	26-47-69	30-50-72
12	Airflow, CFM	297	445	593	742	890	1038	1187
	Static Pressure	0.07	0.15	0.26	0.40	0.58	0.78	1.01
	Noise Criteria	—	—	24	32	38	44	47
	Throw	10-19-38	14-29-57	19-38-65	24-48-74	29-52-78	33-60-88	38-64-93
14	Airflow, CFM	406	609	811	1014	1217	1420	1623
	Static Pressure	0.07	0.15	0.26	0.41	0.58	0.79	1.02
	Noise Criteria	—	15	25	33	39	44	48
	Throw	11-22-45	17-33-67	22-45-76	28-56-86	33-61-91	39-70-103	45-75-108
16	Airflow, CFM	518	778	1036	1296	1555	1815	2074
	Static Pressure	0.07	0.14	0.26	0.41	0.58	0.80	1.03
	Noise Criteria	—	16	26	33	39	44	49
	Throw	13-25-50	19-38-76	25-50-86	32-63-97	38-69-103	44-79-117	50-84-122
18	Airflow, CFM	601	902	1202	1503	1804	2105	2406
	Static Pressure	0.06	0.13	0.24	0.37	0.54	0.74	0.96
	Noise Criteria	—	16	26	33	39	44	49
	Throw	14-27-54	20-41-81	27-54-105	34-68-110	41-74-111	47-85-126	54-91-132
20	Airflow, CFM	835	1253	1670	2088	2506	2924	3341
	Static Pressure	0.06	0.12	0.22	0.34	0.49	0.68	0.88
	Noise Criteria	—	17	27	34	40	46	51
	Throw	16-32-64	24-48-96	32-64-110	40-80-123	48-87-131	56-100-148	64-107-155

Performance Notes:

- AIRFLOW CFM:** Standard air density and isothermal conditions.
- STATIC PRESSURE:** Inches of water gauge required.
- NOISE CRITERIA:** Noise Criteria [NC] curve which is not exceeded with a Room Attenuation of 10 dB and based on Sound Power Level, re 10⁻¹² watts.
- THROW:** Projection distance in feet from outlet at which the maximum velocity from outlet has reduced to 400, 200 and 100 fpm respectively.
- NOZZLE VELOCITY:** Nozzle Discharge Velocity in feet per minute [fpm].
- Data derived from tests conducted in accordance with ANSI/ASHRAE Standard 70 – 2006.

PERFORMANCE DATA:

MODEL RPLP

Nom. Size	Nozzle Velocity, FPM	1000	1500	2000	2500	3000	3500	4000
4 [2 Units]	Airflow, CFM	44	66	88	110	132	154	176
	Static Pressure	0.03	0.07	0.13	0.20	0.28	0.39	0.50
	Noise Criteria	<20	<20	<20	22	26	29	33
	Throw	4-8-16	6-12-23	8-16-32	11-22-34	13-26-38	14-28-42	16-31-45
4 [4 Units]	Airflow, CFM	88	132	176	220	264	308	352
	Static Pressure	0.03	0.07	0.13	0.20	0.28	0.39	0.50
	Noise Criteria	<20	<20	21	25	29	32	36
	Throw	6-12-24	8-16-34	12-24-46	16-32-48	18-36-54	20-41-60	24-44-64
6 [2 Units]	Airflow, CFM	98	148	196	246	294	344	392
	Static Pressure	0.05	0.12	0.22	0.34	0.49	0.66	0.86
	Noise Criteria	<20	<20	20	24	28	32	36
	Throw	6-12-24	8-16-31	11-22-38	14-28-42	17-29-45	19-35-50	22-36-53
6 [4 Units]	Airflow, CFM	196	296	392	492	588	688	784
	Static Pressure	0.05	0.12	0.22	0.34	0.49	0.66	0.86
	Noise Criteria	<20	<20	23	27	31	35	39
	Throw	8-16-32	12-24-46	16-32-54	20-40-60	24-42-64	28-50-72	32-52-76
8 [2 Units]	Airflow, CFM	208	314	418	522	626	730	836
	Static Pressure	0.06	0.14	0.24	0.38	0.53	0.70	0.92
	Noise Criteria	<20	<20	20	27	33	38	41
	Throw	8-16-32	11-22-44	15-30-55	19-39-62	24-43-64	28-49-73	32-53-77
8 [4 Units]	Airflow, CFM	416	628	836	1044	1252	1460	1672
	Static Pressure	0.06	0.14	0.24	0.38	0.53	0.70	0.92
	Noise Criteria	<20	<20	23	30	36	41	44
	Throw	12-22-46	16-34-68	22-45-78	28-56-88	34-62-92	40-70-104	46-76-110
10 [2 Units]	Airflow, CFM	360	540	722	902	1082	1262	1442
	Static Pressure	0.07	0.15	0.25	0.39	0.56	0.74	0.96
	Noise Criteria	<20	<20	24	32	38	43	48
	Throw	9-18-36	15-30-61	21-42-71	27-63-80	31-57-85	36-66-97	42-70-101
10 [4 Units]	Airflow, CFM	720	1080	1444	1804	2164	2524	2884
	Static Pressure	0.07	0.15	0.25	0.39	0.56	0.74	0.96
	Noise Criteria	<20	20	27	35	41	46	51
	Throw	14-30-60	22-44-90	30-60-102	38-74-114	44-82-122	52-94-138	60-100-144
12 [2 Units]	Airflow, CFM	594	890	1186	1484	1780	2076	2374
	Static Pressure	0.07	0.15	0.26	0.40	0.58	0.78	1.01
	Noise Criteria	<20	<20	27	35	41	47	50
	Throw	14-27-53	20-41-80	27-53-91	34-67-104	41-73-109	46-84-123	53-90-130
12 [4 Units]	Airflow, CFM	1188	1780	2372	2968	3560	4152	4748
	Static Pressure	0.07	0.15	0.26	0.40	0.58	0.78	1.01
	Noise Criteria	<20	21	30	38	44	50	53
	Throw	20-38-76	28-58-114	38-76-130	48-96-148	58-104-156	66-120-176	76-128-186

Performance Notes:

- AIRFLOW CFM:** Standard air density and isothermal conditions.
- STATIC PRESSURE:** Inches of water gauge required.
- NOISE CRITERIA:** Noise Criteria [NC] curve which is not exceeded with a Room Attenuation of 10 dB and based on Sound Power Level, re 10⁻¹² watts.
- THROW:** Projection distance in feet from outlet at which the maximum velocity from outlet has reduced to 400, 200 and 100 fpm respectively.
- NOZZLE VELOCITY:** Nozzle Discharge Velocity in feet per minute [fpm].
- Data derived from tests conducted in accordance with ANSI/ASHRAE Standard 70 – 2006.