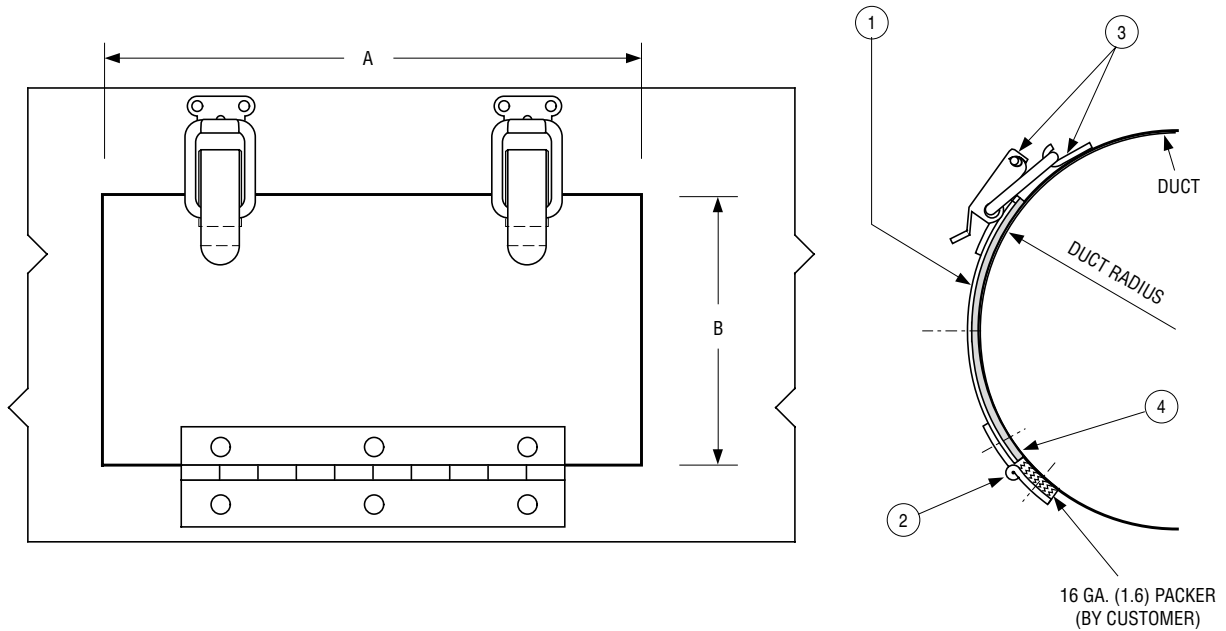




**LOW PRESSURE DUCT ACCESS DOOR  
FOR USE ON ROUND DUCT  
MODEL: 0890**

FOR USE IN LOW PRESSURE DUCT SYSTEMS



DUCT SIZE	DIMENSION "A"	DIMENSION "B"
5 (127)	7 (178)	4 (102)
6 (152)	8 (203)	5 (127)
7 (178)	9 (229)	6 (152)
8 (203)	10 (254)	7 (178)
9 (229)	11 (279)	8 (203)
10 (254)	12 (305)	9 (229)
12 (305)	14 (356)	10 (254)
14 (356)	16 (406)	12 (305)
16 (406)	16 (406)	12 (305)
18 (457)	18 (457)	14 (356)
20 (508)	18 (457)	16 (406)
24 (610)	18 (457)	16 (406)

**MODEL DESCRIPTION:**

Hinged door installs easily onto low pressure round duct providing convenient access. Strike and catch style closure and factory installed gasket ensure positive seal.

**STANDARD CONSTRUCTION:**

1. Duct access door 16 ga. (1.6) galvanized steel.
2. Zinc plated hinge.
3. Strike and catch. Zinc plated steel.
4. Polyethylene gasket.
5. Other sizes are available; contact factory.

<b>SCHEDULE TYPE:</b>	
<b>PROJECT:</b>	
<b>ENGINEER:</b>	
<b>CONTRACTOR:</b>	

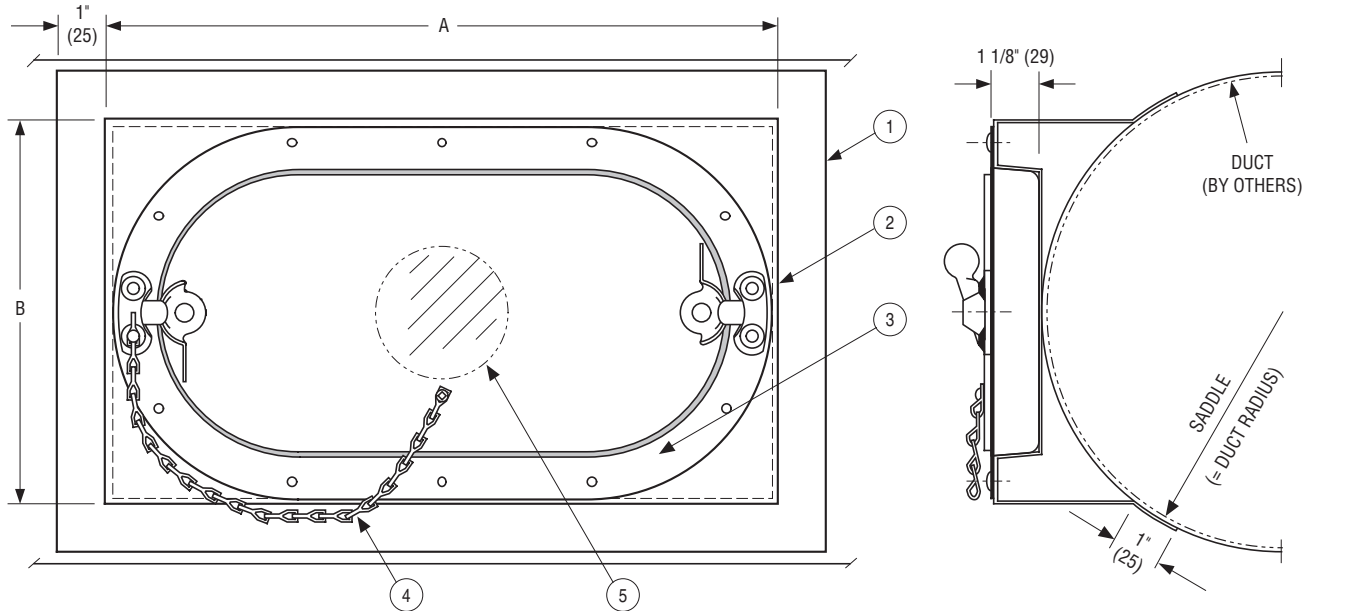
Dimensions are in inches (mm).

DATE	B SERIES	SUPERSEDES	DRAWING NO.
4 - 20 - 04	0800	9 - 93RR	0800-3

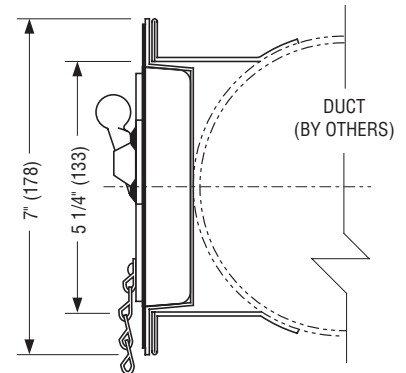


# HIGH PRESSURE TURRET DUCT ACCESS DOOR FOR USE ON ROUND DUCT MODEL: 0895

FOR USE IN LOW, MEDIUM AND HIGH PRESSURE DUCT SYSTEMS



NOMINAL DUCT DIAMETER	ACCESS DOOR SIZE	DIMENSIONS		OPTIONAL VIEW PORT
		A	B	
6 to 12 (152 to 305)	8 x 5 (203 x 127)	10 (254)	7 (178)	N/A
8 to 20 (203 to 508)	12 x 6 (305 x 152)	14 1/4 (362)	8 1/4 (209)	2 3/4 dia. (70) dia.
12 to 24 (305 to 610)	18 x 10 (457 x 254)	20 1/4 (514)	12 1/4 (311)	5 1/2 dia. (140) dia.
16 to 36 (406 to 914)	21 x 14 (533 x 356)	23 1/4 (591)	16 1/4 (413)	5 1/2 dia. (140) dia.
24 to 60 (610 to 1524)	25 x 17 (635 x 432)	27 1/4 (692)	19 1/4 (489)	5 1/2 dia. (140) dia.



TURRET STYLE USED ON 6" (152) DIA. DUCT SIZE ONLY

### MODEL DESCRIPTION:

Factory assembled for mounting on low, medium or high pressure round ducts. Welded and caulked units provide easy mounting and ready access.

### STANDARD CONSTRUCTION:

- 16 gauge (1.6) galvanized steel saddle formed to duct radius.
- Turret box welded to saddle.
- High pressure access door caulked and screwed or riveted to turret.

REFER TO DRAWING 0800-1 FOR DOOR DETAILS.

### OPTIONS:

- SC Safety chain.
- VP Viewport (not available on size 8 x 5 (203 x 127)).

### LEAKAGE INFORMATION:

Tested in conformance to British Standard DW142 Class C. The maximum leakage at 8" w.g. (2 kPa):  
 8" x 5" (203 x 127): 0.036 cfm (1.02 l/min.)  
 12" x 6" (305 x 152): 0.064 cfm (1.8 l/min.)  
 18" x 10" (457 x 254): 0.133 cfm (3.78 l/min.)  
 21" x 14" (533 x 356): 0.206 cfm (5.82 l/min.)  
 25" x 17" (635 x 432): 0.286 cfm (8.1 l/min.)

Dimensions are in inches (mm).

<b>SCHEDULE TYPE:</b>				
<b>PROJECT:</b>				
<b>ENGINEER:</b>	<b>DATE</b>	<b>B SERIES</b>	<b>SUPERSEDES</b>	<b>DRAWING NO.</b>
<b>CONTRACTOR:</b>	4 - 20 - 04	0800	19 - 4 - 00R	0800-4