

**QUALIFICATIONS:**

- **UL 555C CLASSIFIED CEILING DAMPER (File # R9660).**
- **CAN4/ULC-S112.2 Ceiling Firestop Flap Assemblies.**
- **Meets the requirements for NFPA 90A as well as IBC, NBC (Canada) and associated local building codes.**
- **City of New York Board of Standards and Appeals. Cal. No. 460-88-SA.**
- **California State Fire Marshal: Fire Damper Listing No. 3225-0935:0102.**

**DESCRIPTION:**

Ceiling dampers, or ceiling radiation dampers (known as Fire Stop Flaps in Canada), are designed to function as a fire and heat barrier in air duct openings penetrating fire resistive membrane ceilings. Model 0716-4 is for use in square or rectangular applications, in lieu of hinged door type dampers in any UL/ULC floor/ceiling or roof/ceiling assembly with up to a 3 hour fire resistance rating where air ducts are allowed.

Model 0716-4 provides a low profile, dual set of blades design, ideal for installation in tight places that require a fire and heat barrier in air duct openings penetrating fire resistive membrane ceilings.

**STANDARD CONSTRUCTION:**

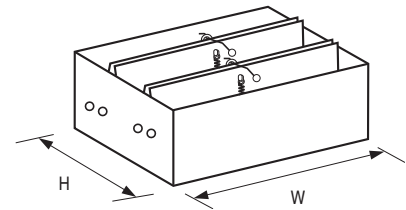
1. **Fusible Link:** UL Listed, 212°F (100°C), standard.
2. **Blades:** 22 ga. (0.85) G60 galvanized steel.
3. **Insulation:** Non-asbestos UL Classified on units over 80 sq. in. (516 sq. cm) finished size, std. Not required on smaller units.
4. **Frame:** Roll-formed 22 ga. (0.85) G60 galvanized steel.
5. **Duct Drop:** By others.

**Model 0716-4 Sizes (Duct W x H):**

Minimum	Maximum
12" x 6" (305 x 152)	24" x 24" (610 x 610)

**OPTION:**

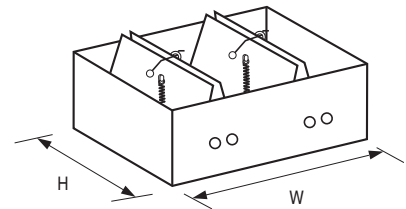
1. Non-standard temperature U.L. Listed fusible link.
  - 165** 165°F (74°C)



**DETAIL 1**

(H = 12" [305] or more)

Units manufactured with blade length on long dimension (W) except where short dimension (H) is less than 12" (305). (See Detail 1 above).



**DETAIL 2**

(H = less than 12" [305])

If short dimension (H) is less than 12" (305), units are manufactured with blade length on short dimension. (See Detail 2 above).

For installation instructions, see IOM-CRDSINST and IOM-CRDTBINST.

Dimensions are in inches (mm).

<b>SCHEDULE TYPE:</b>				
<b>PROJECT:</b>				
<b>ENGINEER:</b>	<b>DATE</b>	<b>B SERIES</b>	<b>SUPERSEDES</b>	<b>DRAWING NO.</b>
<b>CONTRACTOR:</b>	4 - 28 - 14	0700	12 - 12 - 11	0700-4