



**FAN POWERED CHILLED WATER TERMINAL UNIT**  
**SENSIBLE COOLING (DOAS) • CONSTANT OR VARIABLE VOLUME**  
**MODELS: 33SZ, 33SZE AND 33SZW**  
**UNIT SIZE 30 (LOW PROFILE)**  
**WITH 90° LINE VOLTAGE ENCLOSURE (FN2 OPTION)**

**DESCRIPTION:**

- Sensible cooling coil on the induced air inlet handles zone sensible load. Opposite side to controls location. Aluminum ripple fins (10 FPI) and 1/2" (13) copper tubes. Hand of coil connection is determined looking in direction of airflow (RH shown).
- 20 ga. (1.00) galvanized steel construction.
- 16 ga. (1.61) galvanized steel inclined opposed blade damper. 45° rotation. CW to close.
- Ultra-high efficiency ECM fan motor. EPIC fan volume controller.
- 1/2" (13) dual density fiberglass installation, exposed edge coated to prevent air erosion. Meets requirements of NFPA 90A and UL 181.
- Access panels top and bottom.
- Multi-point averaging diamond flow sensor.
- Discharge opening designed for flanged duct connection.
- Single point electrical connection.
- Low voltage NEMA 1 type enclosure for factory mounted DDC controls.
- FN2 line voltage enclosure incorporates a hinged access door opening upstream that helps ensure NEC clearance requirements and reduces footprint.
- Controls mounted as standard on RH side as shown. Unit size 30 ordered with LH controls (optional) is inverted and discharge duct hanging elevation will therefore change.
- Galvanized steel drip pan integral to sensible coil.

**OPTIONS:**

**CW Coil:**

- 2-Row  4-Row  6-Row
- Condensate Sensor.

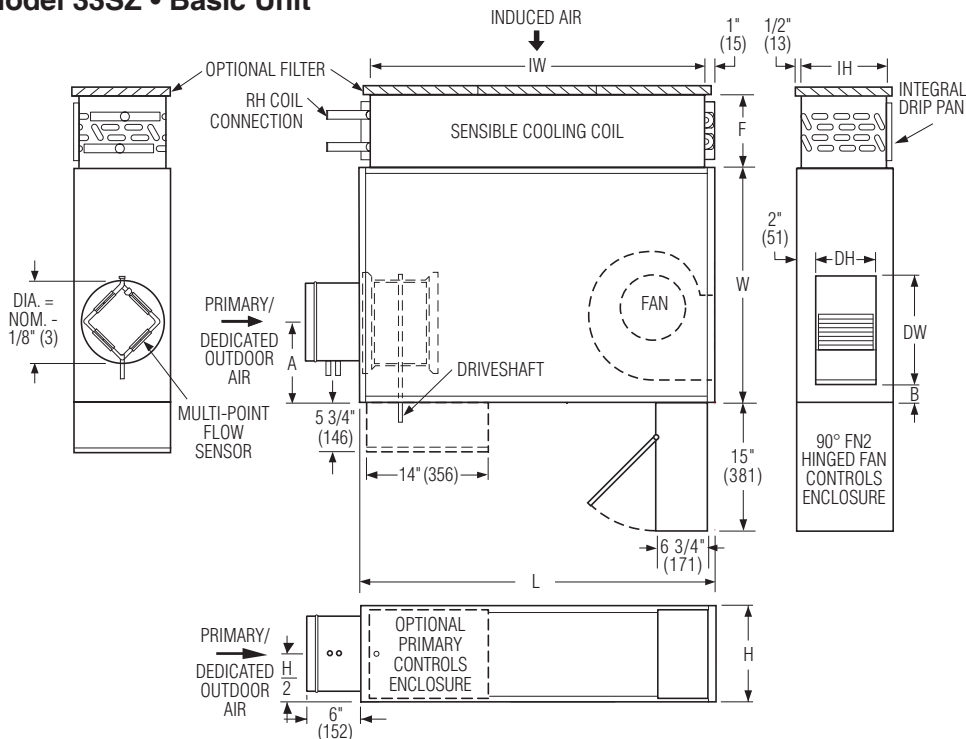
**Coil Connections:**

- Right Hand (Default).
- Left Hand.

**Liner:**

- Fiber-free liner.
- Perforated metal liner.
- Solid metal liner.
- Steri-liner.
- Steri-liner w/perforated liner.

**Model 33SZ • Basic Unit**



**Dimensional Data**

Unit Size	Inlet Size	W	H	L	A	B	Cooling Coil IW x IH	F	Outlet Discharge DW x DH	Filter Size
30	4, 5, 6, 8 (102, 127, 152, 203)	26 1/2 (673)	11 (279)	40 1/4 (1022)	8 (203)	2 (51)	36 x 8 3/4 (914 x 222)	2 Row: 5 1/8 (130) 4 Row: 7 5/16 (186) 6 Row: 9 1/2 (241)	12 3/8 x 6 7/8 (314 x 175)	38 x 10 (965 x 254)

**Electrical Data**

Unit Size	EPIC ECM Motor FLA				
	Motor HP	120V	208V	240V	277V
30	*	7.5	5.0	5.0	4.9

**CW Coil O.D. Sweat Connections**

Unit Size	No. of Row
30	2, 4, & 6
30	7/8" (22)

\* The EPIC ECM is a variable horsepower motor. Refer to Selectworks schedule for actual power consumption. FLA = Full load amperage. All motors are single phase/60 Hz.

**Filter:**

- 1" (25) Throwaway.
- 2" (51) Pleated MERV 8.
- 2" (51) Pleated MERV 13.
- Ducted Return Filter Rack (See submittal 33SZ-FR).

**Electrical:**

- LH Controls enclosure
- Toggle disconnect switch.
- FN3 – Remote line voltage enclosure.
- Motor fusing.

**Others:**

- Hanger brackets.
- 1/4-turn fasteners (access panel).
- Special Features.
- Induced Air Silencer (See submittal 33SZ-DSI).



<b>SCHEDULE TYPE:</b>		<b>DATE</b>	<b>B SERIES</b>	<b>SUPERSEDES</b>	<b>DRAWING NO.</b>
<b>PROJECT:</b>		3 - 22 - 18	3300	8 - 3 - 17	33SZ-3
<b>ENGINEER:</b>					
<b>CONTRACTOR:</b>					



**FAN POWERED CHILLED WATER TERMINAL UNIT**  
**SENSIBLE COOLING (DOAS) • CONSTANT OR VARIABLE VOLUME**  
**MODELS: 33SZ, 33SZE AND 33SZW**  
**UNIT SIZE 30 (LOW PROFILE)**  
**WITH 90° LINE VOLTAGE ENCLOSURE (FN2 OPTION)**

**Hot Water Coil Section**  
**Model 33SZW**

**Standard Features:**

- Coil section installed on unit discharge.
- 1/2" (13) copper tubes.
- Aluminum ripple fins (10 FPI).
- Sweat Connections: One row: 1/2" (13) O.D. male solder. Two row: 5/8" (16) O.D. male solder.
- Flanged outlet duct connection.

**Coil Rows:**

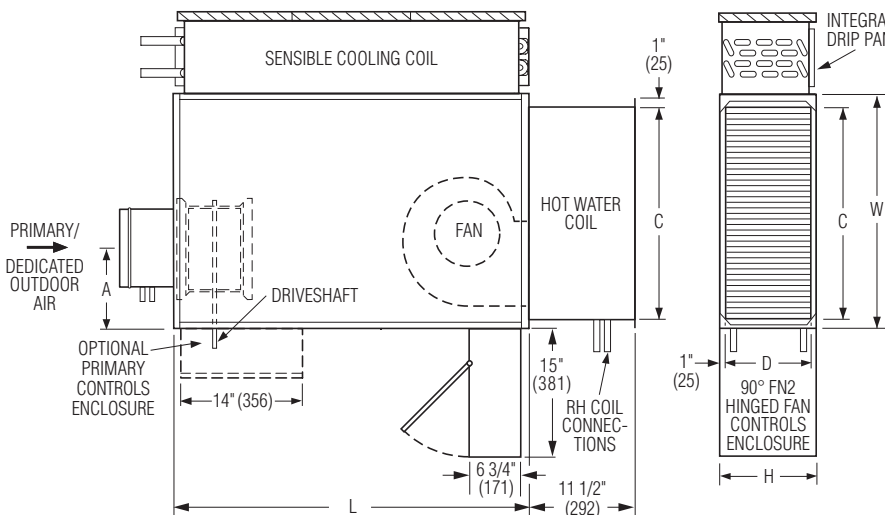
- 1-Row    2-Row

**Coil Hand Connections:**

(Looking in direction of airflow).

- Right Hand (illustrated). Standard.  
 Left Hand. Optional.

Heating coil, sensible coil and controls enclosure orientation must all be specified separately.



**Dimensional Data**

Unit Size	W	H	L	Outlet Duct Size C x D
30	26 1/2 (673)	11 (279)	40 1/4 (1022)	24 x 8 3/4 (610 x 222)

**Electric Coil Section**  
**Model 33SZE**

**Standard Features:**

- Unique hinged heater design permits easy access, removal and replacement of heater element without disturbing ductwork.
- Coil installed on unit discharge.
- Insulated coil element wrapper.
- Automatic reset high limit cut-outs (one per element).
- Single point electrical connection for entire terminal unit.
- Magnetic contactors per stage.
- Class A 80/20 Ni/Cr wire.
- Electronic Fan Interlock Relay.
- Flanged outlet duct connection.
- Terminal unit with coil is ETL listed as on assembly.
- Controls mounted as standard on RH side as shown. Terminals ordered with L.H. controls (optional) are inverted.

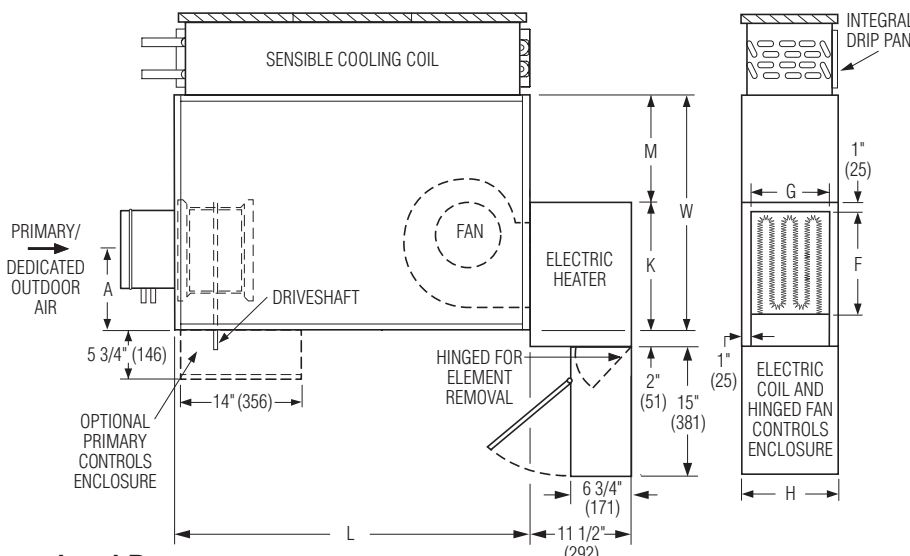
**Voltage:**

Single phase, 60 Hz.

- 120V    208V  
 240V    277V

Three phase, 60 Hz.

- 208V    480V (4 wire wye).  
 600V (dual point connection).  
 \_\_\_\_\_



**Dimensional Data**

Unit Size	W	H	L	K	M	Outlet Duct Size F x G
30	26 1/2 (673)	11 (279)	40 1/4 (1022)	15 3/8 (391)	11 1/8 (283)	12 3/8 x 9 (314 x 229)

**Electric Coil Options:**

- SCR control.
- SCR control with discharge temperature control.
- Toggle disconnect (includes fan).
- Door interlock disconnect switch.
- Quiet contactors.
- Main line fusing.
- Dust tight construction.
- Manual Reset secondary thermal cut out.
- Positive Pressure airflow switch.

<b>SCHEDULE TYPE:</b>				
<b>PROJECT:</b>				
<b>ENGINEER:</b>	<b>DATE</b>	<b>B SERIES</b>	<b>SUPERSEDES</b>	<b>DRAWING NO</b>
<b>CONTRACTOR:</b>	3 - 22 - 18	3300	8 - 3 - 17	33SZ-3