



FAN POWERED CHILLED WATER TERMINAL UNIT
SENSIBLE COOLING (DOAS) • CONSTANT OR VARIABLE VOLUME
MODELS: 33SZ, 33SE AND 33SZW
UNIT SIZES: 40 AND 50
WITH 90° LINE VOLTAGE ENCLOSURE (FN2 OPTION)

DESCRIPTION:

- Sensible cooling coil on the induced air inlet handles zone sensible load. Opposite side to controls location. Aluminum ripple fins (10 FPI) and 1/2" (13) copper tubes. Hand of coil connection is determined looking in direction of airflow (RH shown).
- 18 ga. (1.31) galvanized steel channel frame with 20 ga. (1.00) casing components.
- 16 ga. (1.61) galvanized steel inclined opposed blade damper. 45° rotation. CW to close.
- Ultra-high efficiency ECM, fan motor. EPIC fan volume controller.
- 3/4" (19) dual density fiberglass installation, exposed edge coated to prevent air erosion. Meets requirements of NFPA 90A and UL 181.
- Access panels top and bottom.
- Multi-point averaging diamond flow sensor.
- Discharge opening for flanged duct connection.
- Single point electrical connection.
- Low voltage NEMA 1 type enclosure for factory mounted DDC controls.
- FN2 line voltage enclosure incorporates a hinged access door opening upstream that helps ensure NEC clearance requirements and reduces footprint.
- Controls mounted as standard on RH side as shown. Terminals ordered with LH controls (optional) are inverted and discharge duct hanging elevation will therefore change.
- Galvanized steel drip pan integral to sensible coil.
- Filter Frame and 1" (25) disposable filter.

OPTIONS:

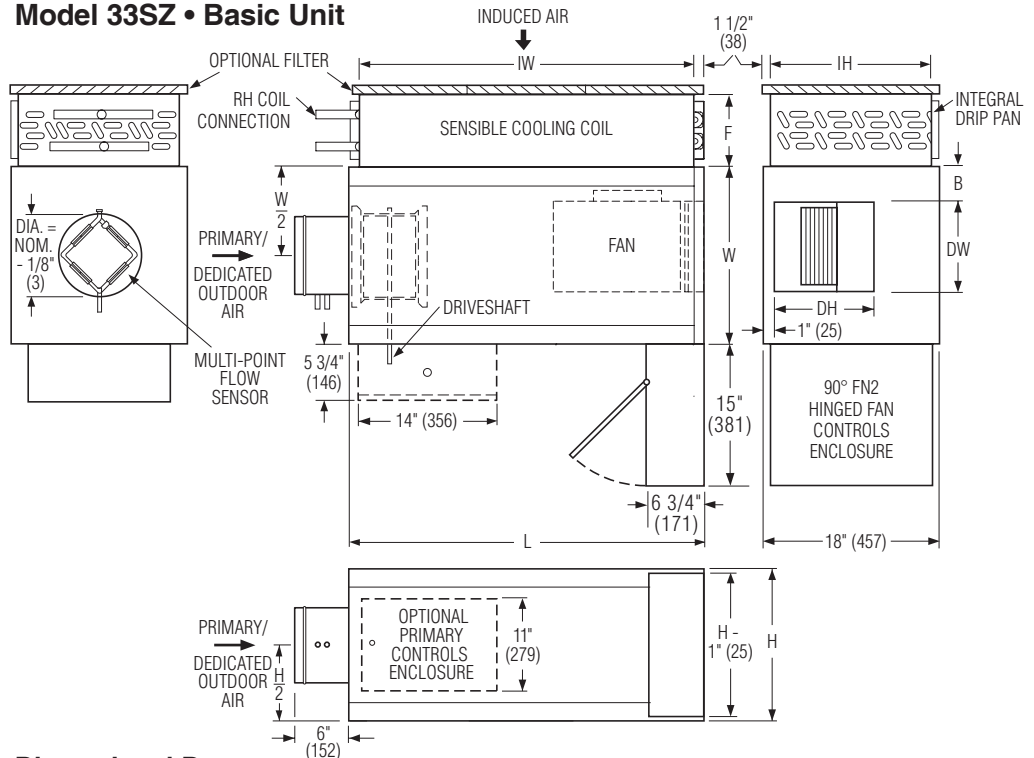
CW Coil:

- 2-Row 4-Row 6-Row
- Left Hand coil connections.
- Condensate sensor.

Liner:

- Fiber-free liner.
- Perforated metal liner.
- Solid metal liner.
- Steri-liner.
- Steri-liner w/perforated liner.

Model 33SZ • Basic Unit



Dimensional Data

Unit Size	Inlet Size	W	H	L	B	Cooling Coil IW x IH	F	Outlet Discharge DW x DH	Filter Size
40	4, 5, 6, 8, 10 (102, 127, 152, 203, 254)	18 (457)	18 (457)	36 (914)	3 1/2 (89)	31 x 15 (787 x 381)	2 Row: 5 1/8 (130)	9 1/8 x 10 1/4 (232 x 260)	33 x 16 (838 x 406)
							4 Row: 7 5/16 (186)		
50	5, 6, 8, 10, 12 (127, 152, 203, 254, 305)	26 (660)	18 (457)	41 (1041)	5 (127)	36 x 15 (914 x 381)	6 Row: 9 1/2 (241)	13 1/8 x 11 1/4 (333 x 286)	38 x 16 (965 x 406)

Electrical Data

Unit Size	EPIC ECM Motor FLA				
	Motor HP	120V	208V	240V	277V
40	*	6.5	4.3	4.2	4.2
50	*	9.5	6.4	6.2	6.0

CW Coil O.D. Sweat Connections

Unit Size	No. of Row
	2, 4, & 6
40	7/8" (22)
50	7/8" (22)



* The EPIC ECM is a variable horsepower motor. Refer to Selectworks schedule for actual power consumption. FLA = Full load amperage. All motors are single phase/60 Hz.

Filter:

- 1" (25) Throwaway.
- 2" (51) Pleated MERV 8.
- 2" (51) Pleated MERV 13.
- Ducted Return Filter Rack (See submittal 33SZ-FR).

Electrical:

- LH Controls enclosure
- Toggle disconnect switch.
- FN3 - Remote line voltage enclosure.
- Motor fusing.

Others:

- Hanger brackets.
- Induced Air Silencer (See submittal 33SZ-DSI).

For heat options; see page 2.
 Dimensions are in inches (mm).

SCHEDULE TYPE:				
PROJECT:				
ENGINEER:	DATE	B SERIES	SUPERSEDES	DRAWING NO.
CONTRACTOR:	7 - 11 - 17	3300	3 - 30 - 17	33SZ-4



FAN POWERED CHILLED WATER TERMINAL UNIT
SENSIBLE COOLING (DOAS) • CONSTANT OR VARIABLE VOLUME
MODELS: 33SZE AND 33SZW
UNIT SIZES: 40 AND 50
WITH 90° LINE VOLTAGE ENCLOSURE (FN2 OPTION)

Hot Water Coil Section
Model 33SZW

Standard Features:

- Coil section installed on unit discharge.
- 1/2" (13) copper tubes.
- Aluminum ripple fins @ 10 FPI.
- Sweat Connections:
 Size 40 one row: 1/2" (13) O.D. male solder. All others: 7/8" (22) O.D. male solder.
- Flanged outlet duct connection.

Coil Rows:

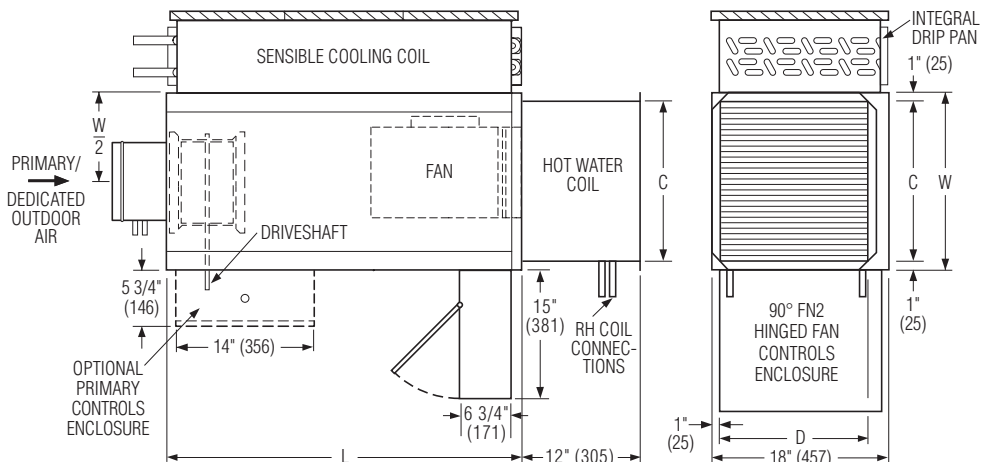
- 1-Row 2-Row

Coil Hand Connections:

(Looking in direction of airflow).

- Right Hand (illustrated). Standard.
 Left Hand. Optional.

Heating coil, sensible coil and controls enclosure orientation must all be specified separately.



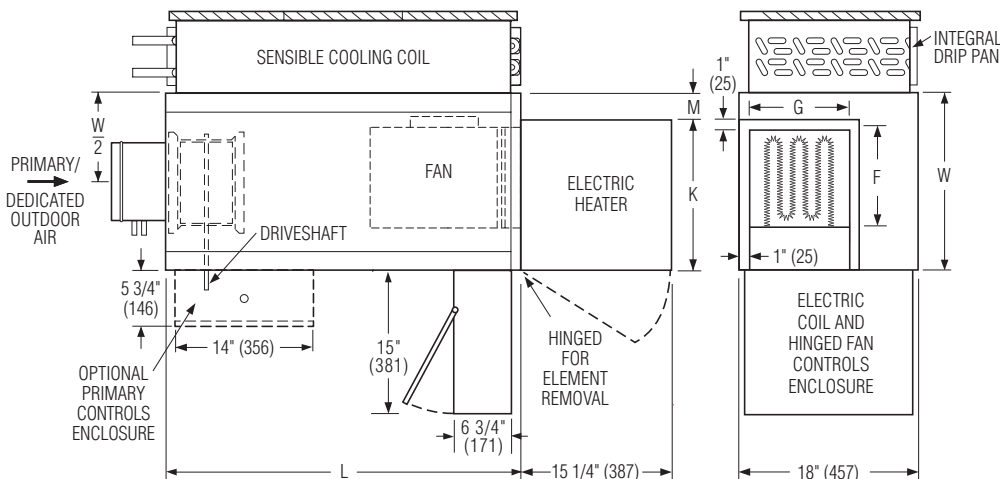
Dimensional Data

Unit Size	W	L	Outlet Duct Size C x D
40	18 (457)	36 (914)	16 x 15 (406 x 381)
50	26 (660)	41 (1041)	24 x 15 (610 x 381)

Electric Coil Section
Model 33SZE

Standard Features:

- Unique hinged heater design permits easy access, removal and replacement of heater element without disturbing ductwork.
- Coil installed on unit discharge.
- Insulated coil element wrapper.
- Automatic reset high limit cut-outs (one per element).
- Single point electrical connection for entire terminal unit.
- Magnetic contactors per stage.
- Class A 80/20 Ni/Cr wire.
- Electronic Fan Interlock Relay.
- Flanged outlet duct connection.
- Terminal unit with coil is ETL listed as on assembly.
- Controls mounted as standard on RH side as shown. Terminals ordered with L.H. controls (optional) are inverted and discharge duct hanging elevation will change.



Dimensional Data

Unit Size	W	L	K	M	Outlet Duct Size F x G
40	18 (457)	36 (914)	15 1/2 (394)	2 1/2 (64)	10 1/4 x 10 1/2 (260 x 267)
50	26 (660)	41 (1041)	22 (559)	4 (102)	14 1/4 x 11 3/4 (362 x 298)

Voltage:

- Single phase, 60 Hz.
 120V 208V
 240V 277V
 Three phase, 60 Hz.
 208V 480V (4 wire wye)
 600V (dual point connection).

Electric Coil Options:

- SCR control.
- SCR control with discharge temperature control.
- Toggle disconnect (includes fan).
- Door interlock disconnect switch.
- Quiet contactors.
- Main line fusing.
- Dust tight construction.
- Manual Reset secondary thermal cut out.
- Positive Pressure airflow switch.

SCHEDULE TYPE:

PROJECT:

ENGINEER:

CONTRACTOR:

Page 2 of 2.
 Dimensions are in inches (mm).

DATE	B SERIES	SUPERSEDES	DRAWING NO.
7 - 11 - 17	3300	3 - 30 - 17	33SZ-4