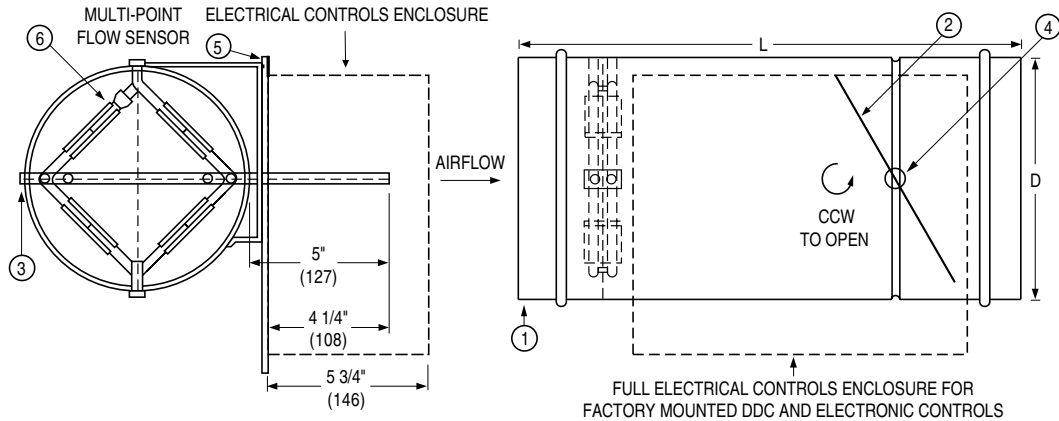




ROUND RETROFIT TERMINAL UNIT
PRESSURE INDEPENDENT • VARIABLE AIR VOLUME
EXTERNAL
TYPE 304 STAINLESS STEEL
MODELS: 36VRR-SS



Dimensional Data

| Unit Size | Airflow Range cfm (l/s) | D | L |
|-----------|----------------------------|--------------|----------|
| 4 | 0 – 225 (0 – 106) | 3 7/8 (98) | 22 (559) |
| 5 | 0 – 400 (0 – 189) | 4 7/8 (124) | 22 (559) |
| 6 | 0 – 550 (0 – 260) | 5 7/8 (149) | 18 (457) |
| 7 | 0 – 800 (0 – 378) | 6 7/8 (175) | 18 (457) |
| 8 | 0 – 1100 (0 – 579) | 7 7/8 (200) | 18 (457) |
| 9 | 0 – 1400 (0 – 661) | 8 7/8 (225) | 20 (508) |
| 10 | 0 – 1840 (0 – 868) | 9 7/8 (251) | 20 (508) |
| 12 | 0 – 2500 (0 – 1081) | 11 7/8 (302) | 20 (508) |
| 14 | 0 – 3370 (0 – 1590) | 13 7/8 (352) | 22 (559) |
| 16 | 0 – 4525 (0 – 2135) | 15 7/8 (403) | 22 (559) |

Standard Features:

1. Casing: 22 ga. (0.86), type 304 stainless steel with stiffening beads.
2. Blade: Two layers of 22 ga. (0.86), type 304 stainless steel laminated together (equivalent to 16 gauge) with a cross-linked polyethylene peripheral gasket for tight shut-off. 90° rotation, CCW to open. Damper leakage is less than 2% of nominal CFM @ 6" w.g. as tested in accordance with ANSI/ASHRAE Standard 130.
3. Bearings: Type 304 stainless steel.
4. Drive Shaft/Axles: 1/2" (13) diameter type 304 stainless steel, double-bolted to blades. Indicator mark on the end of the shaft to show damper position.
5. Controls enclosure: A 20 ga. (1.00) corrosion-resistant steel enclosure to enclose all controls is available and is supplied as standard when controls are factory mounted. Exact size and location may vary dependent upon controls.

6. Multi-point averaging flow sensor: Type 304 stainless steel. Gauge taps are provided for field balancing when controls are factory mounted.
7. Right-hand control location is standard (as shown). Left hand is optional.

Controls:

See separate submittal.

Options and Accessories:

- 24 VAC Control transformer.
- Toggle disconnect switch.

| | | | | | |
|-----------------------|-------------|-------------------------------|-------------------|--------------------|--|
| SCHEDULE TYPE: | | Dimensions are in inches (mm) | | | |
| PROJECT: | | | | | |
| ENGINEER: | DATE | B SERIES | SUPERSEDES | DRAWING NO. | |
| CONTRACTOR: | 3 - 30 - 17 | 3600 | 8 - 20 - 08 | 36VRR-2 | |