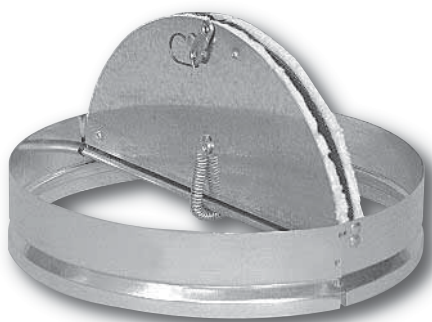


MODELS 0755, 0756(D) & 0757(D) FOR WOOD TRUSS CEILING ASSEMBLIES

Models 0755, 0756(D) and 0757(D) Ceiling Radiation Dampers have been designed and tested for simple installation in specific UL design wood truss ceiling assemblies. They are UL Classified for use in specific 1 hour rated UL floor/ceiling and roof/ceiling designs. Model 0755 ships complete with thermal blanket and top inlet round duct connection. Model Series 0756 features a factory sheet metal plenum for steel grille/diffuser mount or ducted applications with duct collar(s), Model 0756D. Model 0757 is designed for steel grille/diffuser mount applications or ducted applications, Model 0757D, with field installed steel or fiberglass plenums (by others).



Models 0755, 0756, 0757 & 0757D (L to R)



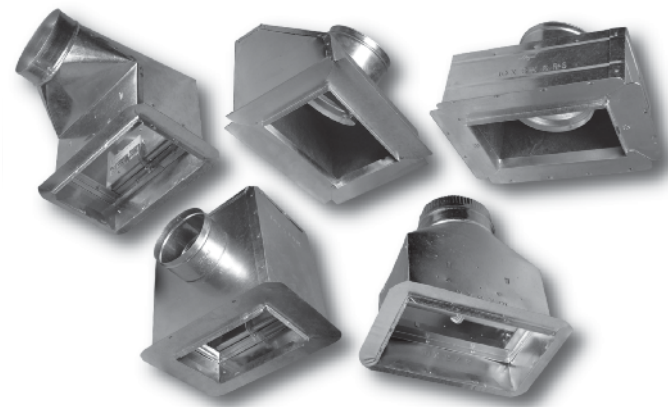
Model 0763

MODEL 0763 FOR WOOD TRUSS CEILING ASSEMBLIES

Models 0763 Ceiling Radiation Dampers have been designed and tested for simple installation in specific UL design wood truss ceiling assemblies. They are UL Classified for use in 1 hour rated UL floor/ceiling design numbers L550/L562/L574/L579/L585/M503 and roof/ceiling design numbers P531/P538/P545/P547/P552. Model 0763 ships complete with thermal blanket and top inlet round duct connection. Model 0763 is designed to mount inside a field supplied internally insulated steel plenum (by others) that accommodates a steel grille, register or diffuser, by Nailor or by others.

MODELS 0758, 0759, 0760, 0761 & 0762 FOR WOOD TRUSS CEILING ASSEMBLIES

Models 0758 thru 0762 register boxes with integral ceiling dampers have been specifically designed and tested to provide protection and simple installation in specific UL design wood truss ceiling assemblies. Model 0758 features a 90° side inlet (tapered); Model 0759 features a 90° side inlet and is insulated. Model 0760 is insulated with a 45° inlet; Model 0761 features a top inlet; Model 0762 is insulated with a top inlet.



Models 0758, 0759, 0760, 0761, 0762 (L to R)

CEILING DAMPER BASICS

Definition of a Ceiling Damper (per NFPA Standard 90A):

“A device installed to limit radiant heat transfer through an air outlet or air inlet opening in the ceiling of a floor-or roof-ceiling assembly having not less than a 1 hour fire resistance rating.”

What is the difference between a Ceiling Damper and a standard Fire Damper?

In order to comprehend the difference we must first understand some of the theory behind fire-rated ceilings. A fire-rated ceiling’s primary function is to protect the structure above it from excessive heat and potential subsequent collapse by providing a fire and heat retardant barrier between the fire area and the structural floor above.

Without any openings in the fire-rated ceiling, it would perform as designed by limiting the transfer of heat through the floor above it. Problems arise when we pierce the protective ceiling with big holes to accommodate environmental control devices such as grilles and diffusers. To close these openings should a fire occur, devices called Ceiling Dampers (also commonly called radiation dampers or firestop flaps in Canada) have been developed. If the openings were to remain unobstructed during a fire, generated heat would tend to rapidly flow through in concentration due to a ‘funnel effect’ created at the openings as the hot combustion gases expand and rise. This focuses the intense heat into the structure area directly above the openings, potentially causing severe structural damage (See Figure 1). Ceiling dampers are specifically designed to protect against this phenomenon by firstly, closing the opening to stop any air flow and secondly, by reducing the amount of heat that is conducted and, most importantly, radiated through the device. This is most important, as a regular fire damper although fine for stopping flame and migratory air flow, is virtually transparent to heat and therefore ineffective in this application.

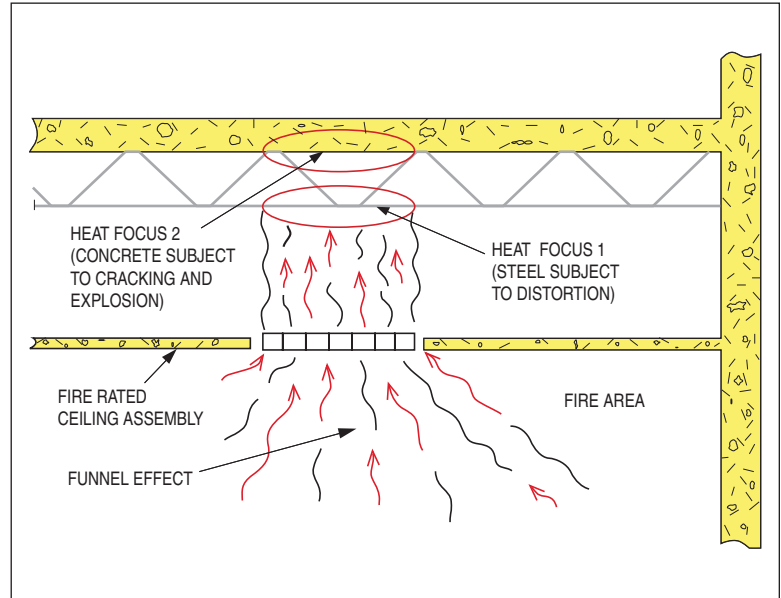


FIGURE 1

- Ceiling Dampers are tested by Underwriter’s Laboratories to the strict criteria of UL 555C, Safety Standard for Ceiling Dampers which includes tests for:
 1. Fire Endurance
 2. Closing Reliability
 3. Salt-Spray Exposure
 4. Spring Closing Force (if applicable)
- Ceiling Dampers are not assigned hourly ratings themselves, but rather are listed for use as a component in an assembly designated for use in fire resistance assemblies having specific hourly ratings.
- All Nailor Ceiling Dampers are classified (Category CABS/CABS7) for use in any UL floor/ceiling or roof/ceiling restrained or unrestrained type assembly with up to a 3 hour fire resistance rating.

For a more in depth look into ceiling dampers, see pages C6 – C9.

LOOKING TO SAVE TIME, MONEY AND HASSLES?

As an alternative to assembling separate components,


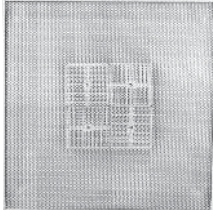
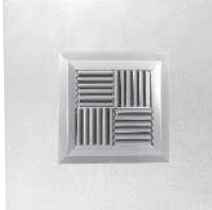

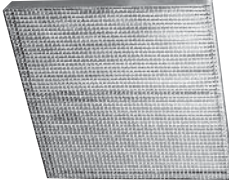
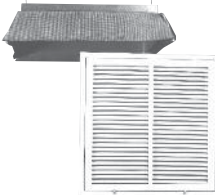
LOOK TO NAILOR FIRE-RATED DIFFUSER AND GRILLE PACKAGES.

As a manufacturer of both **Air Distribution Products** (grilles, diffusers, etc.) and **Air Control Products** (fire dampers, control dampers, louvers, etc.) Nailor can offer **Fire-Rated Packages** as an alternative to assembling separate components from potential separate manufacturers. Nailor is unique in that we can supply **Fire-Rated Packages** at a competitive price, all manufactured at the same facilities for fast lead times and guaranteed Nailor quality . . . no out-sourcing like other major manufacturers.

FEATURES AND BENEFITS:

- Complete package, including ceiling damper, grille, diffuser etc., factory assembled to save on installation **time** (and **money!**) and ensures proper assembly.
- Wide variety of quality Nailor diffuser and grille styles to choose from.
- UL and ULC Classified assemblies for use in restrained or unrestrained ceilings incorporating an exposed grid with up to a 3 hour rating.
- Surface Mount package available for hard ceilings.
- Approved for use with Class 0 or 1 Flexible Duct.
- Ductless Return Air grilles can be installed with no connecting ductwork, ideal for use when ceiling space is used for return air.

SOME OF THE NAILOR FIRE-RATED PACKAGES AVAILABLE:

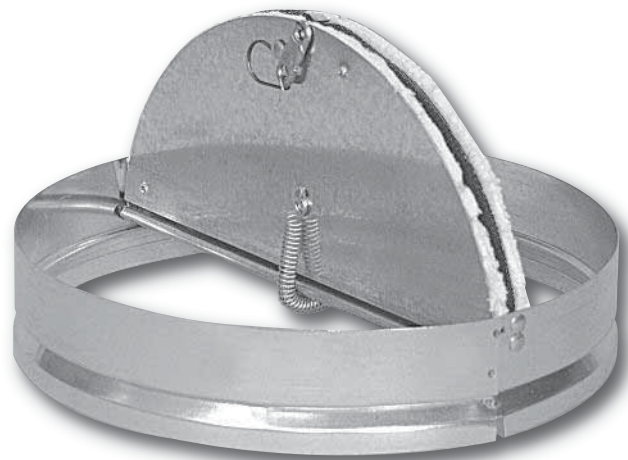
 <p>RNS DIFFUSER SERIES 4000</p>	 <p>PERFORATED FACE SERIES 4000</p>	 <p>MODULAR CORE SERIES 7500 FRD</p>
 <p>PLENUM SLOT SERIES 5500</p>	 <p>EGGCRATE OR PERFORATED DUCTLESS RETURNS SERIES 4100</p>	 <p>LOUVER FACE DUCTLESS RETURNS SERIES 4100</p>

SEE THE NAILOR AIR DISTRIBUTION PRODUCTS CATALOG FOR A COMPLETE SELECTION OF FIRE-RATED PACKAGES.

- UL 263 CLASSIFIED
- INSULATED STEEL PLENUM BY OTHERS
- GRILLE/DIFFUSER MOUNT

Models:

0763 Grille/Diffuser Mount



Model 0763

Model 0763 Ceiling Radiation Dampers have been designed for use in a field supplied insulated steel plenum (by others) and tested for simple installation in specific wood truss ceiling assemblies. They are UL Classified for use in specific 1 hour rated UL floor/ceiling designs. The field supplied plenum (by others) is designed to accommodate a steel grille/diffuser for applications where the plenum terminates at the ceiling.

QUALIFICATIONS:

- **UL 263 CLASSIFIED CEILING RADIATION DAMPER. Category CABS. (File # R9660).**
- **1 hour rated for use in UL floor/ceiling design numbers L550/L562/L574/L579/L585/M503 and roof/ceiling design numbers P531/P538/P545/P547/P552.**
- **Meets NFPA 90A requirements.**

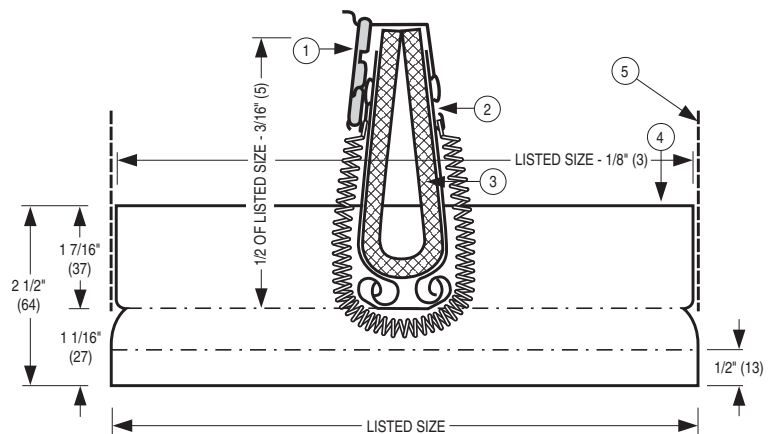
MODEL: 0763 GRILLE/DIFFUSER MOUNT

STANDARD CONSTRUCTION:

1. UL Listed Fusible Link, 212°F (100°C) is standard.
2. Blades: 22 ga. (0.85) G60 roll-formed galvanized steel.
3. Blade Insulation: Non-asbestos UL Classified.
4. Damper Frame: 22 ga. (0.85) G60 galvanized steel.
5. Plenum Collar (by others).

COMMON OPTIONS:

- 165°F (74°C) UL Listed fusible link.
- Installation Support Angles. 26" (660) long:
ISA 2 @ 3/4" x 3/4" x 16 ga. (19 x 19 x 1.6).
ISB 2 @ 1 1/2" x 1 1/2" x 22 ga. (38 x 38 x 0.85).

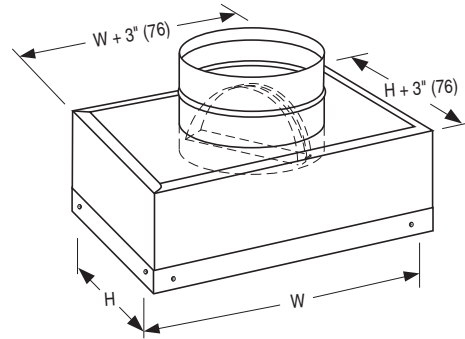
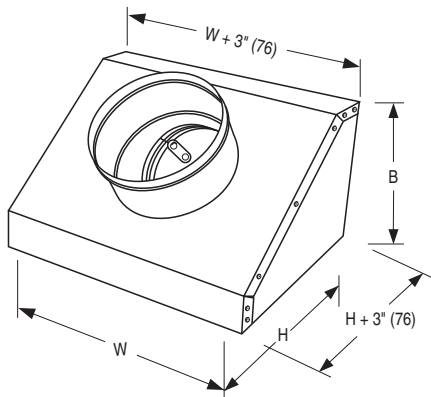
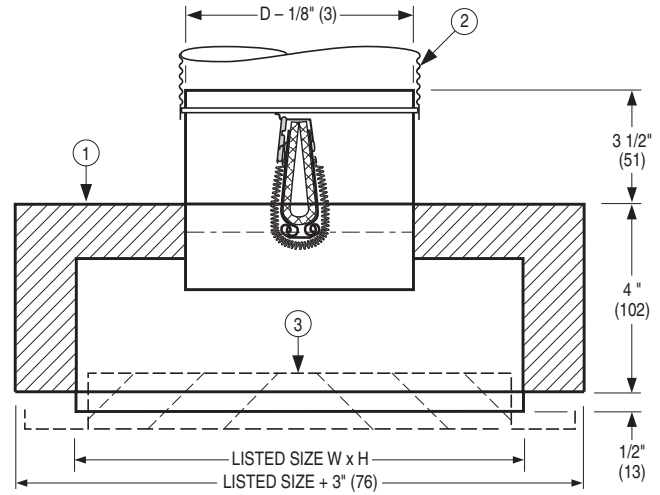
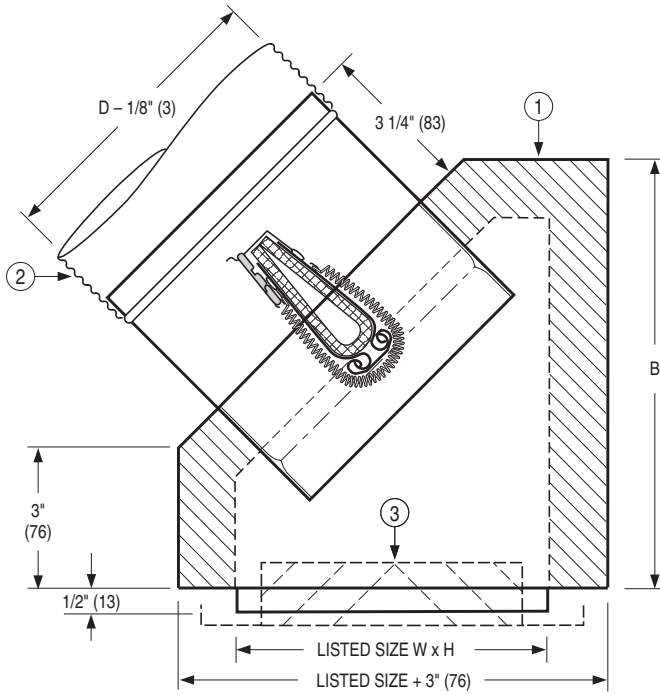


DIMENSIONAL DETAILS:

MODEL: 0763

45° Inlet, Insulated Type F Steel Plenum (by OTHERS)

Top Inlet, Insulated Type G Steel Plenum (by OTHERS)



Plenum Construction	Plenum Type	Description/Installation	Min. Size	Min. Damper Size	Max. Size	Max. Damper Size	Max. Number of Collars
Steel, Insulated	F	45° Inlet	8 x 4 (203 x 102)	4 (102)	14 x 6 (356 x 152)	8 (152) Dia.	1
	G	Top Inlet	8 x 4 (203 x 102)	4 (102)	14 x 8 (356 x 203)	8 (152) Dia.	1

PLENUM CONSTRUCTION DETAILS:

Steel plenum/sub-frame:

- 28 ga. (0.47) minimum galvanized steel, Insulation: Semi rigid Type R-6, 1 1/2" (28) or Type R-8, 2" (51) fiberglass duct liner, minimum density 1.5 pcf.
- UL Classified Class 0 or I Flexible Air Duct connection by others.
- Steel grille/register/diffuser, 26 ga. (0.55) minimum, (by Nailor or others). Bottom of damper sub-frame is flush with ceiling. Standard depth for grille clearance is 2" (51).

NOTES:

- See minimum/maximum damper size restriction by Plenum Construction/Plenum Type, above.
- Refer to document IOM-CRD0763NST for Supplementary Installation Instructions for Field Fabrication of Steel Plenums (by others).

HOW TO SPECIFY

MODELS: 0757 AND 0757D

GRILLE/DIFFUSER MOUNT OR DUCTED ASSEMBLY WITH STEEL OR FIBERGLASS PLENUM

SUGGESTED SPECIFICATION:

Provide and install, as shown on plans and/or schedules, ceiling fire dampers as manufactured by Nailor Industries, Inc., qualified for use in specific wood truss ceiling assemblies with 1 hour fire rating which meet the following criteria: Ceiling Fire Dampers shall be tested and manufactured in accordance with UL 555C Standard for Ceiling Dampers and UL 263 Standard for Fire Tests of Building Construction and Materials, and shall bear a UL label verifying the same.

Frame and blade shall be constructed of 22 ga. (0.85) galvanized steel. Blade insulation shall be non-asbestos, UL Classified. Each ceiling damper shall be held open with a **(specifier to select)** 212°F (100°C) or 165°F (74°C) UL Listed fusible link. Ceiling damper assembly shall be provided from the factory with a steel sub-frame of minimum 22 ga. (0.85) steel and of length to suit application. Each ceiling damper assembly shall be installed with a **(specifier to select)** UL 181 Class 1 Classified fiberglass plenum (by others) or steel plenum (by others). Round inlets, of size(s) shown on plans, shall be cut by contractor and collars (by others) installed by contractor. Ceiling dampers shall ship with and be installed in accordance to manufacturer's UL approved installation instructions. Information submitted for approval shall include same UL installation instructions.

(Specifier to select) For applications where ductwork terminates at the ceiling, standard of acceptance shall be Nailor Industries Model 0757. For Model 0757 a grille/diffuser of minimum 26 ga. (0.55) steel construction and of model specified shall be provided by Nailor Industries to ensure correct fit.

(Specifier to select) For applications where ductwork is required to continue down past ceiling, standard of acceptance shall be Nailor Industries Model 0757D.

MODEL: 0763

GRILLE/DIFFUSER MOUNT

SUGGESTED SPECIFICATION:

Provide and install, as shown on plans and/or schedules, ceiling fire dampers as manufactured by Nailor Industries, Inc., qualified for use in specific wood truss ceiling assemblies with 1 hour fire rating which meet the following criteria: Ceiling Fire Dampers shall be tested and manufactured in accordance with UL 555C Standard for Ceiling Dampers and UL 263 Standard for Fire Tests of Building Construction and Materials, and shall bear a UL label verifying the same.

Frame and blade shall be constructed of 22 ga. (0.85) galvanized steel. Blade insulation shall be non-asbestos, UL Classified. Each ceiling damper shall be held open with a **(specifier to select)** 212°F (100°C) or 165°F (74°C) UL Listed fusible link. Each ceiling damper assembly shall be installed with an insulated steel register box (by others). Round inlets, of size(s) shown on plans, shall be cut by contractor and collars (by others) installed by contractor. Ceiling dampers shall ship with and be installed in accordance to manufacturer's UL approved installation instructions. Information submitted for approval shall include same UL installation instructions. A grille/diffuser of minimum 26 ga. (0.55) steel construction and of model specified shall be provided by Nailor Industries to ensure correct fit. Standard of acceptance shall be Nailor Industries Model 0763.

HOW TO ORDER

MODELS: 0756, 0756D, 0757, 0757D & 0763

WOOD TRUSS CEILING RADIATION DAMPERS • UL 263

EXAMPLE: 0756 - 12" x 6" - 06 - 212

1. Models

- 0756 Rectangular, Side Inlet, Steel Plenum, Grille Mount
- 0756D Rectangular, Side Inlet, Steel Plenum, Ducted
- 0757 Rectangular, Grille Mount, (Steel or Fiberglass Plenum by others)
- 0757D Rectangular, Ducted, (Steel or Fiberglass Plenum by others)
- 0763 Round, Rectangular, Ducted, (Steel Plenum by others)

2. Ceiling Opening Size

Width x Height (inches [mm's])
or Diameter (Model 0763) (inches [mm's])

3a. Round Connection Collar

- (Models 0756, 0756D only)
- 04 4" (102) Round
 - 05 5" (127) Round
 - 06 6" (152) Round
 - 07 7" (178) Round
 - 08 8" (203) Round
 - 09 9" (229) Round
 - 10 10" (254) Round

3b. Number of Collars

- (Model 0756D only)
- 1 1 Collar
 - 2 2 Collars
 - 3 3 Collars

3c. Plenum Construction

- (Models 0757, 0757D only)
- FBG Fiberglass (by others)
 - STL Steel (by others)

3d. Plenum Type

- Model 0757:
- A 90° Side Inlet
 - C Insulated 90° Side Inlet
 - D Tapered 90° Side Inlet
 - E Tapered Top Inlet
- Model 0757D:
- B 90° Side Inlet
- Model 0763:
- F Insulated 45° Inlet (by others)
(8 x 4 to 14 x 6 Grille
[203 x 102 to 356 x 152 Grille])
 - G Insulated Top Inlet (by others)
(8 x 4 to 14 x 8 Grille
[203 x 102 to 356 x 203 Grille])

4. Fusible Link Temperature

- 212 212°F (100°C) (default)
- 165 165°F (74°C)

5. Support Angles

- (Model 0763 excluded)
- ISA 2 @ 3/4" x 3/4" x 16 ga.
(19 x 19 x 1.6)
 - ISB 2 @ 1 1/2" x 1 1/2" x 22 ga.
(38 x 38 x 0.85)
- (Models 0760 and 0763 only)

6. Damper Styles

- 0716 Two Blade (default)
- 0714 Single Blade
- 0720 Low Profile Curtain

Available Sizes:

Model	Minimum	Maximum
0756	6" x 4" (152 x 102)	16" x 12" (406)
0756D	6" x 4" (152 x 102)	18" x 18" (457 x 457)
0763	4" (102) Dia.	28" x 28" (711 x 711)

NOTES

1. Not all variants and options are available on all models. Refer to individual model for selection availability.

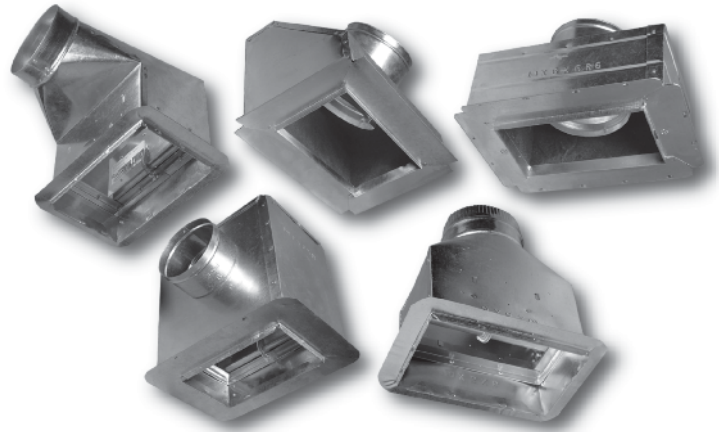
Available Sizes:

Model	Plenum Construction	Plenum Type	Description	Ceiling Opening/Damper	
				Minimum	Maximum
0757	Steel	A	90° Side Inlet	6" x 4" (152 x 102)	16" x 12" (406 x 305)
		C	90° Side Inlet Insulated	8" x 4" (203 x 102)	12" x 12" (305 x 305)
		D	90° Side Inlet Tapered	8" x 4" (203 x 102)	14" x 8" (356 x 203)
		E	Top Inlet Tapered	8" x 4" (203 x 102)	12" x 12" (305 x 305)
0757D	Fiberglass	A	90° Side Inlet	6" x 4" (152 x 102)	21" x 18" (533 x 457)
	Steel	B	90° Side Inlet	6" x 4" (152 x 102)	18" x 18" (457 x 457)
	Fiberglass	B	90° Side Inlet	6" x 4" (152 x 102)	21" x 18" (533 x 457)

- REGISTER BOX
- FOR WOOD TRUSS CEILING ASSEMBLIES
UL DESIGNS L550/L574/L579/L585/M503
& P531/P545/P547/P552

Models:

- 0758 Side Inlet
- 0759 Side Inlet, Insulated
- 0760 45° Inlet, Insulated
- 0761 Top Inlet
- 0762 Top Inlet, Insulated



Models 0758, 0759, 0760, 0761, 0762 (L to R)

Ceiling dampers are designed to function as a heat barrier in air handling openings penetrating fire resistance membrane ceilings. Model 0758, 0759, 0760, 0761, 0762 register boxes with integral ceiling dampers have specially designed and tested to provide protection and simple installation in specific UL design wood truss ceiling assemblies. The 0758 and 0759 design features a single blade damper out of the airstream to reduce pressure drop and noise generation, therefore maximizing performance. The 0760, 0761, 0762 design features a square or rectangular two blade damper. All models are designed to accommodate standard size common residential registers.

QUALIFICATIONS:

- UL 263 CLASSIFIED CEILING RADIATION DAMPER. Category CABS. (File # R9660).
- 1 hour rated for use in UL floor/ceiling design numbers L550/L574/L579/L585/M503 and roof/ceiling design numbers P531/P545/P547/P552.
- Meets NFPA 90A requirements.

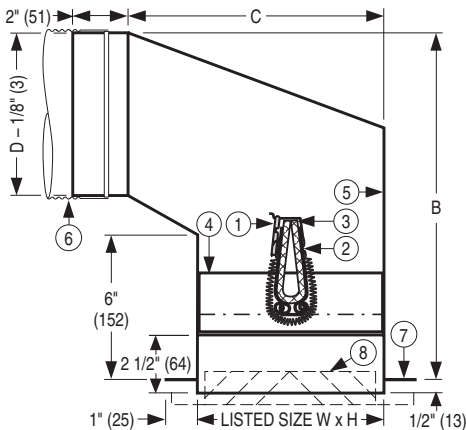
MODEL: 0758 SIDE INLET

STANDARD CONSTRUCTION:

- Fusible Link:** UL Listed, 212°F (100°C), standard.
- Blades:** 22 ga. (0.85) roll-formed galv. steel.
- Blade Insulation:** Non-asbestos UL Classified.
- Damper Frame:** 22 ga. (0.85) galvanized steel.
- Plenum:** Steel plenum: 26 ga. (0.55) min. with round connection collar.
- Duct:** UL Classified Class 0 or 1 flexible air duct connection by others.
- Flange:** Plaster flange.
- Steel Grille/ Register:** By Nailor or others. Standard depth for grille clearance is 2 1/2" (64).

COMMON OPTIONS:

- 165°F (74°C) UL Listed fusible link.
- Installation Support Angles. 26" (660) long:
ISA 2 @ 3/4" x 3/4" x 16 ga. (19 x 19 x 1.6).
ISB 2 @ 1 1/2" x 1 1/2" x 22 ga. (38 x 38 x 0.85).



Model 0758 Sizes/Dimensional Data (W x H):

Available Sizes		B	C
W x H	Nominal Duct Size D		
8" x 4" (203 x 102)	4" (102) dia.	11 1/2" (292)	8" (203)
	5" (127) dia.	11" (279)	8" (203)
10" x 4" (254 x 102)	4" (102) dia.	11 1/2" (292)	8" (203)
	5" (127) dia.	11 1/2" (292)	7 3/4" (197)
	6" (152) dia.	11 1/2" (292)	7 1/4" (184)
12" x 4" (305 x 102)	6" (152) dia.	12 1/2" (318)	7 3/4" (197)
	7" (178) dia.	12" (305)	7 1/2" (191)
	8" (203) dia.	13 1/2" (343)	7" (178)
14" x 4" (356 x 102)	7" (178) dia.	13" (330)	7 1/2" (191)
6" x 6" (152 x 152)	4" (102) dia.	11" (279)	8" (203)
	5" (127) dia.	11" (279)	8" (203)
8" x 6" (203 x 152)	6" (152) dia.	12" (305)	10" (254)
	7" (178) dia.	12" (305)	9" (229)
10" x 6" (254 x 152)	6" (152) dia.	12" (305)	10" (254)
	7" (178) dia.	13" (330)	9 1/4" (235)
	8" (203) dia.	13" (330)	9" (229)
12" x 6" (305 x 152)	7" (178) dia.	13 1/2" (343)	9 1/4" (235)
	8" (203) dia.	14" (356)	10 1/4" (260)
	9" (229) dia.	14 1/2" (368)	11" (279)
	10" (254) dia.	14 1/2" (368)	10" (254)
14" x 6" (356 x 152)	6" (152) dia.	12 1/2" (318)	10" (254)
	7" (178) dia.	13 1/2" (343)	9 1/4" (235)
	8" (203) dia.	14 1/2" (368)	9 3/4" (248)
	9" (229) dia.	14 1/2" (368)	10" (254)
	10" (254) dia.	14 1/2" (368)	10 1/4" (260)
8" x 8" (203 x 203)	5" (127) dia.	12" (305)	10" (254)
	6" (152) dia.	12" (305)	10" (254)
10" x 8" (254 x 203)	7" (178) dia.	13 1/2" (343)	9 3/4" (248)
	8" (203) dia.	14" (356)	10 1/4" (260)
12" x 8" (305 x 203)	7" (178) dia.	13 1/2" (343)	9 3/4" (248)
	8" (203) dia.	14" (356)	10 1/4" (260)
14" x 8" (356 x 203)	6" (152) dia.	13" (330)	12" (305)
	7" (178) dia.	14" (356)	12" (305)
	8" (203) dia.	15" (381)	12" (305)
	9" (229) dia.	16" (406)	13" (330)
	10" (254) dia.	17" (432)	13" (330)

W x H = Nominal Grille/Register Size

MODEL: 0759 SIDE INLET, INSULATED PLENUM

STANDARD CONSTRUCTION:

1. **Fusible Link:** UL Listed, 212°F (100°C), standard.
2. **Blades:** 22 ga. (0.85) roll-formed galv. steel.
3. **Blade Insulation:** Non-asbestos UL Classified.
4. **Damper Frame:** 22 ga. (0.85) galvanized steel.
5. **Internal Insulation:** 1 1/2" (38) R-6.3 value.
6. **Plenum:** Steel plenum: 28 ga. (0.47) min. with round connection collar.
7. **Duct:** UL Classified Class 0 or 1 flexible air duct connection by others.
8. **Flange:** Plaster flange.
9. **Steel Grille/Register:** By Nailor or others. Standard depth for grille clearance is 2 1/2" (64).

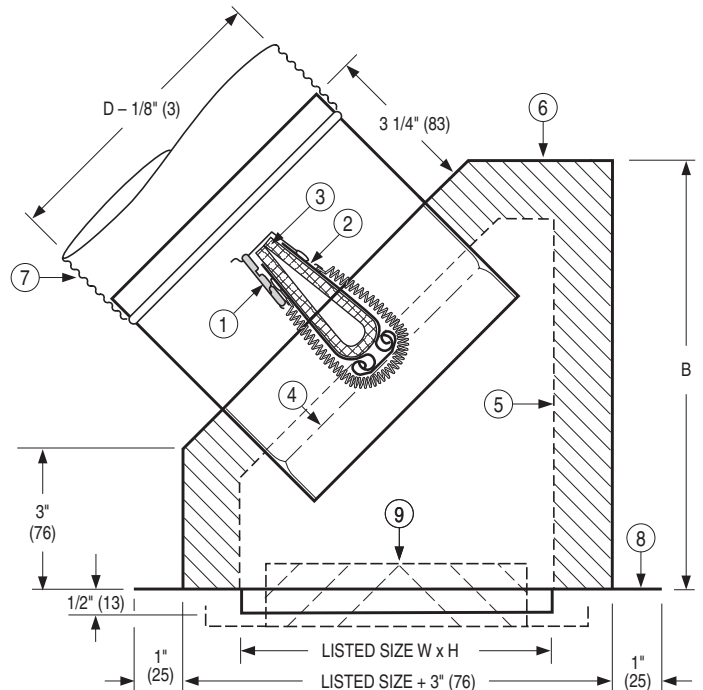
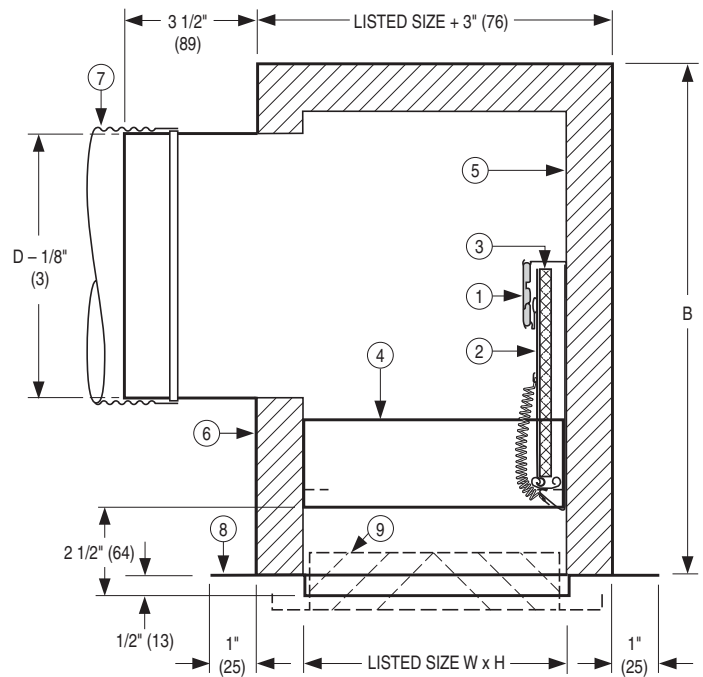
COMMON OPTIONS:

- 165°F (74°C) UL Listed fusible link.
- Installation Support Angles. 26" (660) long:
ISA 2 @ 3/4" x 3/4" x 16 ga. (19 x 19 x 1.6).
ISB 2 @ 1 1/2" x 1 1/2" x 22 ga. (38 x 38 x 0.85).

Dimensional Data (W x H):

Available Sizes		B
W x H	Nominal Duct Size D	
8" x 4" (203 x 102)	4", 5" (102, 127) dia.	12" (305)
10" x 4" (254 x 102)	4", 5", 6" (102, 127, 152) dia.	
12" x 4" (305 x 102)	6", 7", 8" (152, 178, 203) dia.	
8" x 6" (203 x 152)	6" (152) dia.	
10" x 6" (254 x 152)	5", 6", 7" (127, 152, 178) dia.	
12" x 6" (305 x 152)	6", 7", 8", 9" (152, 178, 203, 229) dia.	12" (305)
8" x 8" (203 x 203)	5", 6" (127, 152) dia.	
10" x 8" (254 x 203)	7", 8" (178, 203) dia.	
12" x 8" (305 x 203)	7", 8" (178, 203) dia.	
10" x 10" (254 x 254)	7", 8" (178, 203) dia.	
12" x 12" (305 x 305)	8" (203) dia.	12" (305)
	9", 10" (229, 254) dia.	14" (356)

W x H = Nominal Grille/Register Size



MODEL: 0760 45° INLET, INSULATED PLENUM

STANDARD CONSTRUCTION:

1. **Fusible Link:** UL Listed, 212°F (100°C), standard.
2. **Blades:** 22 ga. (0.85) roll-formed galv. steel.
3. **Blade Insulation:** Non-asbestos UL Classified.
4. **Damper Frame:** 22 ga. (0.85) galvanized steel.
5. **Internal Insulation:** 1 1/2" (38) R-6.3 value.
6. **Plenum:** Steel plenum: 28 ga. (0.47) min. with round connection collar.
7. **Duct:** UL Classified Class 0 or 1 flexible air duct connection by others.
8. **Flange:** Plaster flange.
9. **Steel Grille/Register:** By Nailor or others. Standard depth for grille clearance is 2" (51).

COMMON OPTIONS:

- 165°F (74°C) UL Listed fusible link.
- Installation Support Angles. 26" (660) long:
ISA 2 @ 3/4" x 3/4" x 16 ga. (19 x 19 x 1.6).
ISB 2 @ 1 1/2" x 1 1/2" x 22 ga. (38 x 38 x 0.85).
- Installation Boot Rails. 26" (660) long:
ISR 2 @ 1" x 24 ga. (25 x 0.70).

Dimensional Data (W x H):

Available Sizes		B
W x H	Nominal Duct Size D	
8" x 4" (203 x 102)	4", 5" (102, 127) dia.	9 3/4" (248)
10" x 4" (254 x 102)	4", 5", 6" (102, 127, 152) dia.	11 1/2" (292)
	6" (152) dia.	13" (330)
	7" (178) dia.	14" (356)
12" x 4" (305 x 102)	8" (203) dia.	15" (381)
	7" (178) dia.	15" (381)
8" x 6" (203 x 152)	6" (152) dia.	9 1/4" (235)
10" x 6" (254 x 152)	5", 6", 7" (127, 152, 178) dia.	9 1/4" (235)
12" x 6" (305 x 152)	6", 7" (152, 178) dia.	10" (254)
14" x 6" (356 x 152)	6", 7", 8" (152, 178, 203) dia.	12" (305)

W x H = Nominal Grille/Register Size

MODEL: 0761 TOP INLET

STANDARD CONSTRUCTION:

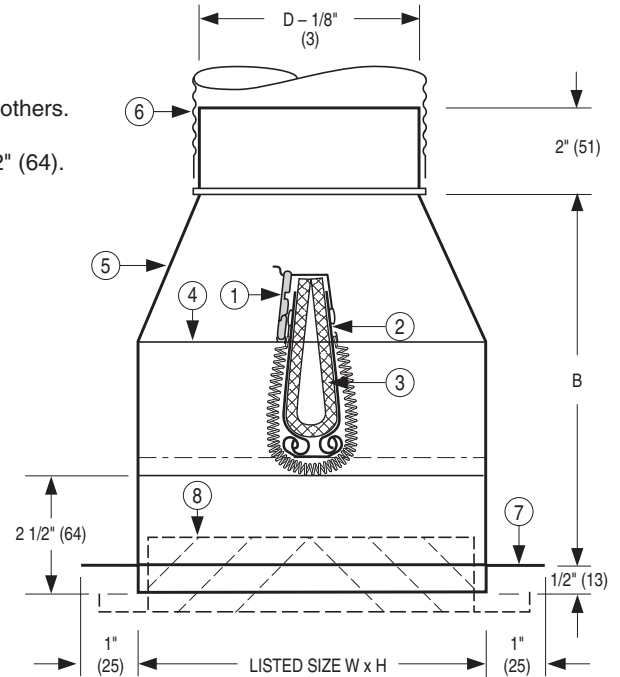
1. **Fusible Link:** UL Listed, 212°F (100°C), standard.
2. **Blades:** 22 ga. (0.85) roll-formed galv. steel.
3. **Blade Insulation:** Non-asbestos UL Classified.
4. **Damper Frame:** 22 ga. (0.85) galvanized steel.
5. **Plenum:** Steel, 26 ga. (0.55) min. with round connection collar.
6. **Duct:** UL Classified Class 0 or 1 flexible air duct connection by others.
7. **Flange:** Plaster flange.
8. **Steel Grille/ Register:** By Nailor or others. Std. depth for grille clearance is 2 1/2" (64).

COMMON OPTIONS:

- 165°F (74°C) UL Listed fusible link.
- Installation Support Angles. 26" (660) long:
ISA 2 @ 3/4" x 3/4" x 16 ga. (19 x 19 x 1.6).
ISB 2 @ 1 1/2" x 1 1/2" x 22 ga. (38 x 38 x 0.85).

Dimensional Data (W x H):

Available Sizes		B
W x H	Nominal Duct Size D	
8" x 4" (203 x 102)	4", 5" (102, 127) dia.	10" (254)
10" x 4" (254 x 102)	4", 5", 6" (102, 127, 152) dia.	
12" x 4" (305 x 102)	6", 7", 8" (152, 178, 203) dia.	
8" x 6" (203 x 152)	6" (152) dia.	
10" x 6" (254 x 152)	5", 6", 7" (127, 152, 178) dia.	
12" x 6" (305 x 152)	6", 7", 8", 9" (152, 178, 203, 229) dia.	
8" x 8" (203 x 203)	5", 6" (127, 152) dia.	
10" x 8" (254 x 203)	7", 8" (178, 203) dia.	
12" x 8" (305 x 203)	7", 8" (178, 203) dia.	
9" x 9" (229 x 229)	8" (203) dia.	
12" x 12" (305 x 305)	8", 9", 10" (203, 229, 254) dia.	



W x H = Nominal Grille/Register Size

MODEL: 0762 TOP INLET, INSULATED PLENUM

STANDARD CONSTRUCTION:

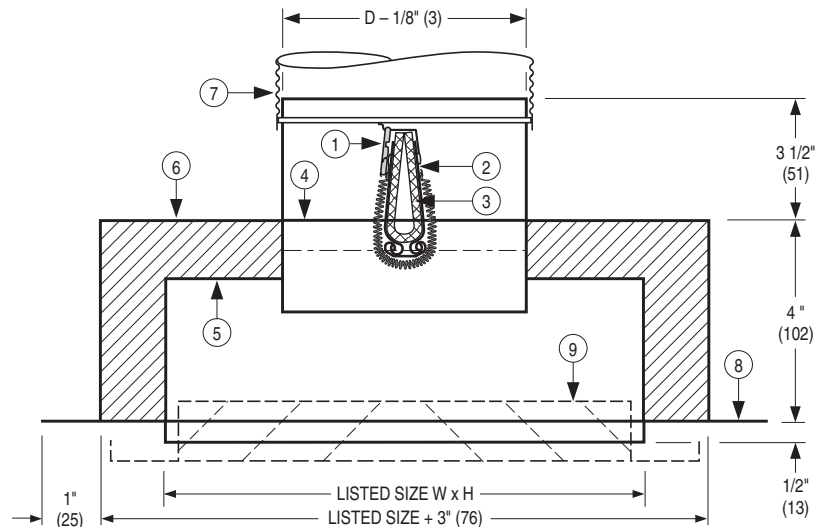
1. **Fusible Link:** UL Listed, 212°F (100°C), standard.
2. **Blades:** 22 ga. (0.85) roll-formed galv. steel.
3. **Blade Insulation:** Non-asbestos UL Classified.
4. **Damper Frame:** 22 ga. (0.85) galvanized steel.
5. **Internal Insulation:** 1 1/2" (38) R-6.3 value.
6. **Plenum:** Steel, 28 ga. (0.47) min. with round connection collar.
7. **Duct:** UL Classified Class 0 or 1 flexible air duct connection by others.
8. **Flange:** Plaster flange.
9. **Steel Grille/Reg.:** By Nailor or others. Min. depth for grille clearance is 2" (51).

COMMON OPTIONS:

- 165°F (74°C) UL Listed fusible link.
- Installation Support Angles. 26" (660) long:
ISA 2 @ 3/4" x 3/4" x 16 ga. (19 x 19 x 1.6).
ISB 2 @ 1 1/2" x 1 1/2" x 22 ga. (38 x 38 x 0.85).
- Installation Boot Rails. 26" (660) long:
ISR 2 @ 1" x 24 ga. (25 x 0.70).

Dimensional Data (W x H):

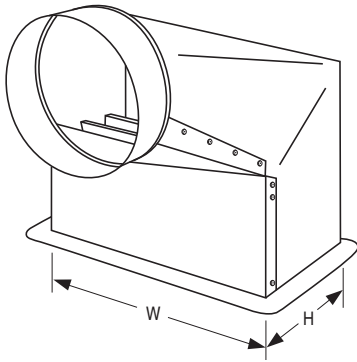
Available Sizes	
W x H	Nominal Duct Size D
8" x 4" (203 x 102)	4", 5" (102, 127) dia.
10" x 4" (254 x 102)	4", 5", 6" (102, 127, 152) dia.
12" x 4" (305 x 102)	6", 7", 8" (152, 178, 203) dia.
8" x 6" (203 x 152)	6" (152) dia.
10" x 6" (254 x 152)	5", 6", 7" (127, 152, 178) dia.
12" x 6" (305 x 152)	6", 7", 8" (152, 178, 203) dia.
14" x 6" (356 x 152)	6", 7", 8" (152, 178, 203) dia.
8" x 8" (203 x 203)	5", 6" (127, 152) dia.
10" x 8" (254 x 203)	7", 8" (178, 203) dia.
12" x 8" (305 x 203)	7", 8" (178, 203) dia.
14" x 8" (356 x 203)	6", 7", 8" (152, 178, 203) dia.



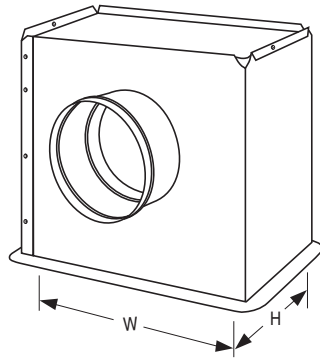
W x H = Nominal Grille/Register Size

DIMENSIONAL DETAILS:

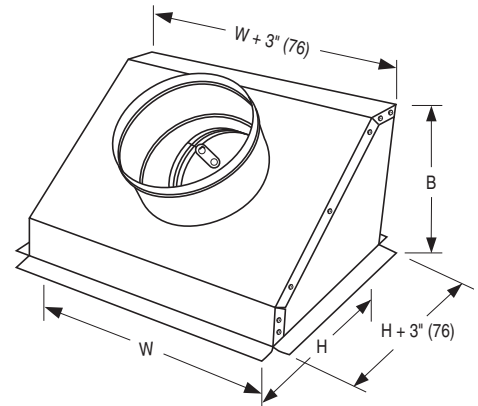
MODELS: 0758, 0759, 0760, 0761, 0762



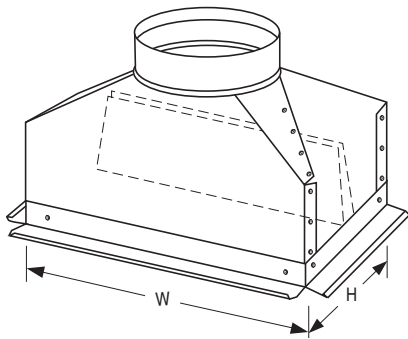
Model 0758



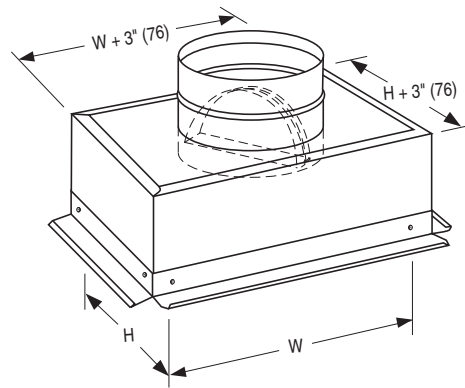
Model 0759



Model 0760



Model 0761



Model 0762

HOW TO ORDER

MODELS: 0758 TO 0762

WOOD TRUSS CEILING RADIATION DAMPERS REGISTER BOXES

EXAMPLE: 0758 - 14" x 6" - 06 - 212 - ISA

1. Models

- 0758 Register Box, Tapered 90° Side Inlet
- 0759 Register Box, 90° Side Inlet, Insulated
- 0760 Register Box, 45° Side Inlet, Insulated
- 0761 Register Box, Tapered Top Inlet
- 0762 Register Box, Top Inlet, Insulated

2. Register Size

Width x Height (inches [mm's])

- 0606 6" x 6" (152 x 152)
- 0808 8" x 8" (203 x 203)
- 1004 10" x 4" (254 x 102)
- 1006 10" x 6" (254 x 152)
- 1008 10" x 8" (254 x 203)
- 1204 12" x 4" (305 x 102)
- 1208 12" x 8" (305 x 203)
- 1404 14" x 4" (356 x 102)
- 1406 14" x 6" (356 x 152)
- 1408 14" x 8" (356 x 203)

3. Inlet Size

Diameter (inches [mm's])

- 05 5" (127) Round
- 06 6" (152) Round
- 07 7" (178) Round
- 08 8" (203) Round
- 09 9" (229) Round
- 10 10" (254) Round

4. Fusible Link Temperature

- 212 212°F (100°C) (default)
- 165 165°F (74°C)

5. Installation Accessory

ISA Support Angles

- 2 @ 26" x 3/4" x 3/4" x 16 ga.
(660 x 19 x 19 x 1.6)

ISB Support Angles

- 2 @ 26" x 1 1/2" x 1 1/2" x 22 ga.
(660 x 38 x 38 x 0.85)

(Models 0760 and 0763 only)

IBR Boot Rails

- 2 @ 26" x 1" x 24 ga. (660 x 25 x ?)

Available Sizes:

Nominal Register Size W x H	Round Inlet (Duct) Size	Model				
		0758	0759	0760	0761	0762
8" x 4" (203 x 102)	4", 5" (102, 127)	√	√	√	√	√
10" x 4" (254 x 102)	4", 5", 6" (102, 127, 152)	√	√	√	√	√
12" x 4" (305 x 102)	6", 7", 8" (152, 178, 203)	√	√	√	√	√
14" x 4" (356 x 102)	7" (178)	√	—	√	—	—
6" x 6" (152 x 152)	4", 5" (102, 127)	√	—	—	—	—
8" x 6" (203 x 152)	6" (152)	√	√	√	√	√
10" x 6" (254 x 152)	5", 6", 7" (127, 152, 178)	√	√	√	√	√
12" x 6" (305 x 152)	6", 7" (152, 178)	√	√	√	√	√
	8", 9" (203, 229)	√	√	—	√	√
14" x 6" (356 x 152)	6", 7", 8" (152, 178, 203)	√	—	√	—	√
	9" (229)	√	—	—	—	√
	10" (254)	√	—	—	—	—
8" x 8" (203 x 203)	5", 6" (127, 152)	√	√	—	√	√
10" x 8" (254 x 203)	7", 8" (178, 203)	√	√	—	√	√
12" x 8" (305 x 203)	7", 8" (178, 203)	√	√	—	√	√
14" x 8" (356 x 203)	6", 7", 8", 9", 10" (152, 178, 203, 229, 254)	√	—	—	—	√
9" x 9" (229 x 229)	8" (203)	—	—	—	√	—
10" x 10" (254 x 254)	7", 8" (178, 203)	—	√	—	—	—
12" x 12" (305 x 305)	8", 9", 10" (203, 229, 254)	—	√	—	√	—