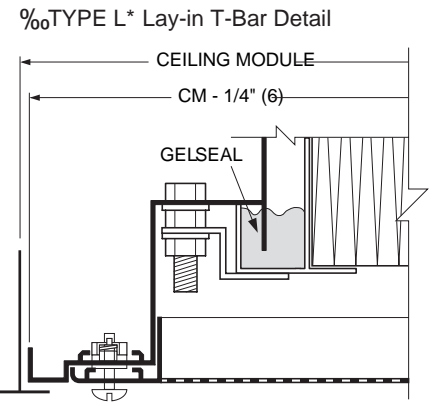
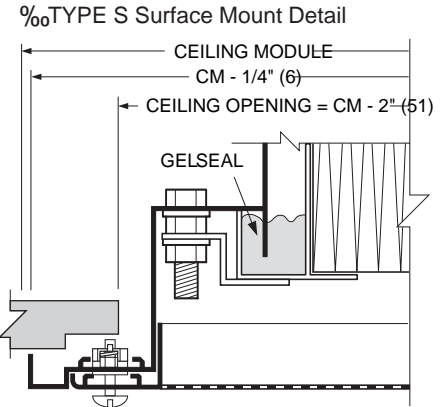
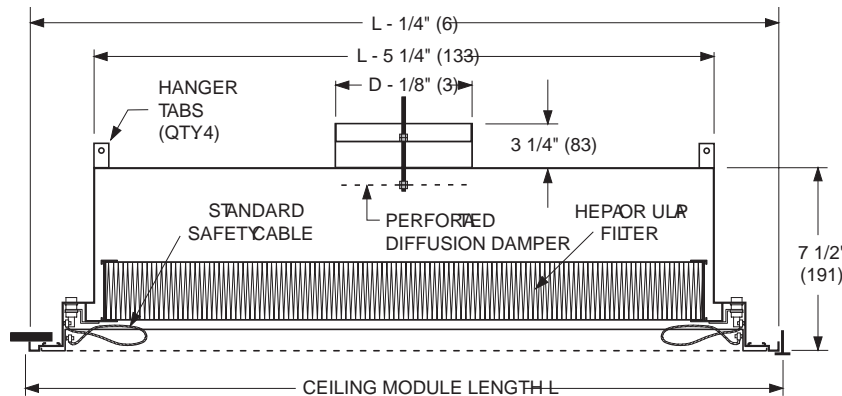
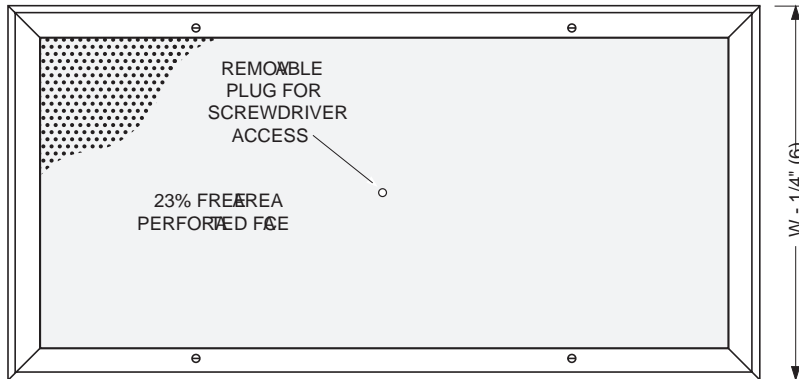




LAMINAR FLOW CEILING DIFFUSER WITH FILTER RACK
 ALUMINUM • MEDIUM CAPACITY DESIGN • HEPA OR
 ULPA FILTER
 MODEL: 92LFDMF-AL



*Compatible with 15/16" (24) or 1" (25) T-Bar only.

Ceiling Module Sizes L x W & Nominal Round Duct Sizes D

L x W	Imperial Modules (inches)	24 x 24	36 x 24	48 x 24	60 x 24
	Metric Modules (mm)	600 x 600	900 x 600	1200 x 600	1500 x 600
Duct Size D	(inches)	8, 10, 12	10, 12, 14	10, 12, 14	12, 14, 16
	(mm)	203, 254, 305	254, 305, 356	254, 305, 356	305, 356, 406

CLEANROOM APPLICATIONS:
 For DOP/PAO Scan tested model, cable operated damper and other options, see Model 92LFDMF-SS.

DESCRIPTION:

The Model 92LFDMF-AL Laminar Flow Diffuser is a medium capacity/airflow range design that produces a non-aspirating, low velocity vertical air pattern. Recommended face velocity is 50 – 90 cfm/sq. ft. Incorporating an extended plenum and a unique frame they are designed to accommodate a Gel Seal HEPA or ULPA filter. The filters can be easily removed and replaced from the face of the unit. Located above the work area, they provide a controlled low velocity downward projection "piston" of conditioned supply air. The installed HEPA or ULPA filter together with the diffusion damper equalizes air distribution across the perforated face resulting in excellent performance. The only significant amount of room entrainment occurs at the outer boundary of the laminar flow mass. Applications include non-critical research laboratories, animal labs, food processing and computer rooms where localized heavy cooling loads present a problem.

CONSTRUCTION:

1. Extruded aluminum frame and aluminum perforated face with 3/32" (2.4) dia. holes on 60 degree 3/16" (5) staggered centers (23% free area). The face plate is removable for cleaning and is secured by 1/4 turn fasteners.
2. Aluminum backpan and perforated disc type damper. Damper adjustment through removable face plug.
3. Standard safety cables prevent accidental dropping of removable face.
4. HEPA Filter: Clear anodized extruded aluminum filter frame with port for damper adjustment.
5. Standard finish is AW Appliance White.

OPTIONS:

- %JL ULPA Filter (99.9995% on 0.12 µm).
- %FBO Filter by others.
- %EX External foil-back insulation (installed) – R-4.2.
- Finish:
- %SP Special _____ .

SCHEDULE TYPE:	Dimensions are in inches (mm).			
PROJECT:				
ENGINEER:	DATE	B SERIES	SUPERSEDES	DRAWING NO.
CONTRACTOR:	7 - 11 - 19	9200	11 - 2 - 15	92LFDMF-AL