



**FAN POWERED CHILLED WATER TERMINAL UNIT**  
**SENSIBLE COOLING (DOAS)**  
**CONSTANT OR VARIABLE VOLUME**  
**MODELS: 33SZ, 33SZE AND 33SZW**  
**UNIT SIZES: 10 AND 30 (LOW PROFILE)**

**DESCRIPTION:**

- Sensible cooling coil on the induced air inlet handles zone sensible load. Opposite side to controls location. Aluminum ripple fins (10 FPI) and 1/2" (13) copper tubes. Hand of coil connection is determined looking in direction of airflow (RH shown).
- 20 ga. (1.00) galvanized steel construction.
- 16 ga. (1.61) galvanized steel inclined opposed blade damper. 45° rotation. CW to close.
- Ultra-high efficiency ECM fan motor. EPIC fan volume controller.
- 1/2" (13) dual density fiberglass installation, exposed edge coated to prevent air erosion. Meets requirements of NFPA 90A and UL 181.
- Access panels top and bottom.
- Multi-point averaging diamond flow sensor.
- Discharge opening designed for flanged duct connection.
- Single point electrical connection.
- Low voltage NEMA 1 type enclosure for factory mounted DDC controls.
- Controls mounted as standard on RH side as shown. Unit size 30 ordered with LH controls (optional) is inverted and discharge duct hanging elevation will therefore change.
- Galvanized steel drip pan integral to sensible coil.

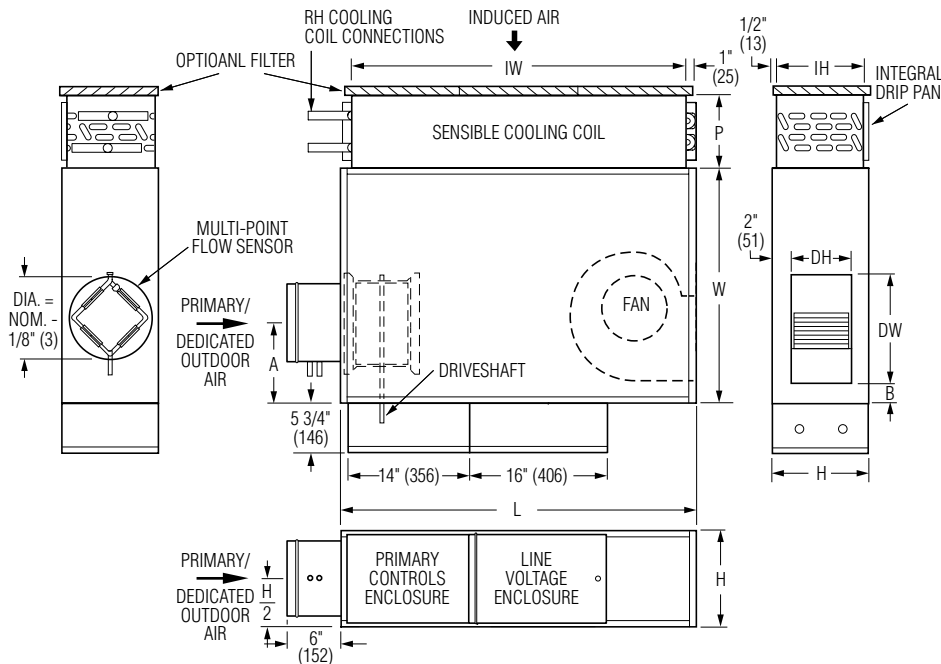
**OPTIONS:**

- CW Coil:
- 2-Row  4-Row
  - 6-Row  8-Row
  - Condensate Sensor.
- Coil Connections:
- Right Hand (Default).
  - Left Hand.
- Liner:
- Fiber-free liner.
  - Perforated metal liner.
  - Solid metal liner.
  - Steri-liner.
  - Steri-liner w/perforated liner.

**Filter:**

- 1" (25) Throwaway.
- 2" (51) Pleated MERV 8.
- 2" (51) Pleated MERV 13.
- Ducted Return Filter Rack (See submittal 33SZ-FR).

**Model 33SZ • Basic Unit**



**Dimensional Data**

Unit Size	Inlet Size	W	H	L	A	B	Cooling Coil IW x IH	P	Outlet Discharge DW x DH	Filter Size
10	4, 5, 6 (102, 127, 152)	26 1/2 (673)	8 1/2 (216)	47 1/4 (1200)	5 1/8 (130)	2 (51)	43 x 7 1/2 (1092 x 191)	2 Row: 5 1/8 (130)	7 1/8 x 4 3/4 (181 x 121)	45 x 8 1/2 (1143 x 216)
			11	40 1/4 (1022)	8 (203)	2 (51)		4 Row: 7 5/16 (186)		
								6 Row: 9 1/2 (241)		
30	4, 5, 6, 8 (102, 127, 152, 203)	26 1/2 (673)	11 (279)	40 1/4 (1022)	8 (203)	2 (51)	36 x 8 3/4 (914 x 222)	8 Row: 11 11/16 (297)	12 3/8 x 6 7/8 (314 x 175)	38 x 10 (965 x 254)

**Electrical Data**

Unit Size	EPIC ECM Motor FLA				
	Motor HP	120V	208V	240V	277V
10	*	2.2	1.6	1.5	1.5
30	*	7.5	5.0	5.0	4.9

**CW Coil O.D. Sweat Connections**

Unit Size	No. of Row
10, 30	2, 4, 6 & 8
	7/8" (22)

\* The EPIC ECM is a variable horsepower motor. Refer to Selectworks schedule for actual power consumption. FLA = Full load amperage. All motors are single phase/60 Hz.

**Electrical:**

- LH Controls enclosure
- Toggle disconnect switch.
- FN2 – 90° line voltage enclosure.
- FN3 – Remote line voltage enclosure.
- Motor fusing.

**Others:**

- Hanger brackets.
- 1/4-turn fasteners (access panel).
- Special Features.
- Induced Air Silencer (See submittal 33SZ-DSI).
- Special Features: \_\_\_\_\_



Seismic Certification (Size 30):  
 SSI (Standard)  
 OSHPD

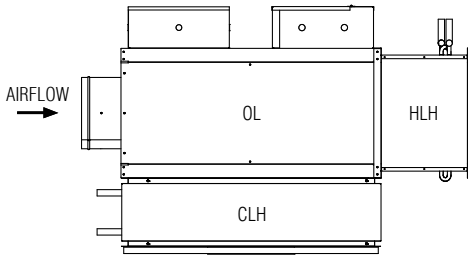
For heat options; see page 2.  
 Dimensions are in inches (mm).

<b>SCHEDULE TYPE:</b>		<b>DATE</b>	<b>B SERIES</b>	<b>SUPERSEDES</b>	<b>DRAWING NO.</b>
<b>PROJECT:</b>		7 - 20 - 21	3300	3 - 11 - 21	33SZ-1
<b>ENGINEER:</b>					
<b>CONTRACTOR:</b>					

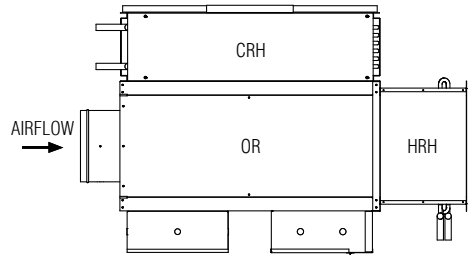




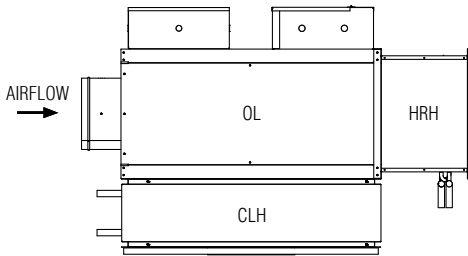
**FAN POWERED CHILLED WATER TERMINAL UNITS  
ORIENTATIONS  
MODELS: 33SZE AND 33SZW  
UNIT SIZES: 10 AND 30 (LOW PROFILE)**



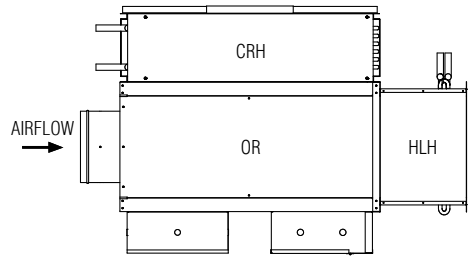
**OL** LEFT HAND CONTROLS  
**CLH** LEFT HAND COOLING COIL CONNECTIONS  
**HLH** LEFT HAND HEATING COIL CONNECTIONS



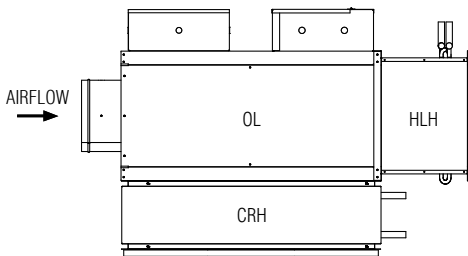
**OR** RIGHT HAND CONTROLS  
**CRH** RIGHT HAND COOLING COIL CONNECTIONS  
**HRH** RIGHT HAND HEATING COIL CONNECTIONS



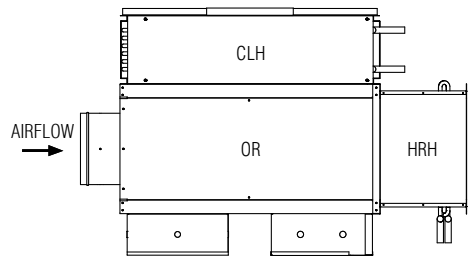
**OL** LEFT HAND CONTROLS  
**CLH** LEFT HAND COOLING COIL CONNECTIONS  
**HRH** RIGHT HAND HEATING COIL CONNECTIONS



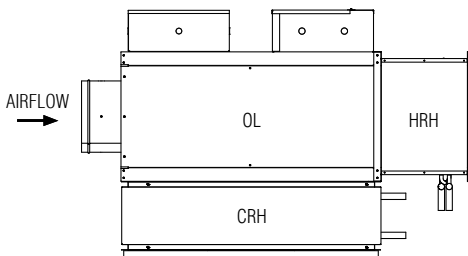
**OR** RIGHT HAND CONTROLS  
**CRH** RIGHT HAND COOLING COIL CONNECTIONS  
**HLH** LEFT HAND HEATING COIL CONNECTIONS



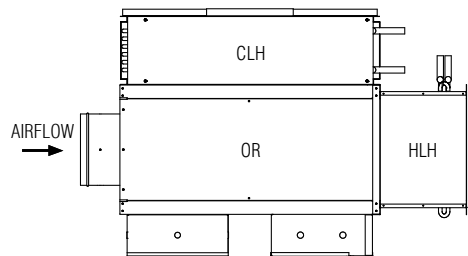
**OL** LEFT HAND CONTROLS  
**CRH** RIGHT HAND COOLING COIL CONNECTIONS  
**HLH** LEFT HAND HEATING COIL CONNECTIONS



**OR** RIGHT HAND CONTROLS  
**CLH** LEFT HAND COOLING COIL CONNECTIONS  
**HRH** RIGHT HAND HEATING COIL CONNECTIONS



**OL** LEFT HAND CONTROLS  
**CRH** RIGHT HAND COOLING COIL CONNECTIONS  
**HRH** RIGHT HAND HEATING COIL CONNECTIONS



**OR** RIGHT HAND CONTROLS  
**CLH** LEFT HAND COOLING COIL CONNECTIONS  
**HLH** LEFT HAND HEATING COIL CONNECTIONS

**SCHEDULE TYPE:**

**PROJECT:**

**ENGINEER:**

**CONTRACTOR:**

Page 3 of 3.

Dimensions are in inches (mm)

**DATE**

**B SERIES**

**SUPERSEDES**

**DRAWING NO.**

7 - 20 - 21

3300

3 - 11 - 21

33SZ-1